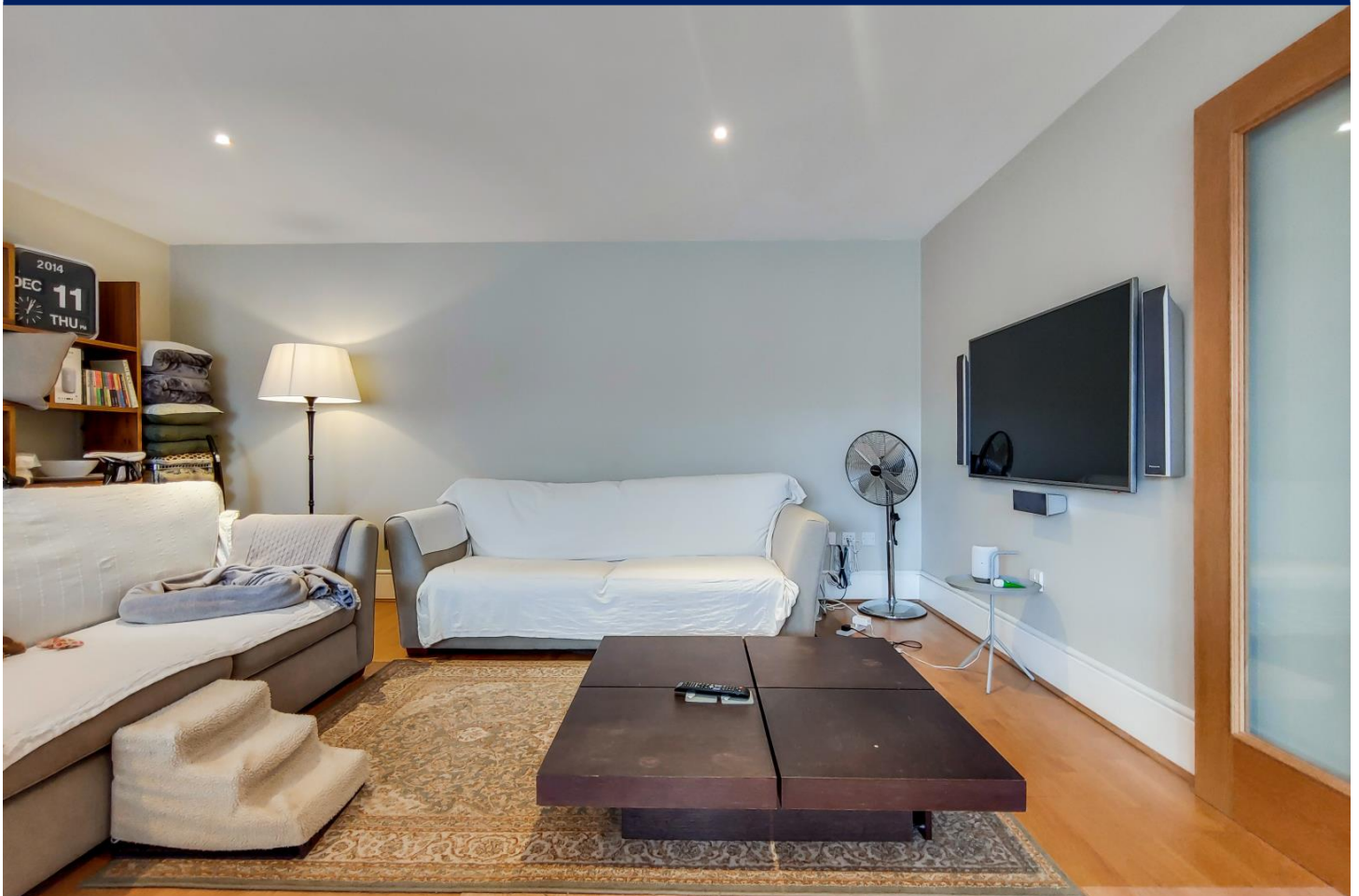




25 Brewhouse Lane | SW15 2JX

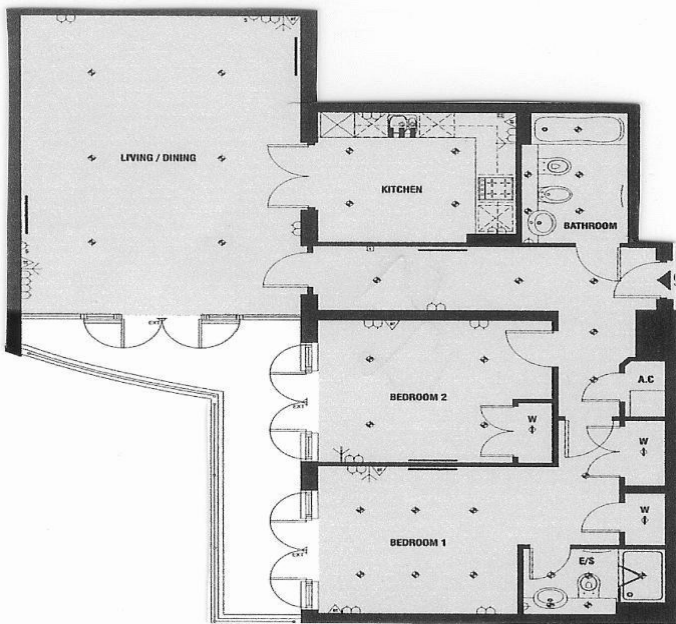
PCM: Monthly Rental Of £2,850



- **Two Double Bedrooms**
- **24-hour Concierge**
- **Riverside Development**
- **Stylish Furnishings**
- **Balcony**
- **Wandsworth Council Tax**

Description:

A stunning two-bedroom apartment in the highly sought-after Putney Wharf development on the banks of the River Thames. This second-floor apartment is larger than average and benefits from two double bedrooms, two bathrooms and a balcony; it has also been furnished to a high standard. This property is conveniently located close to Putney High Street with excellent transport facilities. Further benefits include: 24-hour concierge, residents gym and secure underground parking.



Energy Efficiency Rating

	Current	Potential
<i>Very energy efficient - lower running costs</i>		
(92 plus) A		
(81-91) B		
(69-80) C		
(55-68) D	67	79
(39-54) E		
(21-38) F		
(1-20) G		
<i>Not energy efficient - higher running costs</i>		
England & Wales	EU Directive 2002/91/EC	

Chartwell
RESIDENTIAL

| 020 8780 6790 |
www.chartwelluk.com
info@chartwelluk.com

25 Brewhouse Lane | SW15 2JX

PCM: Monthly Rental Of £2,850

MONEY LAUNDERING REGULATIONS 2003

intending purchasers will be asked to produce identification and proof of financial status when an offer is received. We would ask for your co-operation in order that there will be no delay in agreeing the sale.