



£1,550 PCM *Unfurnished*

**** AVAILABLE NOW - UNFURNISHED ****

A spacious three/ four bedroom town house with garage and driveway parking, situated just a short walk of Aylesbury town centre and train station. The accommodation comprises; entrance hall, guest cloakroom, kitchen/ dining room with door leading to an enclosed rear garden, bay fronted living room, four bedrooms and two family bathrooms. The property also benefits from; garage, driveway parking, gas central heating and UPVC double glazing.

HOLDING FEE: £392.30

DEPOSIT REQUIRED: £1961.53

TENANCY LENGTH: 12 MONTHS

- AVAILABLE NOW
- BAY FRONTED LOUNGE
- TWO BATHROOMS
- ENCLOSED REAR GARDEN
- UNFURNISHED
- KITCHEN/DINING ROOM
- FOUR BEDROOMS
- GUEST CLOAKROOM
- QUIET CUL DE SAC
- GARAGE AND DRIVEWAY



9 Croft Road, Aylesbury, Buckinghamshire, HP21 7RD

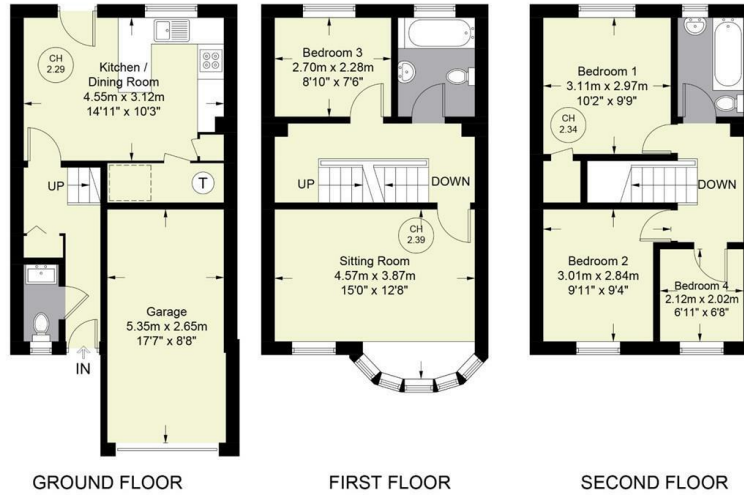
Estate Agents ~ Lettings Agents ~ Valuers ~ Independent Mortgage Advisors

Croft Road

Approximate Gross Internal Area
 Ground Floor = 268 sq ft / 24.9 sq m
 First Floor = 379 sq ft / 35.2 sq m
 Second Floor = 359 sq ft / 33.4 sq m
 Garage = 152 sq ft / 14.1 sq m
 Total = 1158 sq ft / 107.6 sq m



CH 2.29 = Ceiling Height [Dashed Box] = Reduced headroom below 1.5m / 5'0"



Floor Plan produced for Hursts by Media Arcade ©.
 Illustration for identification purposes only. Window and door openings are approximate. Whilst every attempt is made to assure accuracy in the preparation of this plan, please check all dimensions, shapes and compass bearings before making any decisions reliant upon them.

