



PCM

£1,400

****AVAILABLE EARLY JANUARY****

This stunning two bedroom first floor apartment is located just a short walk of High Wycombe's town centre and railways station. The accommodation comprises; entrance hall, large lounge/dining room/modern fitted kitchen, master bedroom with en-suite and balcony, second double bedroom, contemporary bathroom. The property further benefits from; UPVC double glazing, gas central heating, balcony, allocated parking.

HOLDING FEE: £323.08

DEPOSIT REQUIRED: £1615.38

LENGTH OF TENANCY: 12 MONTHS MINIMUM

- AVAILABLE EARLY JANUARY
- MASTER WITH EN-SUITE
- FITTED KITCHEN
- ALLOCATED PARKING
- GAS CENTRAL HEATING
- TWO DOUBLE BEDROOMS
- MODERN THROUGHOUT
- BALCONY
- UPVC DOUBLE GLAZING
- WALK OF STATION



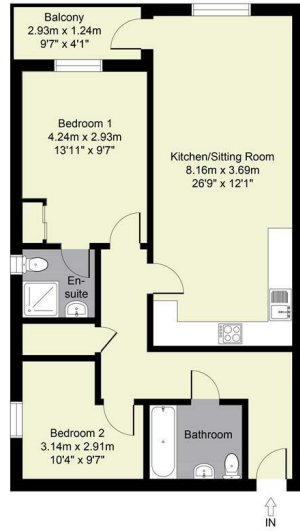
8 Sovereign Place Queens Road, High Wycombe, Bucks, HP13 6EG

Estate Agents ~ Lettings Agents ~ Valuers ~ Independent Mortgage Advisors

Hurst Estate Agents, 1 Crendon Street, High Wycombe, Bucks, HP13 6LE Tel: 01494 521234 Fax: 01494 523392 Email: wyc@hursts.co.uk Web: www.hursts.co.uk

EPC Rating: 85

Total Approx. Floor Area 774 sq.ft / 72 sq.m



All measurements of walls, doors, windows and fitting and appliances, including their size and location, are shown as standard sizes and therefore cannot be regarded as a representation by the seller.

Hurst Estate Agents

