



**£1,000 PCM**    *Unfurnished*

**\*\*AVAILABLE LATE MAY\*\***

Situated on the popular Lavender Grange estate close to Stoke Mandeville hospital is this one bedroom end of terrace house. The accommodation comprises; living room, fitted kitchen, a large bedroom and bathroom with shower over the bath. The property also benefits from; allocated parking, UPVC double glazing and gas central heating.

HOLDING FEE: £230.76

DEPOSIT REQUIRED: £1,153.84

TENANCY LENGTH: 12 MONTHS

- AVAILABLE LATE MAY
- FITTED KITCHEN
- UNFURNISHED
- UPVC DOUBLE GLAZING
- DOUBLE BEDROOM
- OFF ROAD PARKING
- CLOSE TO TOWN
- LIVING ROOM
- GAS CENTRAL HEATING
- LAVENDER GRANGE



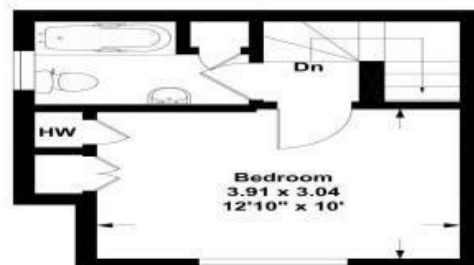
**40 Holly Drive, Aylesbury, HP21 8XS**

Estate Agents ~ Lettings Agents ~ Valuers ~ Independent Mortgage Advisors

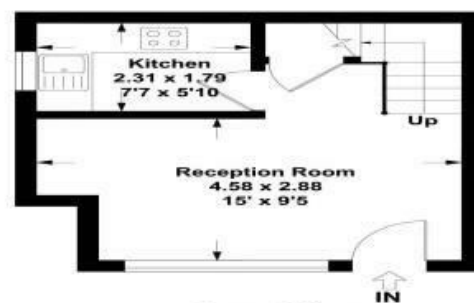
Hurst Estate Agents, 1 Crendon Street, High Wycombe, Bucks, HP13 6LE Tel: 01494 521234 Fax: 01494 523392 Email: [wyc@hursts.co.uk](mailto:wyc@hursts.co.uk) Web: [www.hursts.co.uk](http://www.hursts.co.uk)

**Holly Drive, Aylesbury HP21 8XS**

Approx. Gross Internal Area  
42 Sq m - 452 Sq ft



First Floor



Ground Floor

This floor plan is not to scale. It is for guidance only  
and accuracy is not guaranteed.

