



PCM

£1,850



****AVAILABLE NOW****

A beautifully presented three bedroom end of terrace home forming part of this exclusive development ideally located in a green fronting position in the heart of the thriving village of Wooburn Green. The property is available now on an unfurnished basis and the landlord is ideally looking for long term tenants. The accommodation comprises; entrance hall, guest cloakroom, large living room with feature fireplace and under stairs storage cupboard, modern fitted kitchen with integrated appliances, three bedrooms, master bedroom with built in wardrobes and en-suite shower room, and modern family bathroom. The property further benefits; driveway parking to the rear for several cars, gas central heating, enclosed rear garden with side gate access, outside tap, garden studio and garden shed.

HOLDING FEE: £426.92

DEPOSIT REQUIRED: £2,134.62

LENGTH OF TENANCY: 12 MONTHS

- AVAILABLE NOW
- WOOBURN GREEN
- THREE BEDROOMS
- EN-SUITE SHOWER ROOM
- GARDEN STUDIO
- OPPOSITE GREEN
- UNFURNISHED
- GUEST CLOAKROOM
- DRIVEWAY PARKING
- IMMACULATE CONDITION

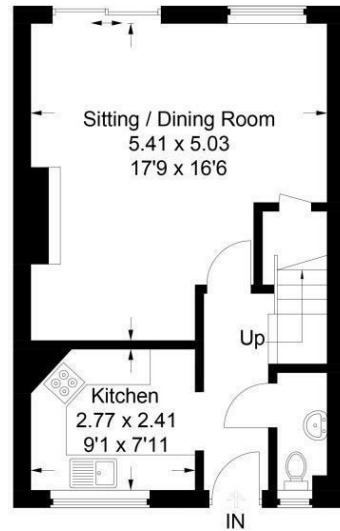


Victoria Cottage The Green, Wooburn Green, Bucks, HP10 0EU

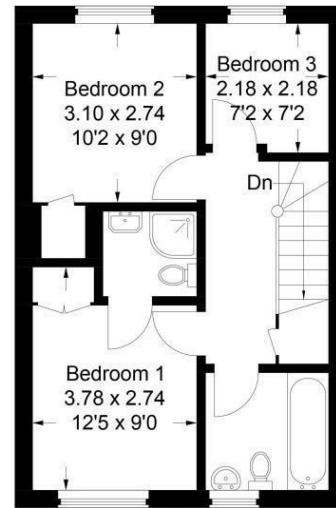
Estate Agents ~ Lettings Agents ~ Valuers ~ Independent Mortgage Advisors

Hurst Estate Agents, 1 Crendon Street, High Wycombe, Bucks, HP13 6LE Tel: 01494 521234 Fax: 01494 523392 Email: wyc@hursts.co.uk Web: www.hursts.co.uk

EPC Rating: 70

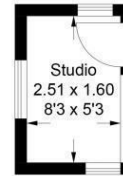


Ground Floor



**First Floor
Victoria Cottage**

Approximate Gross Internal Area
Ground Floor = 40.6 sq m / 437 sq ft
First Floor = 40.1 sq m / 432 sq ft
Studio = 4 sq m / 43 sq ft
Total = 84.7 sq m / 912 sq ft



(Not Shown In Actual
Location / Orientation)

This plan is for layout guidance only. Not drawn to scale unless stated. Windows and door openings are approximate. Whilst every care is taken in the preparation of this plan, please check all dimensions, shapes and compass bearings before making any decisions reliant upon them.
© C.J Property Marketing Ltd Produced for Tim Russ & Company

