



£1,900 PCM *Unfurnished*

AVAILABLE NOW. UNFURNISHED

A three bedroom townhouse, in an exclusive development, situated in a prestigious private cul-de-sac located to the West side of High Wycombe, and within easy reach of the town centre. This fabulous family home arranged over three floors offers versatile and spacious living of more than 1200sqft. The ground floor accommodation comprises; entrance hall, kitchen/ diner, bedroom three/study and guest cloakroom. Stairs lead down to the lower ground floor featuring a bright and spacious sitting room with patio doors out to enclosed garden, large utility room and guest cloakroom. On the first floor is the master bedroom with en-suite, further double bedroom and family bathroom. The property also benefits from; allocated parking for two cars, UPVC double glazing and ground source heat pump heating system.

HOLDING FEE: £438.46

DEPOSIT REQUIRED: £2192.30

LENGTH OF TENANCY: 12 MONTHS

- AVAILABLE NOW
- THREE BEDROOMS
- MODERN KITCHEN
- CLOSE TO TOWN
- SEPARATE UTILITY
- TOWNHOUSE
- EN-SUITE TO MASTER
- GARDEN
- ALLOCATED PARKING
- SPACIOUS LIVING

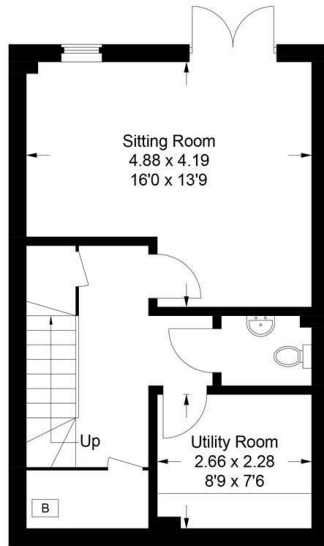


41 Templeside Gardens, High Wycombe, HP12 3FQ

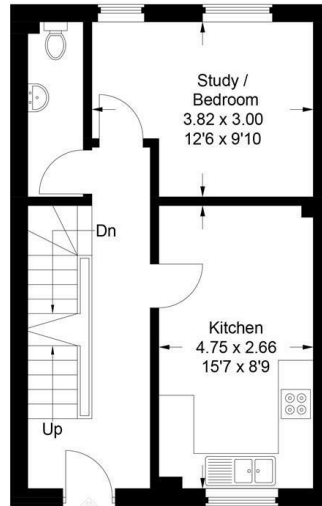
Estate Agents ~ Lettings Agents ~ Valuers ~ Independent Mortgage Advisors

Hurst Estate Agents, 1 Crendon Street, High Wycombe, Bucks, HP13 6LE Tel: 01494 521234 Fax: 01494 523392 Email: wyc@hursts.co.uk Web: www.hursts.co.uk

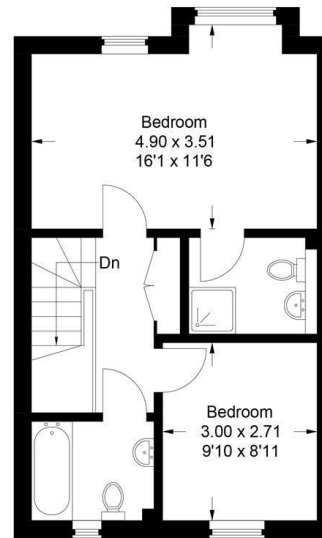
Approximate Gross Internal Area
 Lower Ground Floor = 39.4 sq m / 424 sq ft
 Ground Floor = 39.3 sq m / 423 sq ft
 First Floor = 40 sq m / 430 sq ft
 Total = 118.7 sq m / 1,277 sq ft



Lower Ground Floor



Ground Floor



First Floor

This plan is for layout guidance only. Not drawn to scale unless stated. Windows and door openings are approximate. Whilst every care is taken in the preparation of this plan, please check all dimensions, shapes and compass bearings before making any decisions reliant upon them.
 © CJ Property Marketing Ltd Produced for Hurst

Hurst
 Estate Agents

