



£1,300 PCM *Unfurnished*

AVAILABLE EARLY MAY

A well presented, two-bedroom ground floor apartment that is located in a secluded and highly desirable location, just a short walk of High Wycombe's town centre and train station that offers a direct line service into London Marylebone making it excellent for those looking to commute. The accommodation comprises; entrance hall, large lounge/diner with small table and chairs, modern fitted kitchen including oven, fridge, freezer and washer/dryer, two bedrooms and a bathroom. The property also benefits from; gas central heating, double glazing, allocated parking and communal gardens.

HOLDING FEE: £323.07

DEPOSIT REQUIRED: £1,615.38

LENGTH OF TENANCY: 12 MONTHS

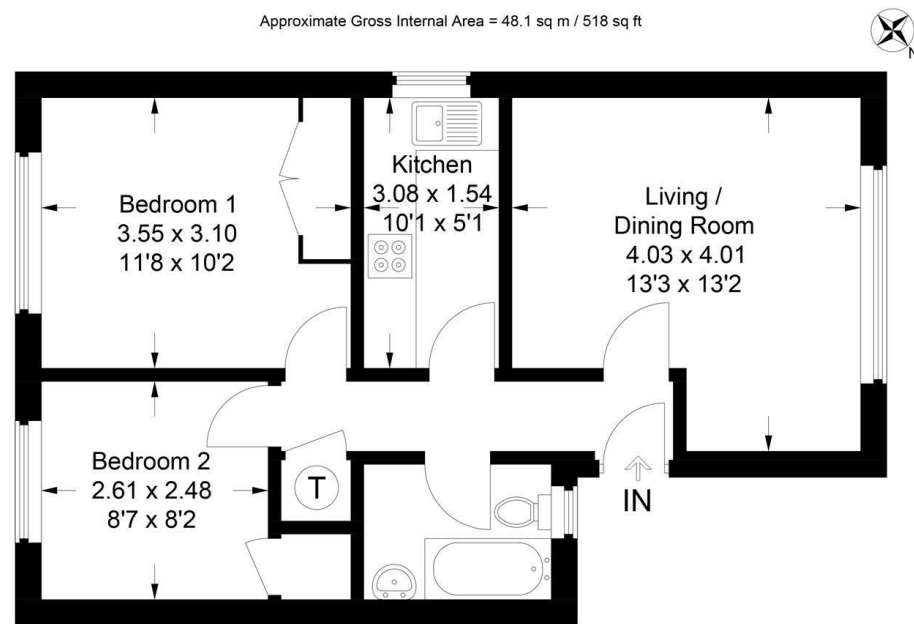
- AVAILABLE MAY
- ALLOCATED PARKING
- GROUND FLOOR
- FITTED KITCHEN
- QUIET LOCATION
- GAS CENTRAL HEATING
- COMMUNAL GARDENS
- CLOSE TO TRAIN STATION
- WALK OF RYE PARK
- TWO BEDROOMS



15 Willow Court Bassetsbury Lane, High Wycombe, Bucks, HP11 1RN

Estate Agents ~ Lettings Agents ~ Valuers ~ Independent Mortgage Advisors

Hurst Estate Agents, 1 Crendon Street, High Wycombe, Bucks, HP13 6LE Tel: 01494 521234 Fax: 01494 523392 Email: wyc@hursts.co.uk Web: www.hursts.co.uk



Ground Floor

This plan is for layout guidance only. Not drawn to scale unless stated. Windows and door openings are approximate. Whilst every care is taken in the preparation of this plan, please check all dimensions, shapes and compass bearings before making any decisions reliant upon them.
© CJ Property Marketing Ltd Produced for Hurst

Hurst
Estate Agents

