



£1,000 PCM *Unfurnished*

*****COMMERCIAL OFFICE/FACTORY SPACE*****

A large, 1425 sq ft detached barn conversion offering commercial office/factory space in this popular, quiet little business park. The barn is located in Rowsham which is a quiet hamlet between Aylesbury and Leighton Buzzard on the A418. This unit was last used as an office space and has a fitted kitchen area, several segregated offices, large open-plan office area and toilet facilities. Outside there is plenty of off-road parking. This facility has always let very quickly in the past, so an early viewing is highly recommended.

- DETACHED BARN CONVERSION
- KITCHEN & TOILET FACILITIES
- VERSATILE COMMERCIAL SPACE
- AMPLE OFF ROAD PARKING

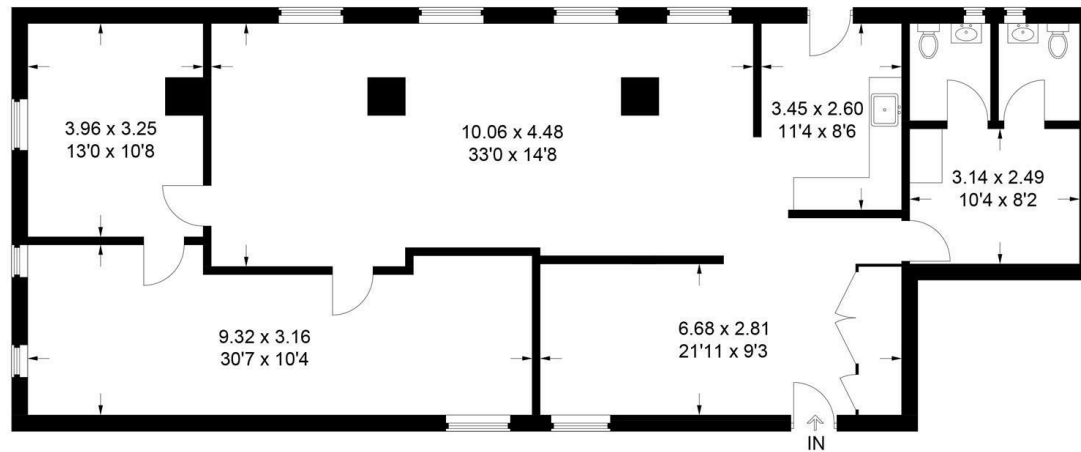


The Dutch Barn Manor Farm Courtyard, Rowsham, Aylesbury,

Estate Agents ~ Lettings Agents ~ Valuers ~ Independent Mortgage Advisors

Hurst Estate Agents, 1 Crendon Street, High Wycombe, Bucks, HP13 6LE Tel: 01494 521234 Fax: 01494 523392 Email: wyc@hursts.co.uk Web: www.hursts.co.uk

Approximate Gross Internal Area
132.4 sq m / 1425 sq ft



This plan is for layout guidance only. Not drawn to scale unless stated. Windows and door openings are approximate. Whilst every care is taken in the preparation of this plan, please check all dimensions, shapes and compass bearings before making any decisions reliant upon them.
© CJ Property Marketing Ltd Produced for Hurst

