



£1,700 PCM *Unfurnished*

****AVAILABLE NOW****

This THREE BEDROOM end terrace house is situated within the Cressex area of High Wycombe, within walking distance of Wycombe High School and John Hampden Grammar School. The property is located within close proximity to local amenities, including the leisure centre, cinema and supermarket and easy access of junction 4 of the M40. The accommodation comprises; entrance hall, living room, kitchen/ dining room, two DOUBLE BEDROOMS, single bedroom and family bathroom. The property also benefits from ENCLOSED GARDEN with patio area, UPVC double glazing and gas central heating.

HOLDING FEE: £392.30

DEPOSIT REQUIRED: £1961.53

LENGTH OF TENANCY: 12 MONTHS

- WALK OF GRAMMAR SCHOOLS
- GAS CENTRAL HEATING
- CUL-DE-SAC LOCATION
- CLOSE TO J.4 M40
- AVAILABLE NOW
- THREE BEDROOMS
- FAMILY BATHROOM
- INTERNAL VIEWING ADVISED

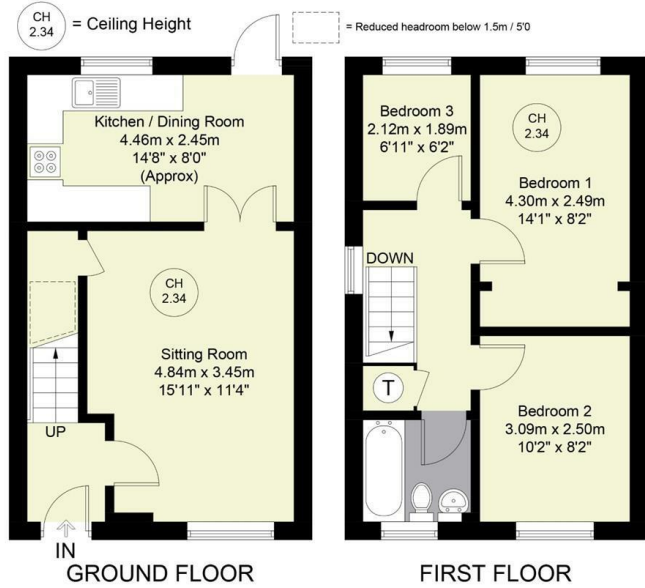


6 Redhouse Close, High Wycombe, HP11 1TT

Estate Agents ~ Lettings Agents ~ Valuers ~ Independent Mortgage Advisors

Redhouse Close

Approximate Gross Internal Area
Ground Floor = 359 sq ft / 33.4 sq m
First Floor = 356 sq ft / 33.1 sq m
Total = 715 sq ft / 66.5 sq m



Floor Plan produced for Hursts by Media Arcade ©.
Illustration for identification purposes only. Window and door openings are approximate. Whilst every attempt is made to assure accuracy in the preparation of this plan, please check all dimensions, shapes and compass bearings before making any decisions reliant upon them.

