

PCM

**£850**

**\*\*AVAILABLE NOW\*\***

Located within walking distance of Aylesbury town centre and train station is this well presented, one bedroom, first floor apartment in good condition throughout. The accommodation comprises; entrance hall, lounge/diner, spacious kitchen with appliances, double bedroom and modern bathroom. The property also benefits from; off road parking, UPVC double glazing and electric heating.

HOLDING DEPOSIT: £196.15

DEPOSIT REQUIRED: £980.76

TENANCY LENGTH: 12 MONTHS TENANCY

- AVAILABLE OCTOBER
- FIRST FLOOR
- PRIVATE CAR PARK
- CLOSE TO TRAIN STATION
- ELECTRIC HEATING
- DOUBLE BEDROOM
- WALK OF TOWN CENTRE
- DOUBLE GLAZING
- MODERN KITCHEN
- QUIET LOCATION



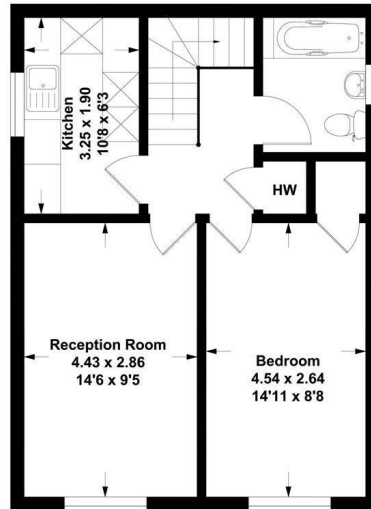
**6C Northern Road, Aylesbury, HP19 9QU**

Estate Agents ~ Lettings Agents ~ Valuers ~ Independent Mortgage Advisors

**Northern Road, Aylesbury HP19 9QU**

Approx. Gross Internal Area

45 Sq m - 484 Sq ft



This floor plan is not to scale. It is for guidance only and accuracy is not guaranteed.