



£1,400 PCM *Unfurnished*

*** AVAILABLE NOW. UNFURNISHED ***

A bright and airy beautifully presented two bedroom, ground floor apartment located in a quiet cul-de-sac conveniently located within walking distance of High Wycombe's town centre and railway station which offers a direct line service into London Marylebone. The accommodation comprises; entrance hallway, large lounge/ dining room, separate modern fitted kitchen, two bedrooms and family bathroom. The property further benefits from; UPVC double glazing, economy 7 heating, allocated parking for one car, communal gardens.

HOLDING FEE: £323.08

DEPOSIT REQUIRED: £1,615.38

LENGTH OF TENANCY: 12 MONTHS

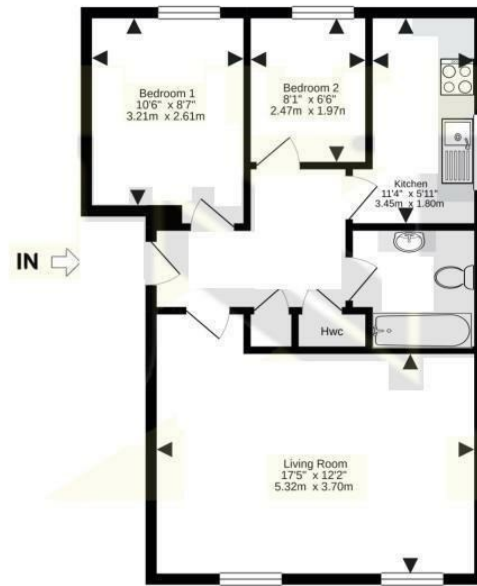
Before contacting us to enquire, please make sure you have the following information available:

- AVAILABLE NOW
- CLOSE TO TRAIN STATION
- ALLOCATED PARKING
- LARGE LOUNGE/DINER
- UPVC DOUBLE GLAZING
- TWO BEDROOMS
- QUIET CUL-DE-SAC
- ELECTRIC HEATING
- MODERN KITCHEN
- GOOD CONDITION



7 Lower Furney Close, High Wycombe, Buckinghamshire, HP13 6XQ

Estate Agents ~ Lettings Agents ~ Valuers ~ Independent Mortgage Advisors



Lower Furney Close, High Wycombe, Buckinghamshire, HP13 6XQ

