



£210,000 *Freehold*

A modern, one-bedroom house with private enclosed garden located in this quiet cul-de-sac on the popular Hawkslade II development on the Stoke Mandeville side of Aylesbury. The property has been well maintained by its present owner and is in good condition throughout. The accommodation includes; lounge/dining room, fitted kitchen with integrated hob and oven, double bedroom with built-in wardrobe, bathroom. The property also benefits from; gas central heating to radiators, UPVC double glazing, allocated parking and enclosed private garden. The property is being sold with no onward chain.

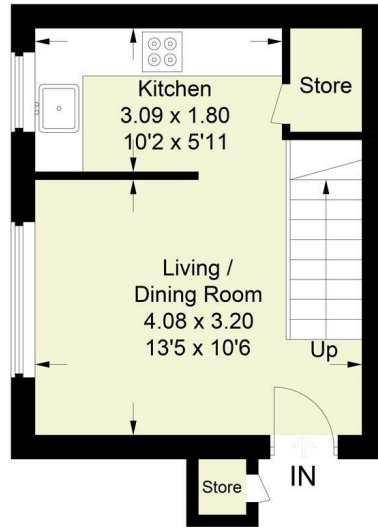
- LOUNGE/DINING ROOM
- DOUBLE BEDROOM
- GAS CENTRAL HEATING
- ALLOCATED PARKING
- GOOD CONDITION THROUGH
- FITTED KITCHEN
- BUILT IN WARDROBE
- UPVC DOUBLE GLAZING
- ENCLOSED PRIVATE GARDEN
- NO ONWARD CHAIN



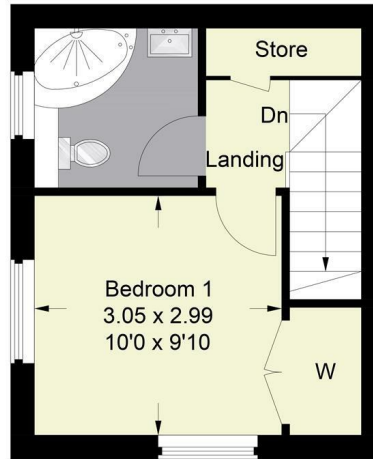
46 Parslow Close, Aylesbury, Bucks, HP21 9JD

Estate Agents ~ Lettings Agents ~ Valuers ~ Independent Mortgage Advisors

Approximate Gross Internal Area
 Ground Floor = 21.0 sq m / 226 sq ft
 First Floor = 20.9 sq m / 225 sq ft
 Total = 41.9 sq m / 451 sq ft
 (Excluding External Store)



Ground Floor



First Floor

This plan is for layout guidance only. Not drawn to scale unless stated. Windows and door openings are approximate. Whilst every care is taken in the preparation of this plan, please check all dimensions, shapes and compass bearings before making any decisions reliant upon them.
 © CJ Property Marketing Ltd Produced for Hurst

