



£1,400 PCM *Unfurnished*

****AVAILABLE MID JULY****

This two bedroom end of terrace town house is situated in a quiet cul-de-sac in the sought after location of Downley Heights. The accommodation comprises; spacious entrance hallway, lounge/dining room with large balcony, fitted kitchen, two bedrooms (one with a fitted wardrobe) and modern family bathroom. The property further benefits from; double glazing, gas central heating, enclosed rear garden, garage and driveway parking.

HOLDING FEE: £323.08

DEPOSIT REQUIRED: £1,615.38

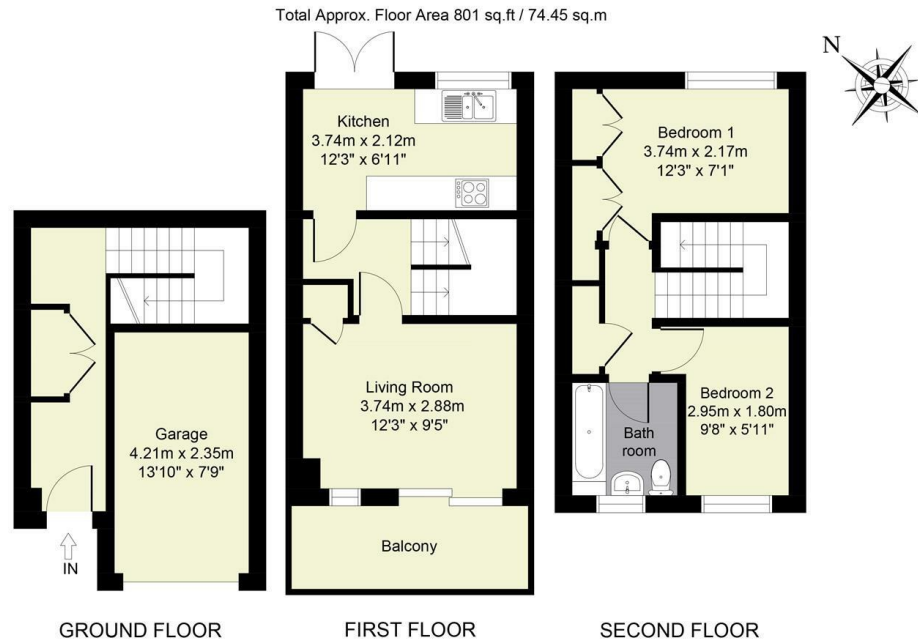
LENGTH OF TENANCY: 12 MONTHS

- AVAILABLE MID JULY
- GARAGE
- PRIVATE GARDEN
- PRIME LOCATION
- MODERN BATHROOM
- DRIVEWAY PARKING
- DOUBLE GLAZING
- GAS CENTRAL HEATING
- TWO BEDROOMS
- LOUNGE/DINING ROOM



10 Mylne Close, High Wycombe, Bucks, HP13 5TJ

Estate Agents ~ Lettings Agents ~ Valuers ~ Independent Mortgage Advisors



All measurements of walls, doors, windows and fitting and appliances, including their size and location, are shown as standard sizes and therefore cannot be regarded as a representation by the seller.

