



**£1,400 PCM**    *Unfurnished*

\*\* AVAILABLE EARLY JULY \*\*

This two bedroom modern ground floor apartment with covered balcony/terrace that has been well maintained and is in excellent condition throughout. The property is located in a quiet cul-de-sac towards the Loudwater side of High Wycombe, close to the train station and town centre. The accommodation includes; large reception hall, open plan lounge/dining room/modern fitted kitchen, master bedroom with en-suite shower room, very large second bedroom, modern bathroom. The property also benefits from; gas central heating, UPVC double glazing and allocated parking.

HOLDING FEE: £323.08

DEPOSIT REQUIRED: £1,615.38

TENANCY LENGTH: 12 MONTHS

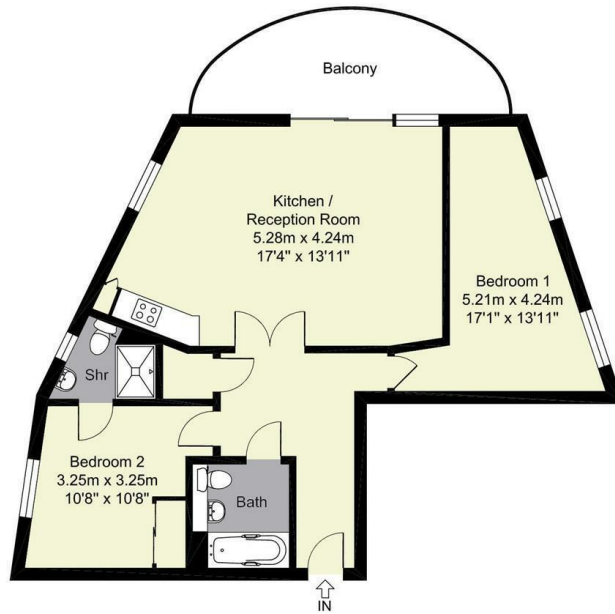
- AVAILABLE JULY
- COVERED BALCONY
- GROUND FLOOR
- GAS CENTRAL HEATING
- TWO DOUBLE BEDROOMS
- EN-SUITE TO MASTER BED
- ALLOCATED PARKING
- LARGE LOUNGE AREA
- UPVC DOUBLE GLAZING
- CLOSE TO TOWN



**1 Kernmantle House, The Roperies, High Wycombe, Bucks, HP13 7FT**

Estate Agents ~ Lettings Agents ~ Valuers ~ Independent Mortgage Advisors

Total Approx. Floor Area 761 Sq.ft / 70 sq.m



All measurements of walls, doors, windows, fittings and appliances, including their size and location, are shown as standard sizes and therefore cannot be regarded as a representation by the seller.

