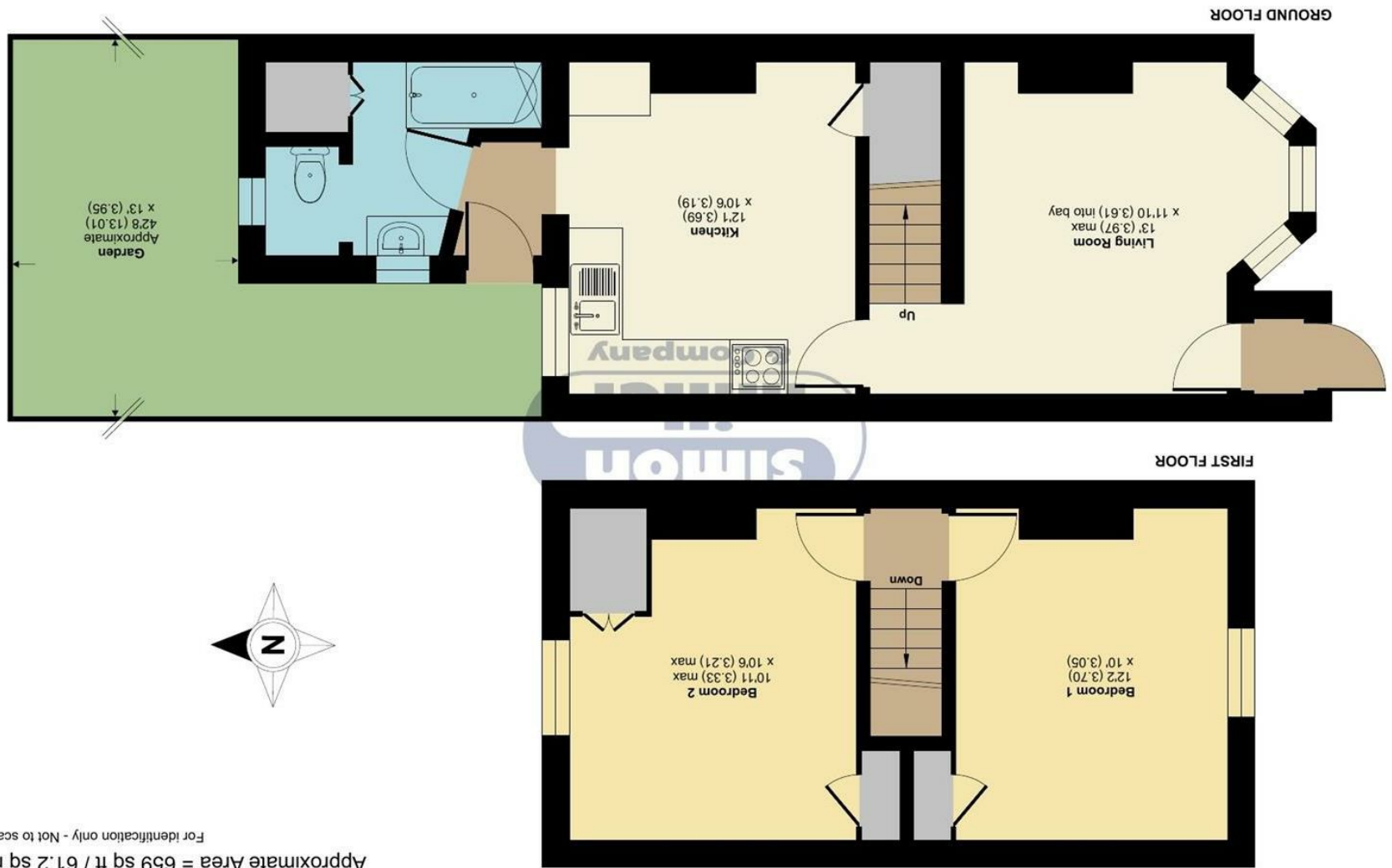


Floor plan produced in accordance with RICS Property Measurement 2nd Edition. © nchecom 2025. Produced for Simon Miller & Company. REF: 1384345



Beaconsfield Road, Maidstone, ME15

27 Beaconsfield Road, Maidstone, ME15 6RU

Asking Price £270,000
EPC RATING: D





Situated on Beaconsfield Road in the charming town of Maidstone, this delightful Victorian terraced house presents an excellent opportunity for families and first-time buyers alike. This chain-free property boasts two spacious double bedrooms, providing ample room for relaxation and rest.

Upon entering, you are welcomed by a large bay fronted reception room, which is perfect for entertaining guests or enjoying quiet evenings at home. The open plan kitchen and dining area create a warm and inviting space, ideal for family meals and gatherings. The convenience of a downstairs bathroom adds to the practicality of this home, making daily routines effortless.

The good-sized rear garden is a true highlight, featuring both a patio and a lawn area, perfect for outdoor activities, gardening, or simply enjoying the fresh air. This outdoor space offers a wonderful retreat for both children and adults alike.

Situated in a sought-after location, this property provides easy access to Maidstone town centre, where you can find a variety of shops, restaurants, and amenities. Additionally, the nearby river walks offer a scenic escape for leisurely strolls and outdoor enjoyment.

This Victorian family home combines character with modern living, making it a perfect choice for those looking to settle in a vibrant community. Don't miss the chance to make this charming property your own.

MATERIAL INFORMATION

Freehold
Council Tax Band B
EPC Report D



• CHAIN FREE • Two Double Bedroom Victorian Family Home • Large Bay Fronted Reception Room • Open Plan Kitchen/Diner • Downstairs Bathroom • Good Sized Rear Garden With Patio And Lawn Area • Sought After Maidstone Location • Easy Access To Maidstone Town Center And River Walks

Agents Note: All dimensions are approximate and quoted for guidance only. Reference to appliances, fixtures, fittings and services does not imply that they are necessarily in good condition, fit the purpose or are in working order. Interested parties are advised to obtain verification from their Solicitors as to the Freehold/Leasehold status of the property and confirmation regarding the condition of any fixtures and fittings included in the sale.

11, COLMAN HOUSE, MAIDSTONE, KENT, ME14 1DJ | 01622 691255 | MAIDSTONESALES@SIMONMILLER.CO.UK