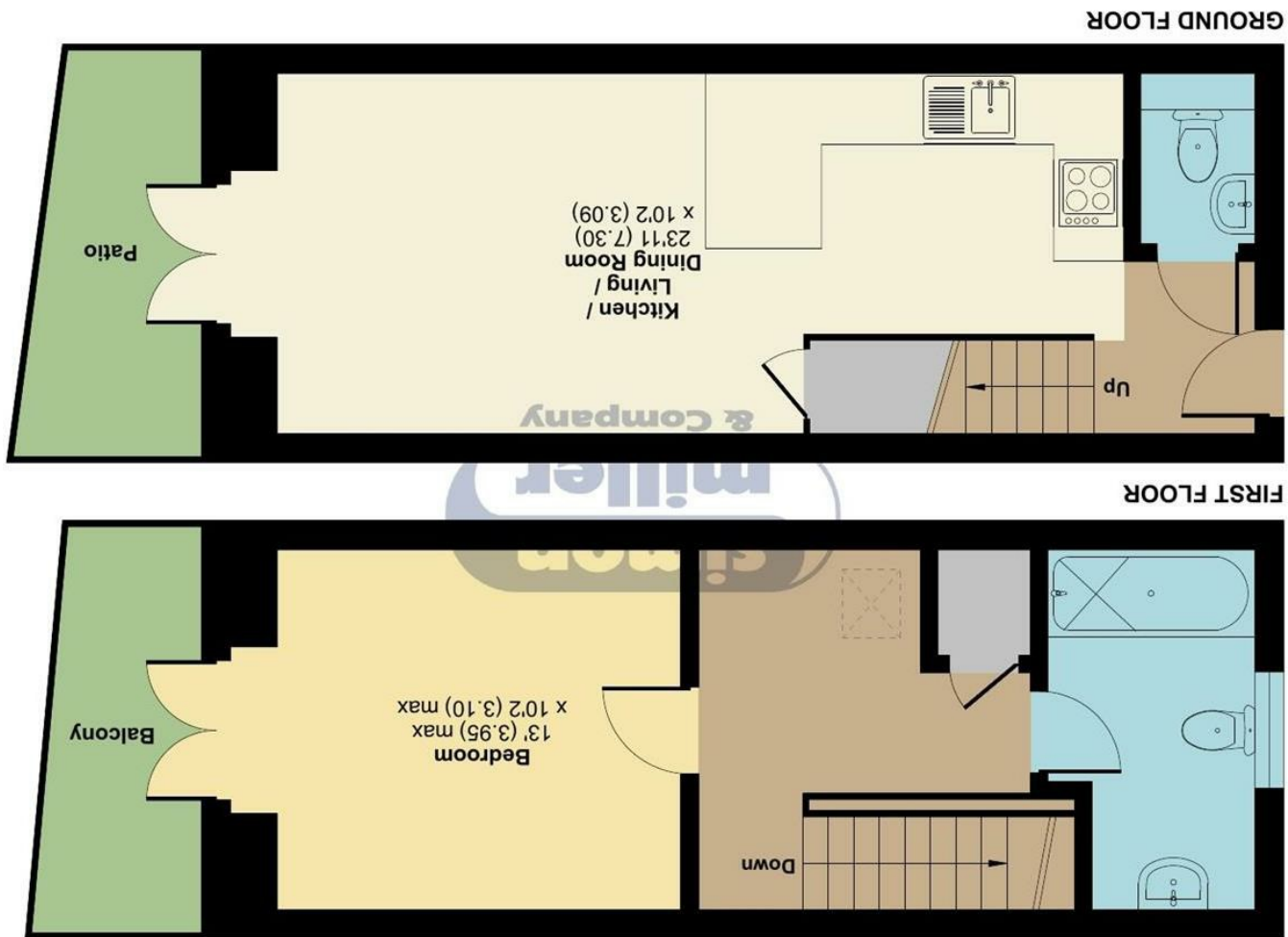


Floor plan produced in accordance with RICS Property Measurement 2nd Edition, incorporating International Property Measurement Standards (IPMS2 Residential). © nchecom 2025. Produced for Simon Miller & Company. REF: 1302467



Approximate Area = 574 sq ft / 53.3 sq m  
For identification only - Not to scale

Buckland Road, Maidstone, ME16

Guide Price £250,000  
EPC RATING: C

18A Buckland Road, Maidstone, ME16 0SL







Situated on Buckland Road in Maidstone, is this newly built semi-detached house which presents an excellent opportunity for those seeking a comfortable and convenient living space. This delightful one-bedroom freehold property is perfect for first-time buyers or those looking to downsize.

Upon entering, you will find a welcoming reception room and the fully fitted kitchen is both practical and stylish. Additionally, the property features a convenient downstairs W/C, enhancing the functionality of the home.

One of the standout features of this property is the access to balconies from both the lounge and the bedroom. Another benefit includes a large landing space with a sky light, ideal for a study space. The location is particularly advantageous, as it is within walking distance to local train stations which provide fast trains directly into London. Also, a variety of local amenities are just a stone's throw away.

### MATERIAL INFORMATION

**Freehold**  
**Council Tax Band B**  
**EPC Report C**



• Guide Price £250,000 - £275,000 • 1 Bedroom Freehold House • Walking Distance To Train Stations and Local Amenities • Downstairs W/C • Fully Fitted Kitchen • Parking Available - Discuss with Agent

Agents Note: All dimensions are approximate and quoted for guidance only. Reference to appliances, fixtures, fittings and services does not imply that they are necessarily in good condition, fit the purpose or are in working order. Interested parties are advised to obtain verification from their Solicitors as to the Freehold/Leasehold status of the property and confirmation regarding the condition of any fixtures and fittings included in the sale.

11, COLMAN HOUSE, MAIDSTONE, KENT, ME14 1DJ | 01622 691255 | MAIDSTONESALES@SIMONMILLER.CO.UK