



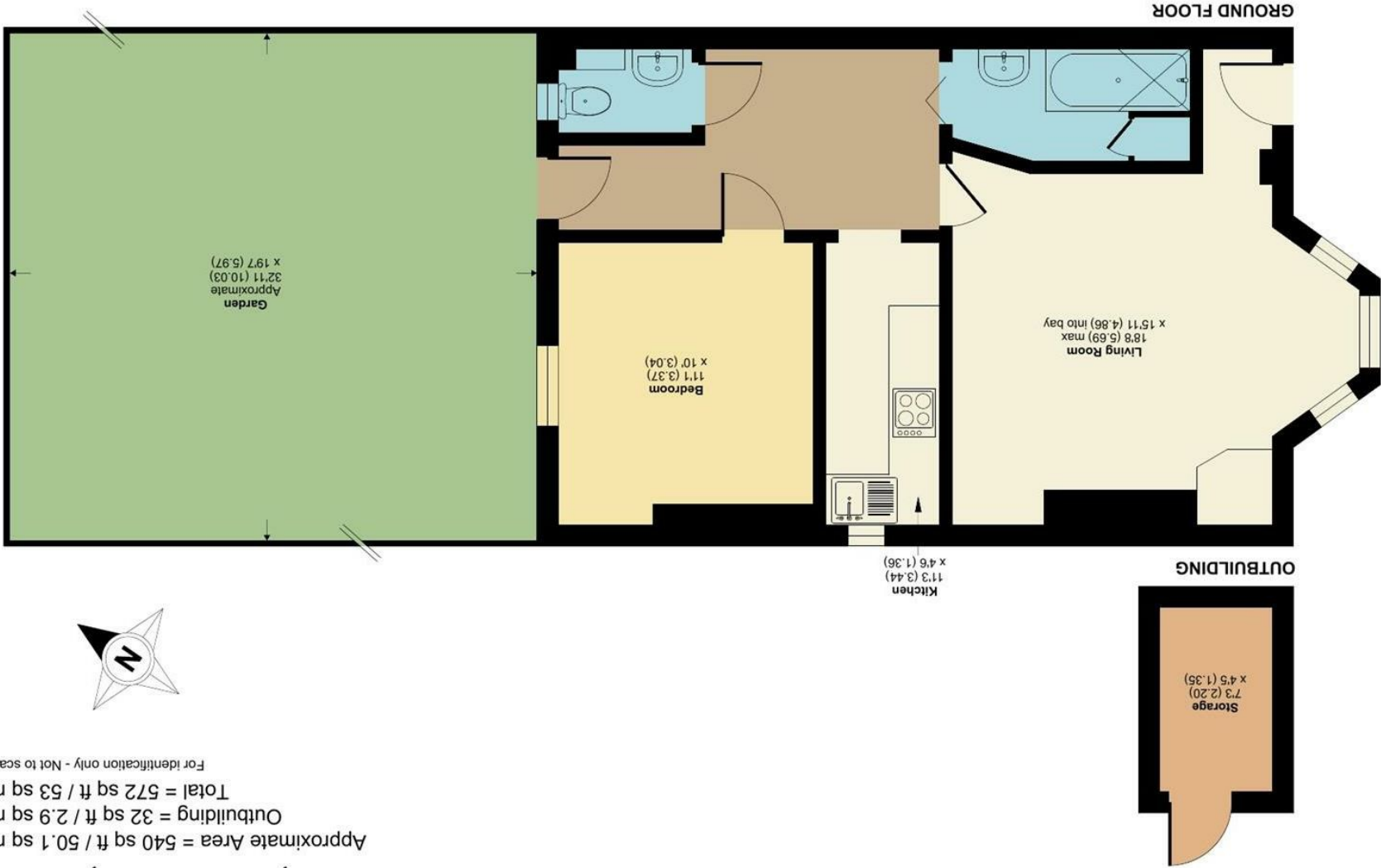
Flat A, 14 Buckland Hill, Maidstone, ME16 0SG

Guide Price £180,000
EPC RATING: F

Buckland Hill, Maidstone, ME16

Approximate Area = 540 sq ft / 50.1 sq m
Outbuilding = 32 sq ft / 2.9 sq m
Total = 572 sq ft / 53 sq m

For identification only - Not to scale



RICS
Certified
Property
Measurer
Floor plan produced in accordance with RICS Property Measurement Standards incorporating
International Property Measurement Standards (IPMS2 Residential). © nchecom 2024.
Produced for Simon Miller & Company. REF: 1195974

TAKE A LOOK AT: WWW.SIMONMILLER.CO.UK





GUIDE PRICE £180,000 - £190,000

Offered to the market is this very spacious and exceptionally charming one bedroom apartment in a prime Maidstone location. The property is nicely situated on a popular road on the outskirts of the ever popular Maidstone Town making it very convenient for accessing a range of different shops, transport links and social amenities. Internally the property offers a highly spacious sitting room with stunning bay window which invites plenty of natural light into the room, an attractive modern kitchen, a large double bedroom overlooking the private garden to rear and a good condition bathroom to complete the apartment. The property boasts some lovely period features throughout and is of a good specification from front to back. There is also the added benefit of parking to the front . This flat makes for a brilliant investment or first time buy so do not hesitate to get in touch and arrange a viewing appointment.

MATERIAL INFORMATION

Leasehold
Council Tax Band A
EPC Report F



• GUIDE PRICE £180,000 - £190,000 • One Bedroom Victorian Maisonette With Own Front Door • Own Private Rear Garden • Parking To The Front • Spacious Double Bedroom • Town Centre Location • Close to Maidstone East Train Station • Ideal First Time Or Investment Purchase • Lovely Lounge with Bay Window

Agents Note: All dimensions are approximate and quoted for guidance only. Reference to appliances, fixtures, fittings and services does not imply that they are necessarily in good condition, fit the purpose or are in working order. Interested parties are advised to obtain verification from their Solicitors as to the Freehold/Leasehold status of the property and confirmation regarding the condition of any fixtures and fittings included in the sale.

11, COLMAN HOUSE, MAIDSTONE, KENT, ME14 1DJ | 01622 691255 | MAIDSTONESALES@SIMONMILLER.CO.UK