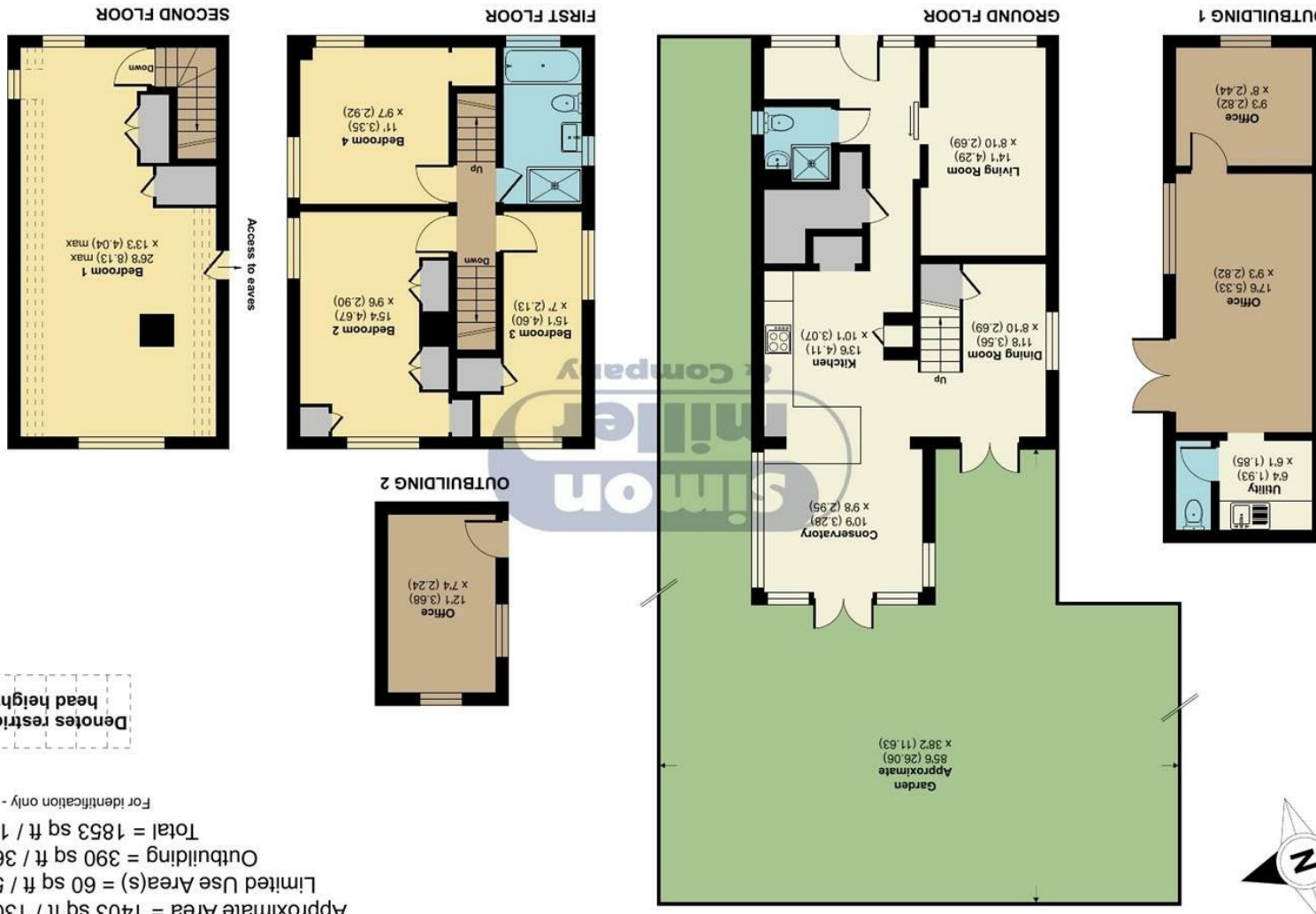


Floor plan produced in accordance with RICS Property Measurement Standards incorporating International Property Measurement Standards (IPMS2 Residential). © ndhcom 2023. Produced for Simon Miller & Company. REF: 957546



New House, Upper Street, Leeds, Maidstone, ME17

Offers Over £450,000
 EPC RATING: D

New House Upper Street, Maidstone, ME17 1RY





The "New House" a 4-bedroom, 2-bathroom detached house is located on Upper Street in the charming town of Leeds Maidstone. The house is designed with modern amenities and is constructed with high-quality materials to provide a comfortable and luxurious living experience.

The house boasts four spacious bedrooms, which provide ample space for a growing family or for hosting guests. Each of the bedrooms is designed with large windows that offer plenty of natural light, ensuring a bright and welcoming atmosphere.

The house features two bathrooms, both of which are elegantly designed and equipped with modern fixtures and fittings. One of the bathrooms has a bathtub and separate shower while the other has a shower, ensuring that the house is suitable for families with diverse needs.

MATERIAL INFORMATION

Freehold
Council Tax Band E
EPC Report D



- Four Bedroom Detached Family Home • Popular Leeds Village Location • Off Street Parking • Outbuildings With Annex Potential • Flexible Accommodation • Large Garden • Beautifully Presented Throughout • Close To Leeds Castle

Agents Note: All dimensions are approximate and quoted for guidance only. Reference to appliances, fixtures, fittings and services does not imply that they are necessarily in good condition, fit the purpose or are in working order. Interested parties are advised to obtain verification from their Solicitors as to the Freehold/Leasehold status of the property and confirmation regarding the condition of any fixtures and fittings included in the sale.

11, COLMAN HOUSE, MAIDSTONE, KENT, ME14 1DJ | 01622 691255 | MAIDSTONESALES@SIMONMILLER.CO.UK