



## Whealers Lane

, Linton ME17 4BL

- GUIDE PRICE £425,000 - £450,000
  - OFFERED CHAIN FREE
- Very Well Presented Throughout
- Off Street Parking for Two Cars
  - Workshop and two sheds
- Attractive Ragstone Semi Detached Home
  - New Hive Central Heating System
- En-Suite Shower Room and Family Bathroom
  - Wraparound Lawned Gardens
  - Character Features

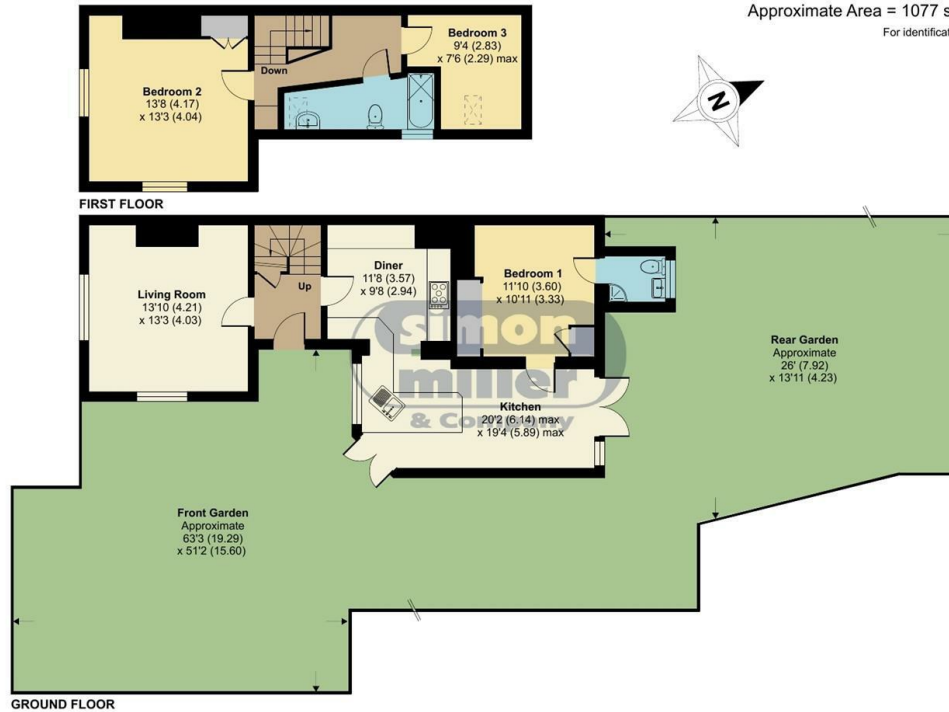
**Guide Price £425,000 Freehold**



Local Authority  
Council Tax Band E  
EPC Rating D

## Whealers Lane, Linton, Maidstone, ME17

Approximate Area = 1077 sq ft / 100 sq m  
For identification only - Not to scale



Floor plan produced in accordance with RICS Property Measurement Standards incorporating International Property Measurement Standards (IPMS2 Residential). © nichecom 2024. Produced for Simon Miller & Company. REF: 1124388



**Maidstone & The Weald Office**  
11 Colman House, Colman Parade, King  
Street, Maidstone, Kent, ME14 1DJ

**Contact**  
01622 691255  
maidstonesales@simonmiller.co.uk

Agents Note: Whilst every care has been taken to prepare these particulars, they are for guidance purposes only. All measurements are approximate and for general guidance purposes only and whilst every care has been taken to ensure accuracy, they should not be relied upon and potential buyers/tenants are advised to recheck the measurements.