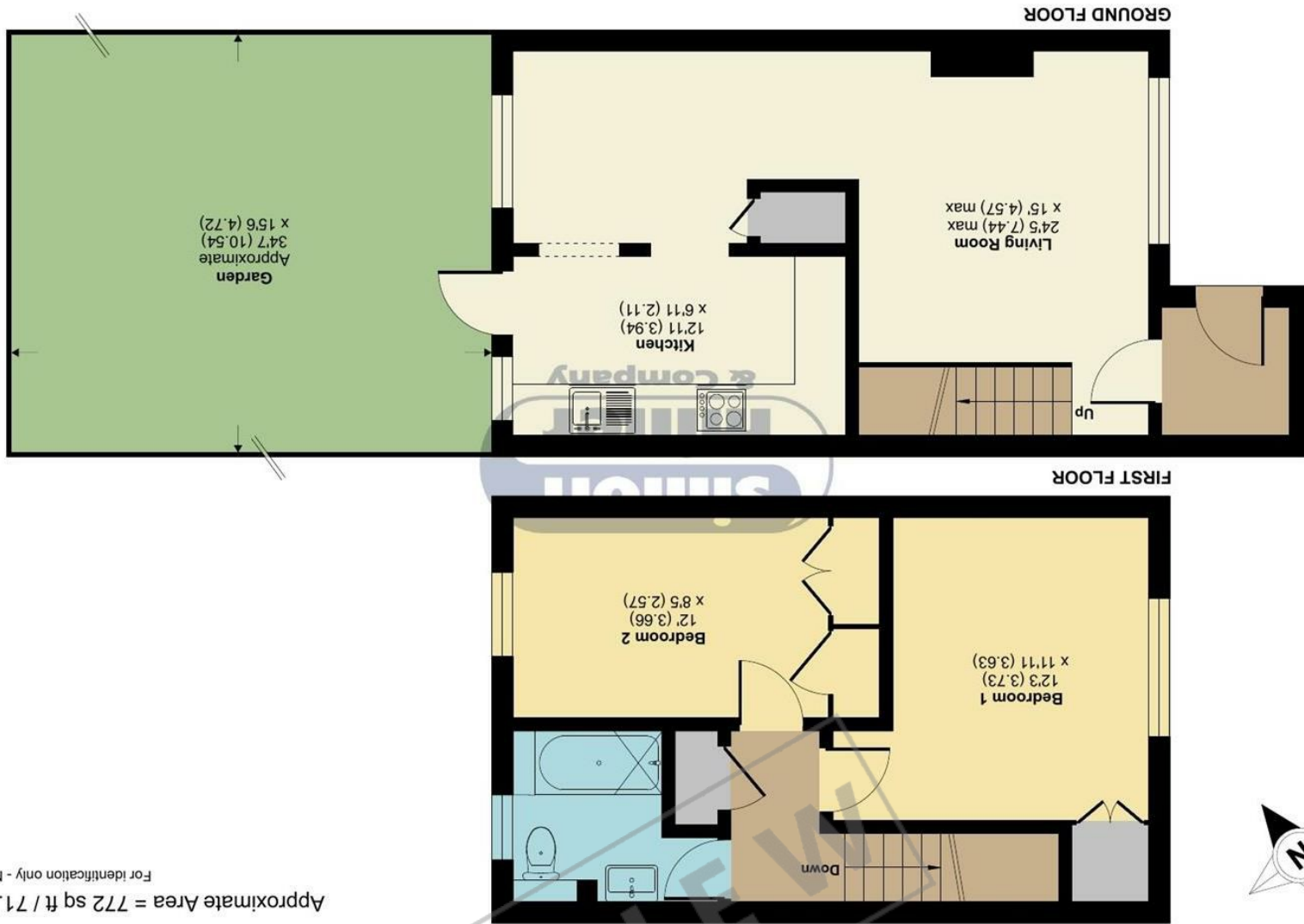


Floor plan produced in accordance with RICS Property Measurement Standards incorporating International Property Measurement Standards (IPMS2 Residential). © ndhcom 2024. Produced for Simon Miller & Company. REF: 1123140



Bicknor Road, Maidstone, ME15

70 Bicknor Road, Maidstone, ME15 9PA

£195,000
EPC RATING: D





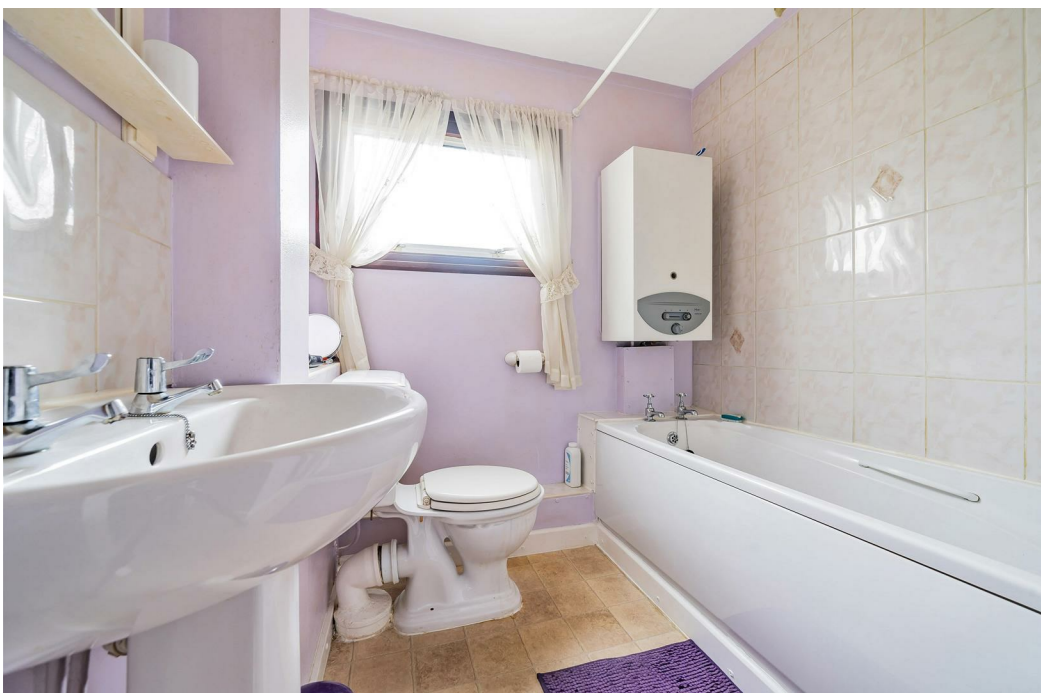
Located in this popular residential area, this two double bedroom home is being offered chain free and offers generous, well presented accommodation over two floors. The porch to the front leads into the open plan lounge/dining space, with kitchen beside and door from here to the rear garden. A staircase from the lounge leads to the first floor, with two bedrooms and a three piece bathroom suite. Outside, a gated pathway with gravel beds to both sides leads to the front porch and to the rear, a paved patio and path with artificial grass to both sides, flower beds and two sheds, with gated access to a shared rear parking area.

Being on NON-STANDARD Construction, buyers should make their own investigations into the suitability for a mortgage prior to viewing.

Conveniently located to both primary and secondary schools, shops and other amenities, Maidstone town centre, is within easy reach, with its wide range of shopping and leisure facilities and mainline train stations offering regular services into London.

MATERIAL INFORMATION

Freehold
Council Tax Band A
EPC Report D



- Non-Standard Construction
- Offered Chain Free
- Two Double Bedroom Terraced Home
- Well Presented Throughout
- Open Plan Living Space
- Three Piece Bathroom
- Parking Area to the Rear
- Popular Location

Agents Note: All dimensions are approximate and quoted for guidance only. Reference to appliances, fixtures, fittings and services does not imply that they are necessarily in good condition, fit the purpose or are in working order. Interested parties are advised to obtain verification from their Solicitors as to the Freehold/Leasehold status of the property and confirmation regarding the condition of any fixtures and fittings included in the sale.

11, COLMAN HOUSE, MAIDSTONE, KENT, ME14 1DJ | 01622 691255 | MAIDSTONESALES@SIMONMILLER.CO.UK