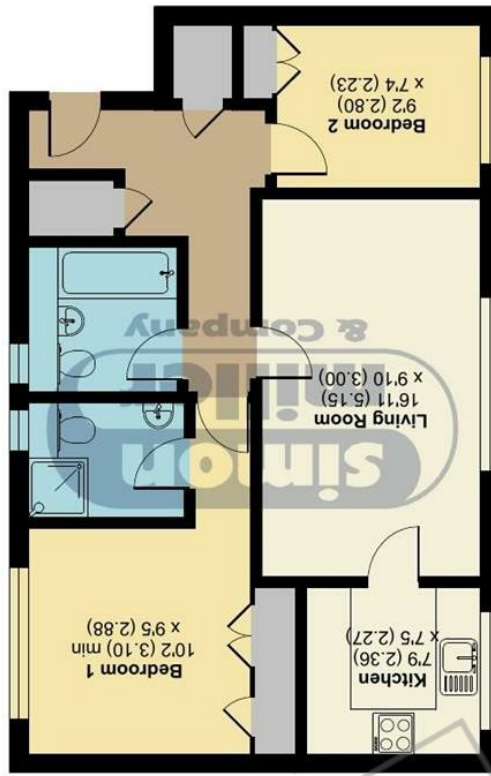


GROUND FLOOR



Approximate Area = 643 sq ft / 59.7 sq m  
For identification only - Not to scale

Queens Road, Maidstone, ME16

PREVIEW

Offers Over £225,000  
EPC RATING: D

2 The Sovereigns Queens Road, Maidstone, ME16 0JG







Tenure: Share of Freehold

If you are looking for a two bedroom property in a quiet location but close to the town, then look no further as this one takes some beating. The apartment is situated on the ground floor so you don't need to trudge up the stairs with your shopping! The accommodation itself is presented beautifully throughout with an open plan living-dining room, modern kitchen, main bedroom with built in wardrobes and en-suite, second bedroom with a built-in wardrobe, and a separate bathroom. The gardens wrap around the whole building and have an area for drying washing as well as numerous benches dotted around, enabling you to either chase the sun or stay in the shade. The property has an allocated parking space and there are a good number of visitors spaces too.

### MATERIAL INFORMATION

Leasehold - Share of Freehold

Council Tax Band

EPC Report D



• Chain Free Two Bedroom Ground Floor Apartment • Refurbished Throughout • En-Suite and Bathroom • Allocated Parking Space • Communal Gardens • Sought After Queens Road Location • Smart Heating

Agents Note: All dimensions are approximate and quoted for guidance only. Reference to appliances, fixtures, fittings and services does not imply that they are necessarily in good condition, fit the purpose or are in working order. Interested parties are advised to obtain verification from their Solicitors as to the Freehold/Leasehold status of the property and confirmation regarding the condition of any fixtures and fittings included in the sale.

11, COLMAN HOUSE, MAIDSTONE, KENT, ME14 1DJ | 01622 691255 | MAIDSTONESALES@SIMONMILLER.CO.UK