

APPROX. GROSS INTERNAL FLOOR AREA 685 SQ FT 63.6 SQ METRES
Clifford Way, Maidstone, ME16

104 Clifford Way, Maidstone, ME16 8GE

Guide Price £210,000
EPC RATING: B





GUIDE PRICE £210,000 - £220,000

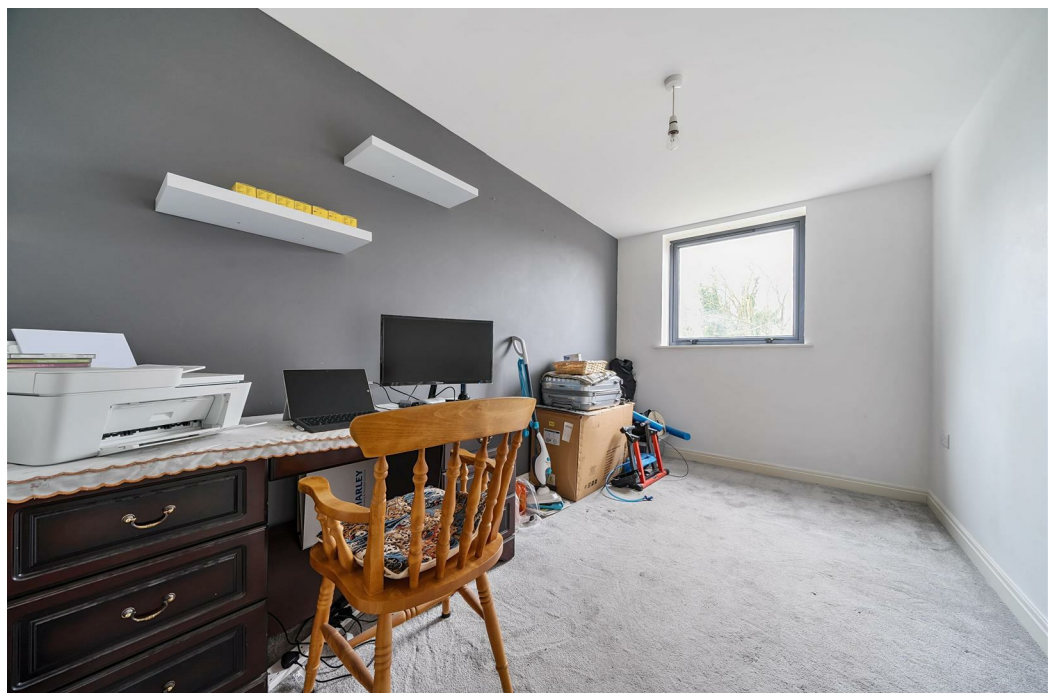
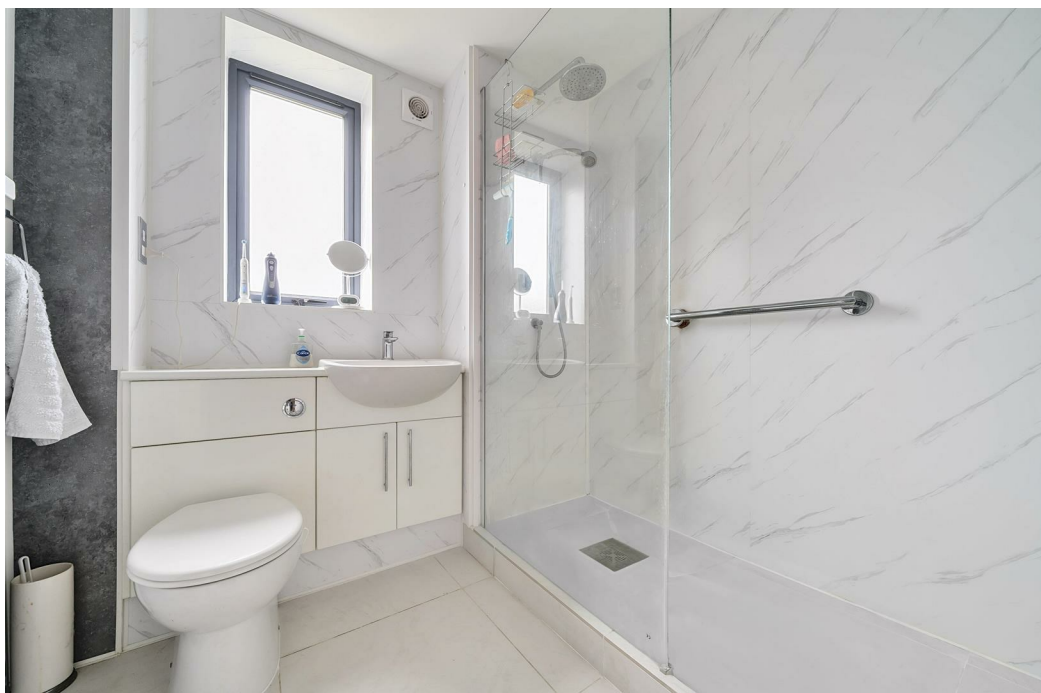
Simon Miller & Company are pleased to offer to the market this third-floor, purpose-built, modern apartment boasting two balconies.

With the benefit of undercover allocated parking, the property is available to view immediately and, given the popularity of this development and the convenient location, we would suggest arranging a viewing at your earliest convenience.

Internally, the property is very well presented throughout and offers a spacious hallway with multiple storage cupboards, a modern white bathroom suite, two good sized bedrooms plus an open-plan lounge/dining room with patio doors opening out onto balcony. In addition to this, there is a further balcony off one of the bedrooms plus there's a modern fitted kitchen with integrated appliances.

MATERIAL INFORMATION

Leasehold
Council Tax Band D
EPC Report B



- GUIDE PRICE £210,000 - £220,000 • Purpose Built Third-Floor Apartment • Two Bedrooms • Open-Plan Lounge/Kitchen/Diner • Modern Bathroom • Two Balconies • Undercover Allocated Parking Space • Popular Riverside Location • Close To Local Amenities • Residence Gym

Agents Note: All dimensions are approximate and quoted for guidance only. Reference to appliances, fixtures, fittings and services does not imply that they are necessarily in good condition, fit the purpose or are in working order. Interested parties are advised to obtain verification from their Solicitors as to the Freehold/Leasehold status of the property and confirmation regarding the condition of any fixtures and fittings included in the sale.

11, COLMAN HOUSE, MAIDSTONE, KENT, ME14 1DJ | 01622 691255 | MAIDSTONESALES@SIMONMILLER.CO.UK