



Lee Heights

Bambridge Court, Maidstone ME14 2LG

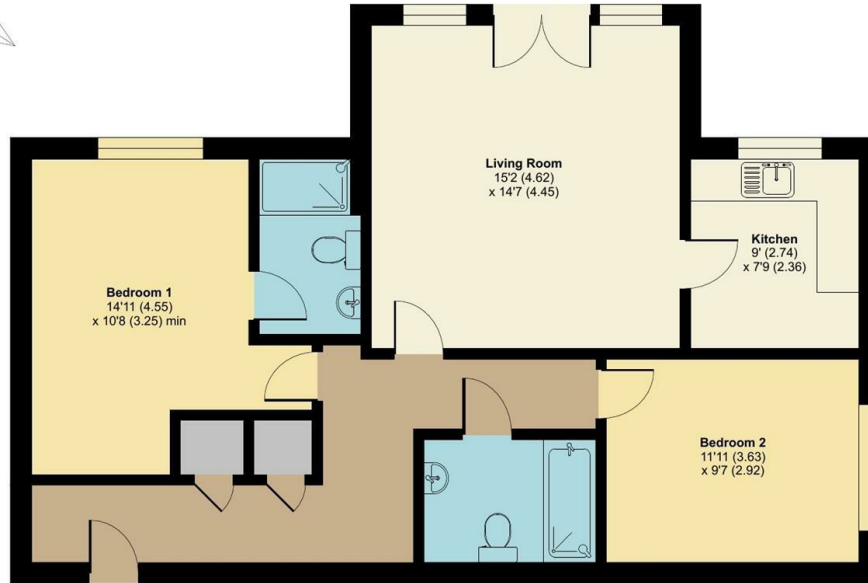
- GUIDE PRICE £210,000 - £220,000
- En- Suite and Family Bathroom
- Allocated Parking Space
- Offered Chain Free
- Spacious Lounge with Juliet Balcony
- Electric Heating
- Close to Maidstone Town Centre
- Two Bedrooms

Guide Price £210,000 Leasehold

Local Authority
Council Tax Band C
EPC Rating C

Lee Heights, Bambridge Court, Maidstone, ME14

Approximate Area = 846 sq ft / 78.5 sq m
For identification only - Not to scale



FIRST FLOOR



Floor plan produced in accordance with RICS Property Measurement Standards incorporating International Property Measurement Standards (IPMS2 Residential). © nichecom 2024. Produced for Simon Miller & Company. REF: 1069486

Maidstone & The Weald Office
11 Colman House, Colman Parade, King
Street, Maidstone, Kent, ME14 1DJ

Contact
01622 691255
maidstonesales@simonmiller.co.uk

Agents Note: Whilst every care has been taken to prepare these particulars, they are for guidance purposes only. All measurements are approximate and for general guidance purposes only and whilst every care has been taken to ensure accuracy, they should not be relied upon and potential buyers/tenants are advised to recheck the measurements.

