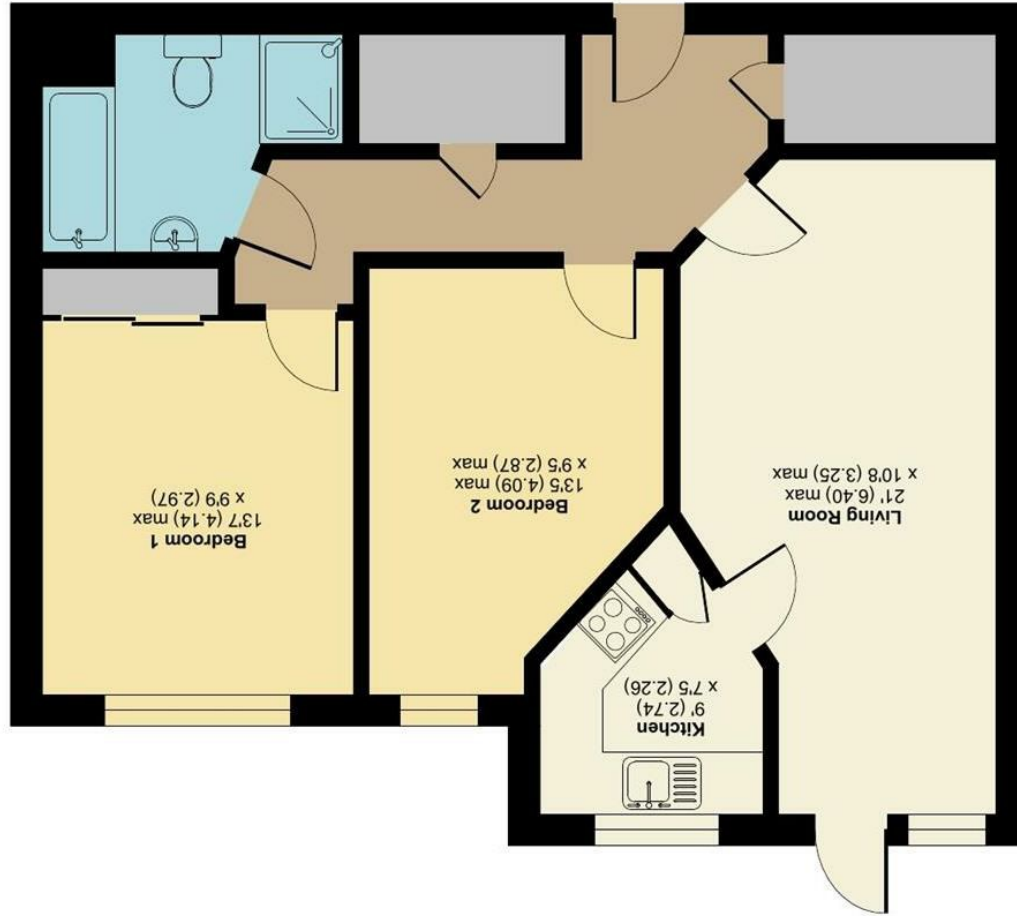


GROUND FLOOR



Approximate Area = 705 sq ft / 65.4 sq m  
For identification only - Not to scale

Culpeper Court, North Street, Headcorn, Ashford, TN27

2 Culpeper Court North Street, Ashford, TN27 9NN

£250,000  
EPC RATING: B





Presented in good condition throughout, this ground floor two double bedroom retirement apartment is located almost in the heart of the village and offers generous living accommodation in this popular McCarthy & Stone development.

### MATERIAL INFORMATION

Leasehold  
Council Tax Band D  
EPC Report B



- Rarely Available GROUND FLOOR Retirement Apartment • Two Double Bedrooms • Southerly Aspect Lounge with Door onto Patio Area • Communal Lounge with Kitchenette • On Site HOUSE MANAGER • Fitted Kitchen • Four Piece Bathroom Suite • Beautifully Maintained Gardens • Central Village Location • Guest Apartment Available

Agents Note: All dimensions are approximate and quoted for guidance only. Reference to appliances, fixtures, fittings and services does not imply that they are necessarily in good condition, fit the purpose or are in working order. Interested parties are advised to obtain verification from their Solicitors as to the Freehold/Leasehold status of the property and confirmation regarding the condition of any fixtures and fittings included in the sale.

11, COLMAN HOUSE, MAIDSTONE, KENT, ME14 1DJ | 01622 691255 | MAIDSTONESALES@SIMONMILLER.CO.UK