



St. Faiths Lane

Bearsted, Maidstone ME14 4FB

- GUIDE PRICE £700,000 - £750,000
- Luxurious Fitted Kitchen/Breakfast Room
- Spacious Living and Entertaining Space
 - Fitted Wooden Shutters
 - Exclusive Gated Development
- Deceptive Three Bedroom Cottage
- Exceptional Views over the North Downs
- Quality En- Suite and Family Bathroom
- Secluded Garden and First Floor Balcony
 - Allocated Parking

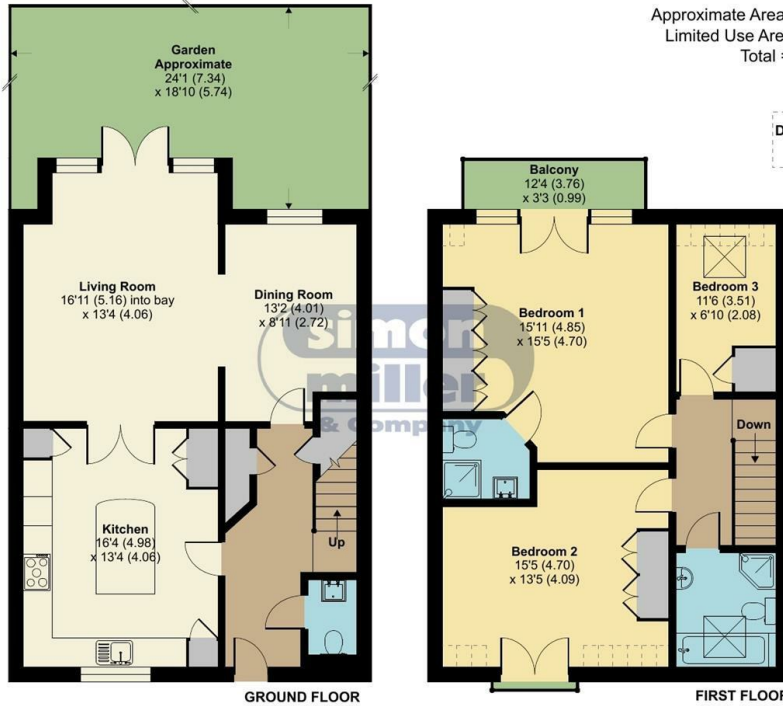
Guide Price £700,000 Freehold



Local Authority Maidstone
 Council Tax Band F
 EPC Rating C

Bearsted Views, St. Faiths Lane, Bearsted, Maidstone, ME14

Approximate Area = 1400 sq ft / 130. sq m
 Limited Use Area(s) = 24 sq ft / 2.2 sq m
 Total = 1424 sq ft / 132.2 sq m
 For identification only - Not to scale



RICS Certified Property Measurer
 Floor plan produced in accordance with RICS Property Measurement Standards incorporating International Property Measurement Standards (IPMS2 Residential). © nichecom 2024. Produced for Simon Miller & Company. REF: 1026740



Maidstone & The Weald Office
 11 Colman House, Colman Parade, King Street, Maidstone, Kent, ME14 1DJ

Contact
 01622 691255
 maidstonesales@simonmiller.co.uk

Agents Note: Whilst every care has been taken to prepare these particulars, they are for guidance purposes only. All measurements are approximate and for general guidance purposes only and whilst every care has been taken to ensure accuracy, they should not be relied upon and potential buyers/tenants are advised to recheck the measurements.