



39 Hillside, Findern, Derby, DE65 6AZ

£275,000



A nicely positioned two double bedroom detached bungalow occupying a generous plot and attractively being offered for sale with no upward chain.



39 Hillside, Findern, Derby, DE65 6AZ

£275,000



DIRECTIONS

Approaching Findern on Burton Road becoming Doles Lane, turn right onto Cromwell Avenue, then right again onto Hillside, follow the road to the left, as the road bends again to the left the property will be found on the left.

The gas centrally heated and UPVC double glazed accommodation currently comprises, an enclosed porch leading into a spacious formal hallway providing access to all rooms, front lounge with gas fire, dining kitchen to rear, main bedroom with fitted wardrobes and drawers, second double bedroom to the front and three piece bathroom suite. There is also a large loft space with excellent head height.

Externally, there is a decent frontage with blocked paved driveway, side garage (up and over doors to front and rear) and lawn with mature screening planting. The rear garden has a paved patio with a well-established garden beyond, shed and gated front access.

The village of Findern lies to the south-west of the city of Derby with excellent road links to the A38 and A50. Within the attractive village is a pretty village square with shop and attractive countryside walks. Nearby are the suburbs of Littleover and Mickleover providing a comprehensive range of shopping facilities. The nearby Mercia Marina provides a pleasant stop for a coffee, dining and shopping.

ACCOMMODATION

ENTRANCE PORCH

Main UPVC double glazed front door and window, inner door into:

HALLWAY

11'10" x 5'1" (3.61m x 1.55m)

Spacious providing access to all rooms and loft with pull down ladder and providing excellent head height.

LOUNGE

14'6" x 13' into bay (4.42m x 3.96m into bay)

A pleasant bay windowed lounge, UPVC double glazed window, flame gas fire with surround and hearth, media connections and radiator.

KITCHEN DINER

13'4" x 11' (4.06m x 3.35m)

A generous kitchen with space for a dining table and chairs, having an extensive range of fitted units with matching cupboard and drawer fronts, laminate work surfaces, part tiled walls, gas cooker and hob, washing machine and fridge freezer, UPVC double glazed windows and door to garden, radiator.

BEDROOM ONE

12'1" x 11'11" (3.68m x 3.63m)

A spacious principal bedroom with fitted wardrobes and drawers and dressing table, rear facing UPVC double glazed window and radiator.

BEDROOM TWO

11'11" x 9'11" (3.63m x 3.02m)

A second spacious double bedroom with front facing UPVC double glazed window and radiator.

BATHROOM

7'5" x 6'2" (2.26m x 1.88m)

Three piece suite comprising a triangular shaped bath with mains shower over and screen, wash basin and WC, tiled walls and floor, UPVC double glazed window, radiator.

OUTSIDE

Externally, there is a decent frontage with blocked paved driveway, side garage (up and over doors to front and rear) and lawn with mature screening planting. The rear garden has a paved patio with a well-established garden beyond, shed and gated front access.



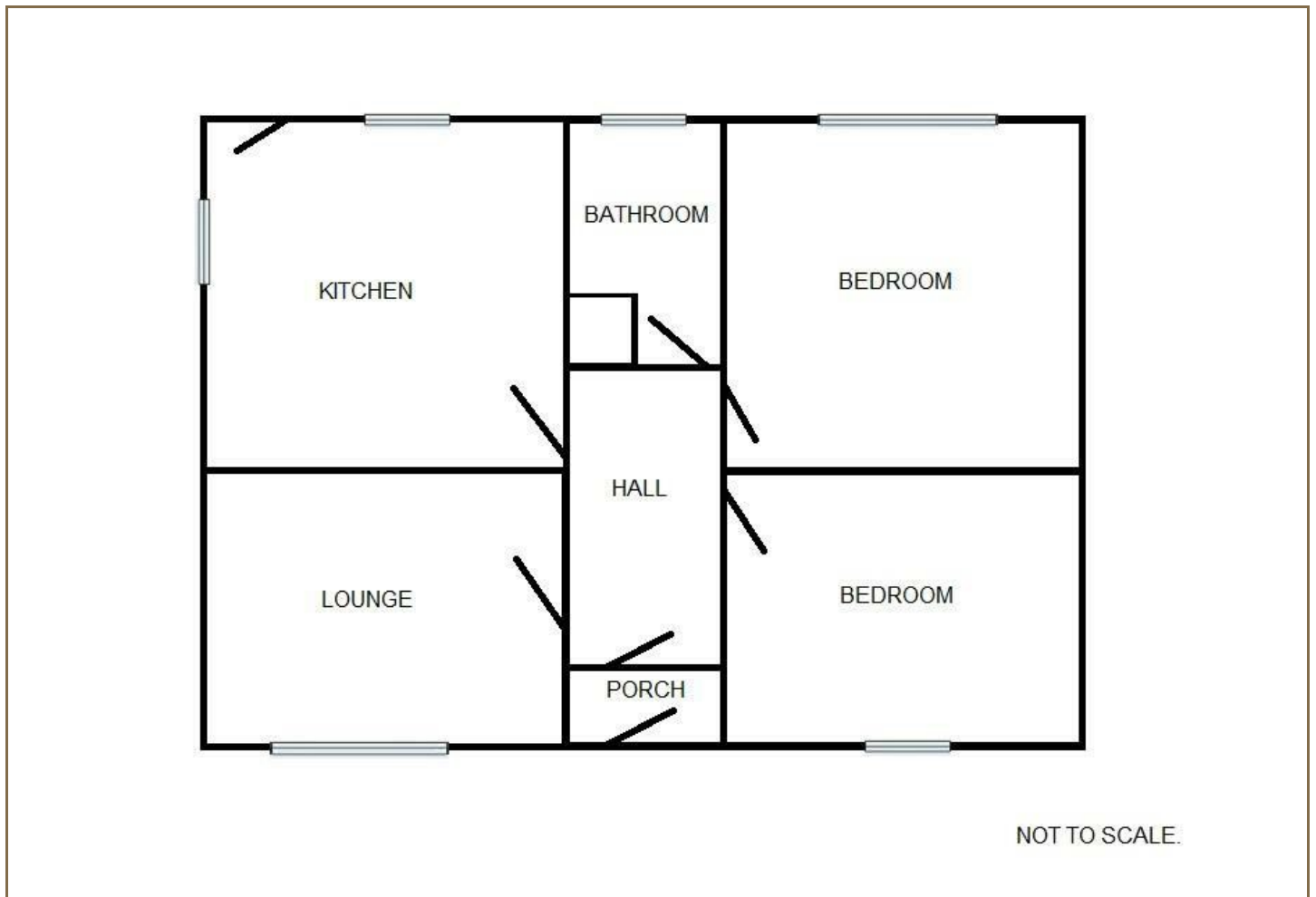




Road Map



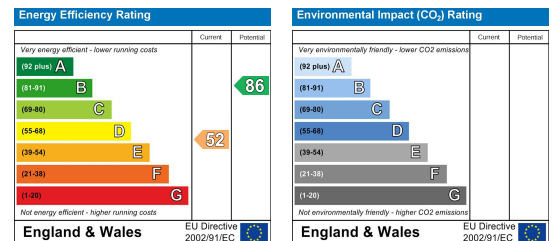
Floor Plan



Viewing

Please contact our Derby Office on 01332 383838 if you wish to arrange a viewing appointment for this property or require further information.

Energy Efficiency Graph



These particulars, whilst believed to be accurate are set out as a general outline only for guidance and do not constitute any part of an offer or contract. Intending purchasers should not rely on them as statements of representation of fact, but must satisfy themselves by inspection or otherwise as to their accuracy. No person in this firm's employment has the authority to make or give any representation or warranty in respect of the property. Boxall Brown & Jones believe is being wholly transparent about referral fees received from contractors and service providers. A comprehensive list of referral fees paid to Boxall Brown & Jones can be found at www.boxallbrownandjones.co.uk

boxallbrownandjones.co.uk

Oxford House, Stanier Way
Wyvern Business Park, Derby, DE21 6BF
01332 383838
sales@boxallbrownandjones.co.uk

The Studio, Queen Street
Belper DE56 1NR
01773 880788
belper@boxallbrownandjones.co.uk