

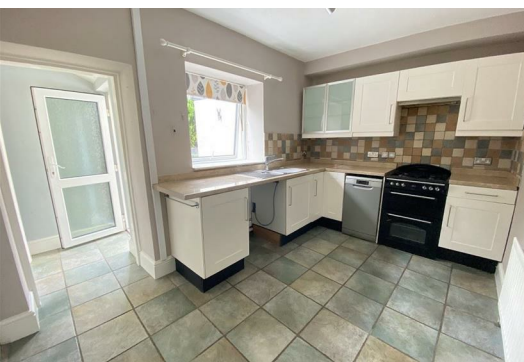


29 Tamworth Street, Duffield, Belper, DE56 4ER

Offers In The Region Of
£260,000

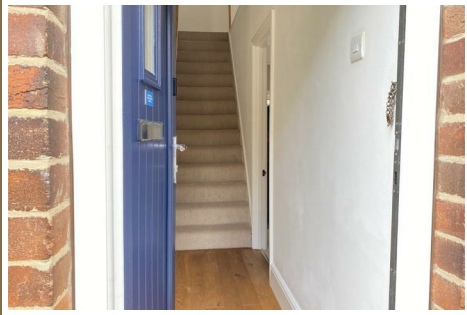


A most charming two bedroom cottage located a short distance from the centre of this vibrant and sought after village within close proximity to Derby city and also the Peak District.



29 Tamworth Street, Duffield, Belper, DE56 4ER

Offers In The Region Of £260,000



DIRECTIONS

Approaching from Derby, arrive in Duffield proceeding through the village centre taking the first principle left turning into Tamworth Street, where the property will be found on the left as the road bends to the right.

The cottage is also attractively offered for sale with immediate vacant possession and no upward chain.

An ideal property for the first time buyer or investor in either the private renter or growing AirBNB sectors.

Internally the property benefits from newly replaced glazing in UPVC frames and gas central heating via a 2024 installed combination boiler briefly comprising, entrance hallway with stairs to the first floor, cosy lounge with feature brick fireplace, dining kitchen, rear lobby and bathroom with three piece suite including a shower over bath. To the first floor there is a large main bedroom spanning the full width of the cottage and a generous second bedroom to the rear.

Externally there are charming front and rear gardens all beautifully presented and neatly landscaped. There is a garden store along with a substantial brick store accessed from the rear with double doors and shared, gated front access.

Tamworth Street is a one way vehicular road

with ease of pedestrian access into the vibrant village centre with an impressive range of local public houses, wine bar and restaurants along with cafe, grocery stores and post office. If required there are reputable primary schools as well as being home to the noteworthy Ecclesbourne secondary school and sixth form. Duffield also has its own golf, racquet and cricket clubs.

A delightful property and location.

ACCOMMODATION

GROUND FLOOR

ENTRANCE HALLWAY

Entering the property into a formal hallway through a UPVC double glazed front door, attractive wooden flooring, with carpeted stairs leading to the first floor, central heating radiator. Door into:

LOUNGE

12'8" x 9'6" (3.86m x 2.90m)

A cosy lounge featuring a revealed brick fireplace with a quarry tiled hearth, stone lintel and mantle, front facing UPVC double glazed window with Venetian blinds, meter cabinet with shelf, ceiling and wall lights, media connections and radiator. Door into:

DINING KITCHEN

11' x 8'1" (3.35m x 2.46m)

Appointed with a plentiful range of storage

and display cupboards and drawers with matching fronts, laminate work surfaces, tiled splashback, stainless steel one and half sink and drainer with chrome taps over, double oven and gas hob with an extractor fan over, slimline dishwasher and space for a washing machine, tiled floor, a UPVC double glazed window with deep sill and roller blind overlooks the rear garden, a deep understairs cupboard with two doors opens to reveal space for a fridge freezer along with further storage space and the combination boiler (installed 2024).

REAR LOBBY

With a continuation of the tiled floor from the kitchen, UPVC double glazed door to garden and door into:

BATHROOM

8'6" x 6'4" (2.59m x 1.93m)

Neatly appointed with a white three piece suite comprising a panelled bath with mains chrome shower over, chrome taps and glazed shower screen with surrounding walls

being tiled, wash basin and WC, wood effect vinyl flooring, UPVC double glazed window with roller blind, extractor fan and radiator.

FIRST FLOOR

LANDING

A carpeted landing with wooden handrail and spindles, access into both bedrooms and loft.

BEDROOM ONE

15'9" x 9'6" (4.80m x 2.90m)

Particularly spacious spanning the full width of the cottage and providing ample space for all bedroom furniture, twin chimney breast recess, carpeted, front facing UPVC double glazed window with Venetian blinds, ceiling fan light and double radiator.

BEDROOM TWO

10'10" x 8'1" (3.30m x 2.46m)

A generous second bedroom having a laminate floor, chimney recess suitable for a wardrobe, a UPVC double glazed window with deep sill and roller blind overlooks the rear garden, radiator.



OUTSIDE

Externally there are charming front and rear gardens all beautifully presented and neatly landscaped. There is a garden store along with a substantial brick store accessed from the rear with double doors and shared, gated front access.

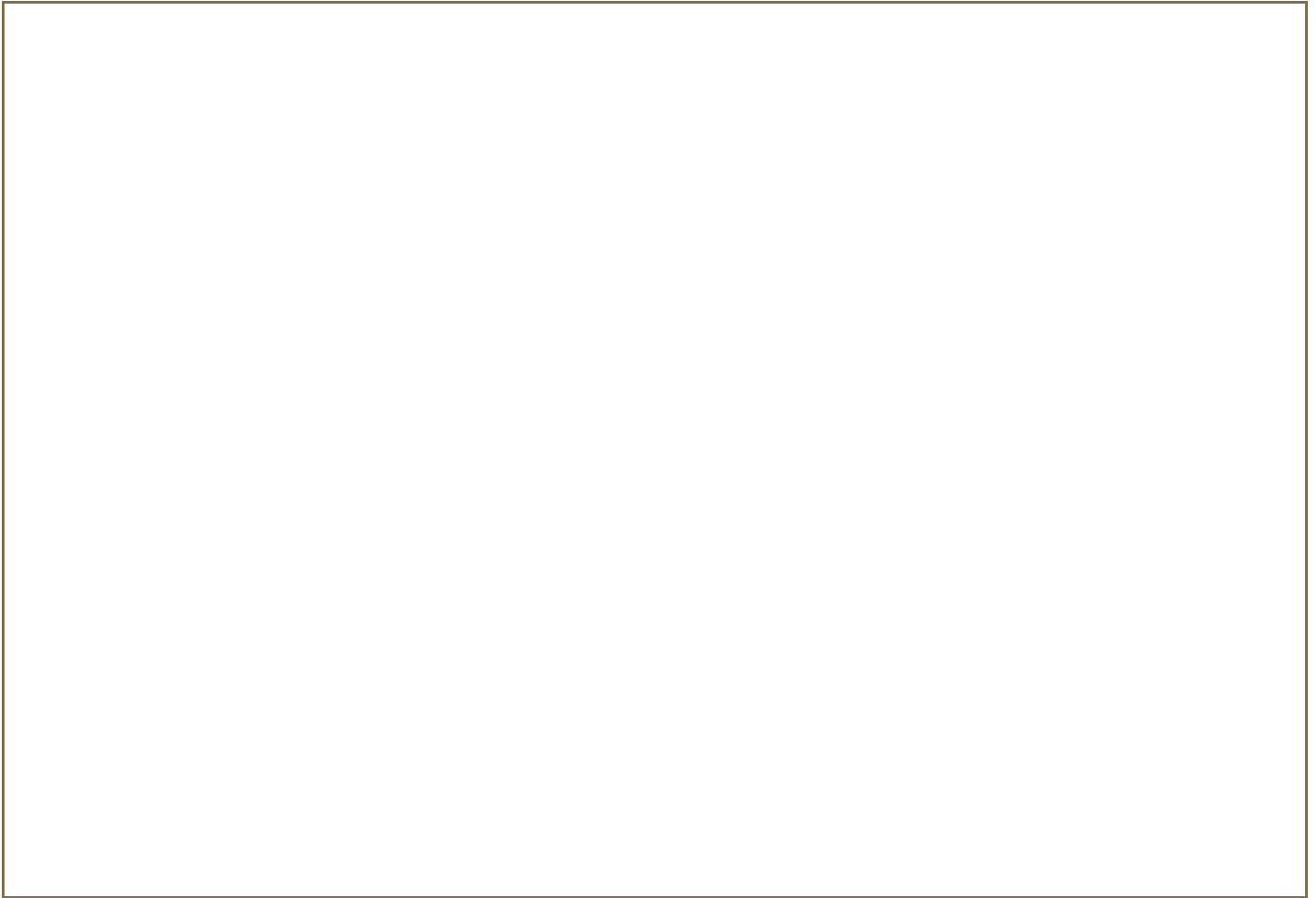




Road Map



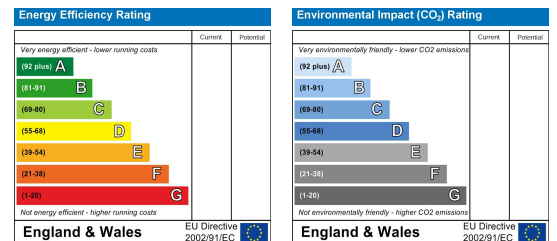
Floor Plan



Viewing

Please contact our Derby Office on 01332 383838 if you wish to arrange a viewing appointment for this property or require further information.

Energy Efficiency Graph



These particulars, whilst believed to be accurate are set out as a general outline only for guidance and do not constitute any part of an offer or contract. Intending purchasers should not rely on them as statements of representation of fact, but must satisfy themselves by inspection or otherwise as to their accuracy. No person in this firm's employment has the authority to make or give any representation or warranty in respect of the property. Boxall Brown & Jones believe is being wholly transparent about referral fees received from contractors and service providers. A comprehensive list of referral fees paid to Boxall Brown & Jones can be found at www.boxallbrownandjones.co.uk

boxallbrownandjones.co.uk

Oxford House, Stanier Way
Wyvern Business Park, Derby, DE21 6BF
01332 383838
sales@boxallbrownandjones.co.uk

The Studio, Queen Street
Belper DE56 1NR
01773 880788
belper@boxallbrownandjones.co.uk