



Stroude Road | Virginia Water | Surrey | GU25 4DB

£599,950

Freehold

Waterford's W
Residential Sales & Lettings

Stroude Road | Virginia Water
Surrey | GU25 4DB
£599,950

A traditional 1930's built three bedroom semi-detached family home backing onto open fields, situated in the sought after location of Virginia Water offering easy access to the local shops and main line station. Potential to further develop if required (subject to planning permission)

- Semi Detached Home
- Open Plan Kitchen/Dining Area
- Generous size rear garden backing onto fields
- Two bathrooms
- Set Over Three Floors
- Separate Lounge
- Driveway Parking for two cars
- Runnymede council tax band = D



3 Bedrooms Semi Detached Home



DESCRIPTION

Set in a popular residential area on the outskirts of Virginia Water is this attractive semi detached older style home that has enjoyed the conversion of its loft space to now provide an most appealing bright and spacious family home that now boasts generous size rooms carefully laid out over three floors.

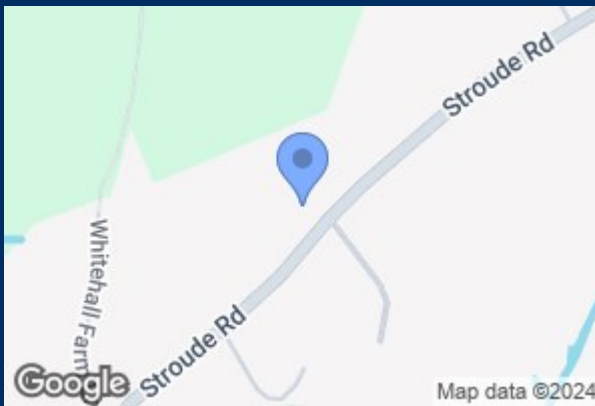
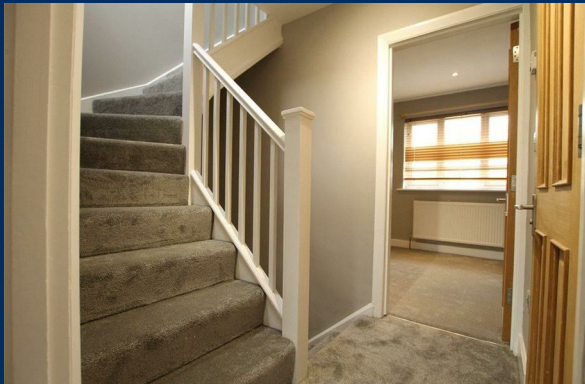
Upon entering the property you will find yourself in the entrance lobby. To the left is the lounge with a front aspect. To your right you will find yourself in the spacious well appointed kitchen / dining room that has enjoyed an extension. A cloakroom WC completes the accommodation to the ground floor. To the first floor are two double bedrooms and a well appointed family bathroom with shower cubicle and then to the third floor is the master suite comprising of a large double bedroom and en-suite bathroom. This comfortable room enjoys views towards the fields at the rear of its back garden.

OUTSIDE

To the front the property benefits from driveway parking for two cars. To the rear there is a covered deck which leads onto a lawned garden that measures in excess of 80ft, and is enclosed by shrubs and wood panel fencing backing onto open fields. There is also a useful log shed in the rear garden.

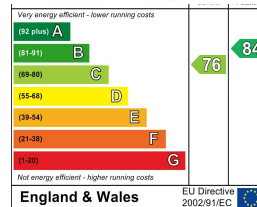
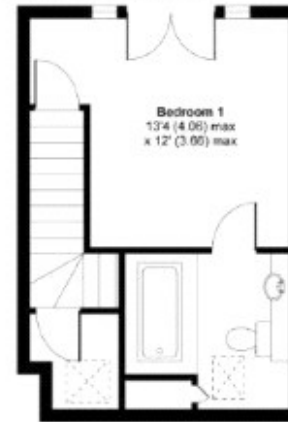
DIRECTIONS

From our offices in Chobham proceed to Sunningdale. At the junction with the London Rd turn right heading towards Egham. At the traffic lights turn right signposted to Virginia Water. Proceed through the village centre and over the railway line. At the traffic lights turn left on Stroude Lane.



Stroude Road, Virginia Water GU25

APPROX. GROSS INTERNAL FLOOR AREA 1094 SQFT / 102 SQM



32 High Street
Chobham
Surrey
GU24 8AA
01276 858589

chobham@waterfords.co.uk