



# illage Estates

Independent Estate Agents & Mortgage Advisors



*Gartcosh*

*4 Linlithgow Place*

*G69 8LL*

# 3 Bedroom Semi Detached Villa

Hallway • Lounge • Kitchen • W.C  
3 Bedrooms • Master En-Suite • Bathroom  
Rear Garden • Small Driveway

Village Estates are delighted to welcome to the market this beautiful 3 bedroom semi detached villa situated in the much sought after area of Gartcosh. Internally the property comprises of a welcoming hallway which leads to a fabulous size modern lounge which gives access to a modern fitted white gloss kitchen which includes a generous range of base and wall mounted units with integrated oven, hob, hood and space for dining, Kitchen gives access out to the rear garden. The lower level is complete with a bright W.C.

The upper level accommodates 2 generous size double bedrooms with bedroom one comprising of a lovely en-suite shower room. The accommodation is complete with a single bedroom and family bathroom comprising of a 3 piece white suite with shower over bath. The property also benefits from full double glazing and a system of gas central heating. Externally the property sits on a good size plot with a beautiful low maintenance garden to the rear with patio area complete with seating and outside dining area. There is off street parking situated to the front of the property along with a small driveway that has the potential to extend. Viewing is essential to fully appreciate the accommodation on offer on this stunning 3 bedroom semi detached villa.

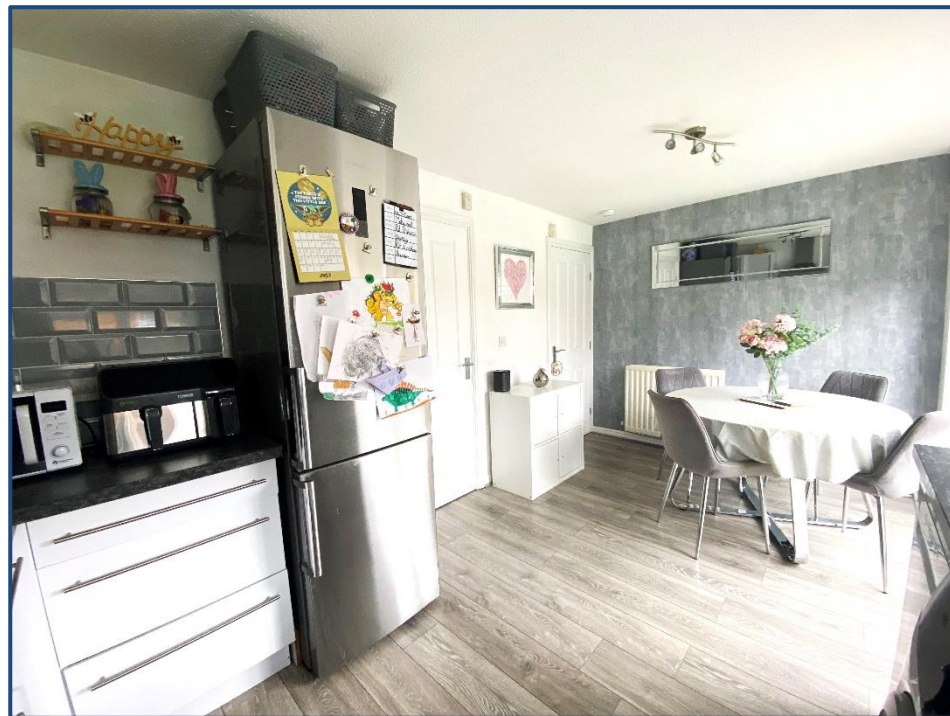
- Hallway
- Lounge 15'04" x 12'00"
- Kitchen 15'04" x 9'04"
- W.C
- Bedroom No. 1 11'02" x 8'02"
- Master En-suite
- Bedroom No. 2 10'05" x 9'00"
- Bedroom No. 3 7' 05" x 6'02"
- Bathroom

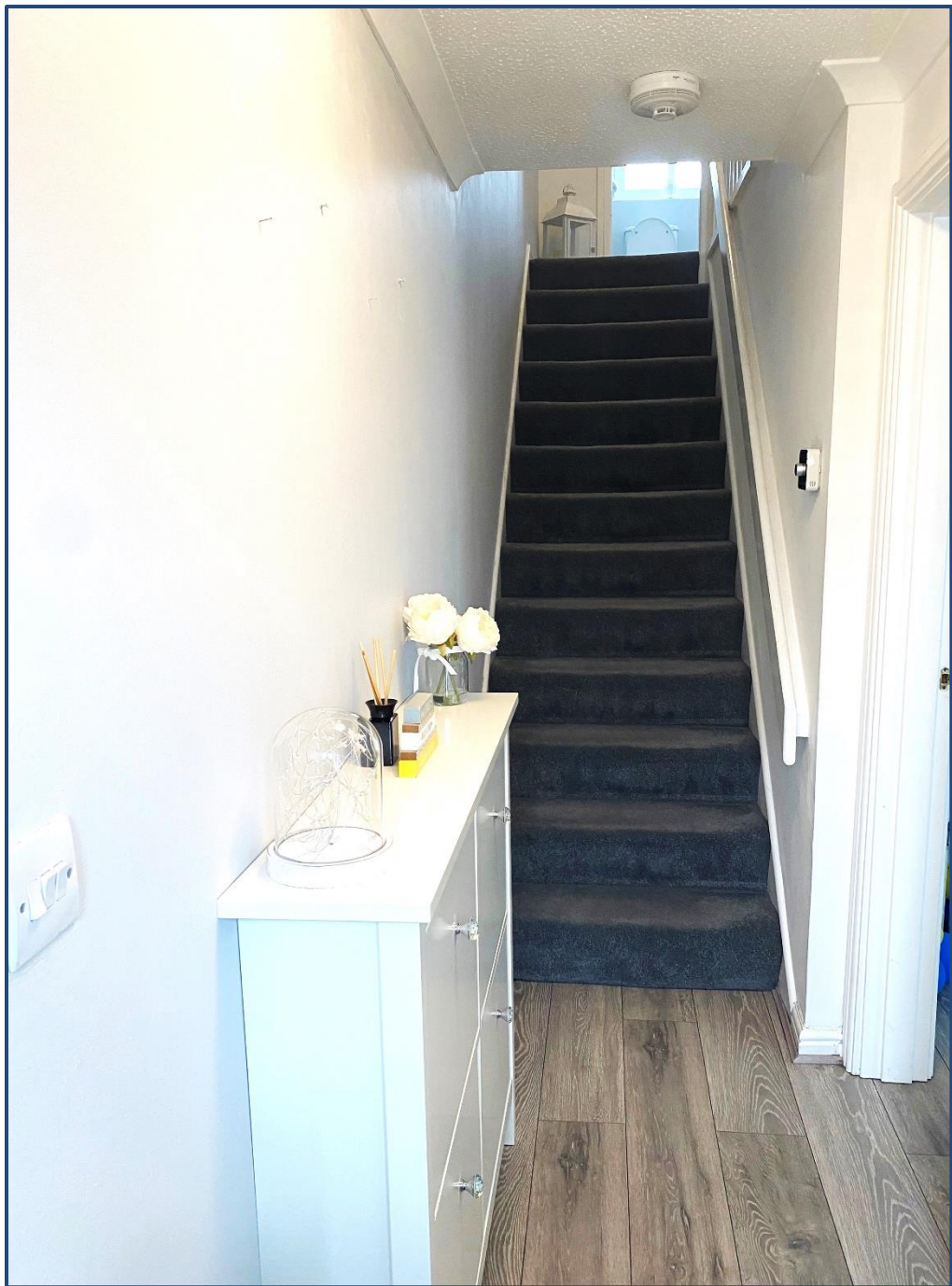
These particulars are believed to be correct and do not form part of any contract. Measurements have been taken using a sonic tape and may be subject to a small margin of error. Electrical/Gas fittings have not been tested and are assumed to be in working order. Photographs are included for information purposes only and it should not be assumed that any item is included in the purchase price of the property.

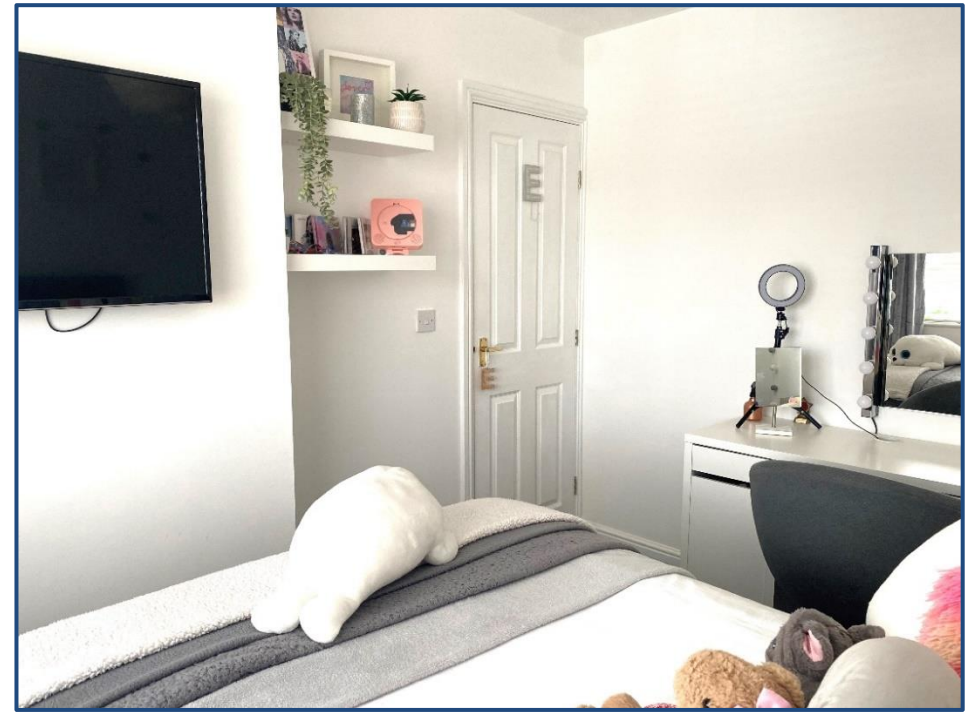
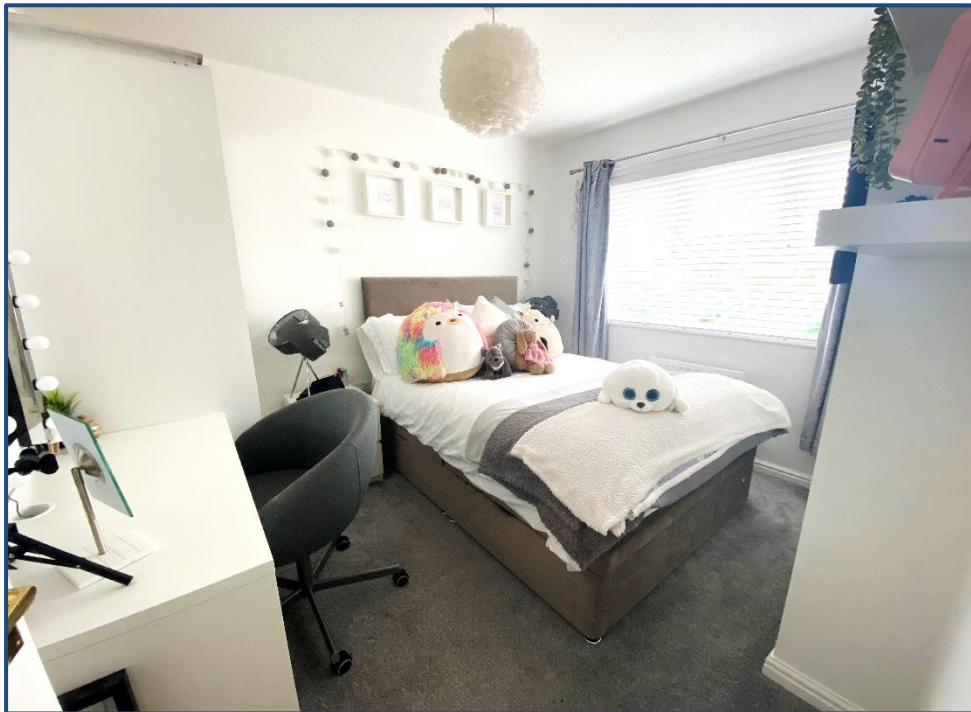
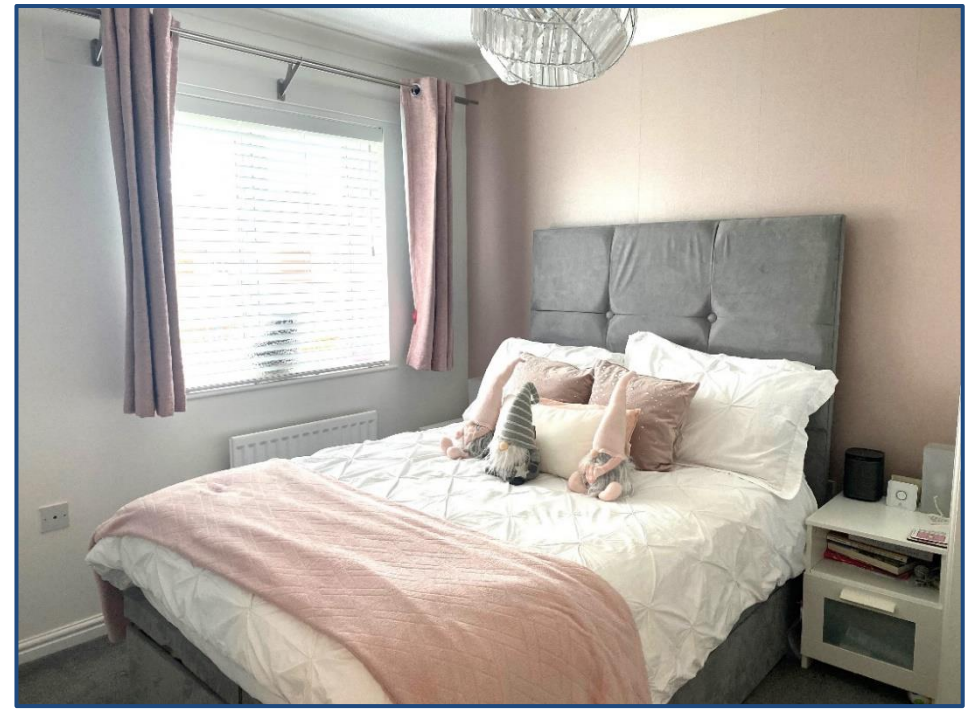
Photographs are included for information purposes only and it should not be assumed that any item is included in the purchase price of the property.

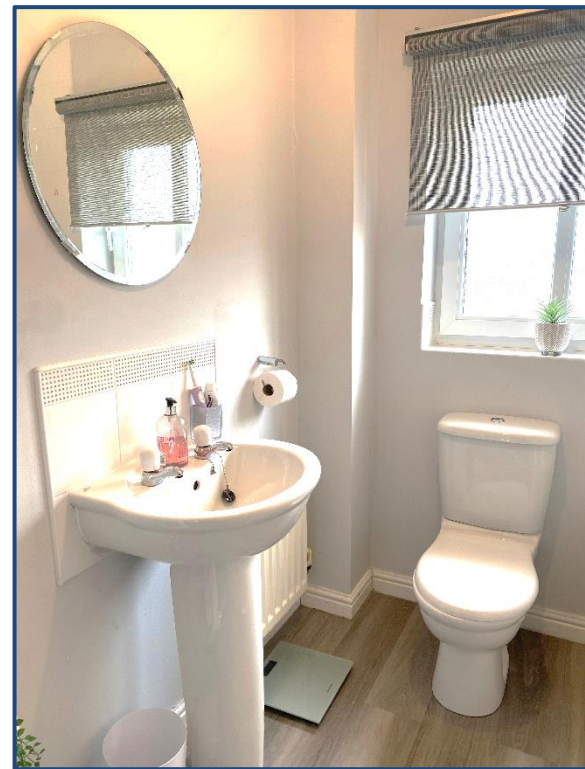
Ref. No. VEC24.













## **Selling Your Property !!**

**Contact us Now for a Free Valuation - We Offer a Full Sales & Marketing Package for a Very Competitive Fee**

## **Mortgage**

**Village Estates Mortgages offers a full range of Mortgage and Re-Mortgage facilities**

## **Home Reports, Surveys, Solicitors can also be arranged**

### **Office Opening Hours**

**9am – 5.30pm Monday – Friday**

**10am – 1pm Saturday**

**Please contact our Branch Tel. No during Saturday opening times for all enquiries**

**2 The Wynd, The Village, CUMBERNAULD**

**Zoopla.co.uk**

**Tel: 01236 636101**

**www.ve-ea.co.uk**

 **rightmove.co.uk**

**s1homes.com**