



Osbourne Road

APPROX. GROSS INTERNAL FLOOR AREA 887 SQ FT / 82.4 SQ M



LOWER GROUND FLOOR

GROUND FLOOR

Whilst every attempt has been made to ensure the accuracy of the floor plan contained here, measurements of doors, windows and rooms are approximate and no responsibility is taken for any error, omissions or misstatement. These plans are for representation purposes only as defined by RICS Code of Measuring Practice and should be used as such by any prospective purchaser. Specification no guarantee is given on the total square footage of the property if quoted on this plan. Any figure given is for initial guidance only and should not be relied on as a basis of valuation.



DAVIES & DAVIES ESTATE AGENTS

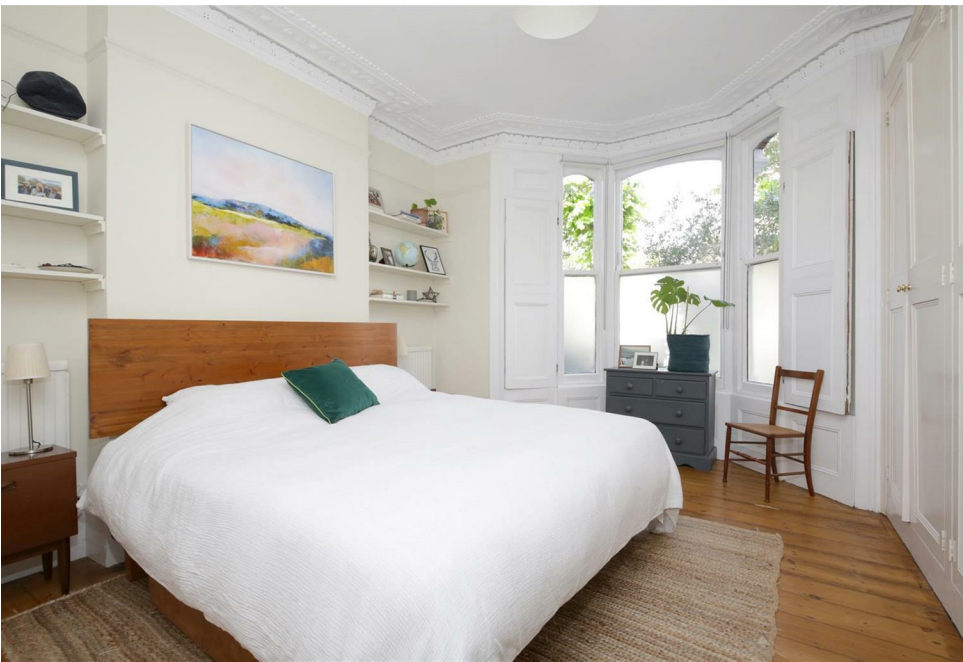
85 Stroud Green Road, Finsbury Park, London, N4 3EG

0207 272 0986 | info@daviesdavies.co.uk

www.daviesdavies.co.uk

OSBORNE ROAD

2 BEDROOM | 1 BATHROOM | FLAT



MATERIAL
INFORMATION:

- > EPC D
- > SHARE OF FREEHOLD
- > 996 YEAR LEASE
- > £0 GROUND RENT
- > £0 SERVICE CHARGE
- > COUNCIL TAX B

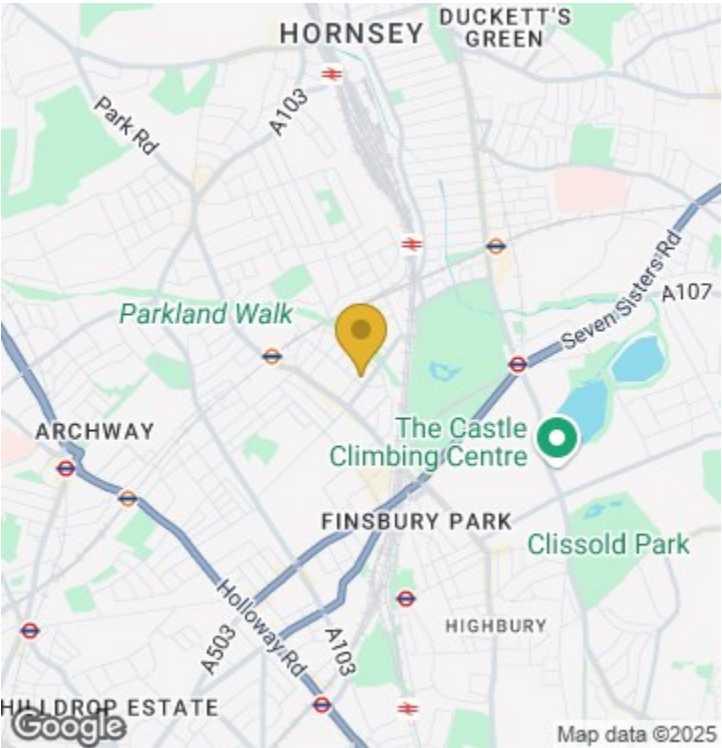
KEY FEATURES

- TWO BEDROOMS
- PRIVATE GARDEN
- SHARE OF FREEHOLD
- ORINGINAL PERIOD FEATURES
- END OF TERRACE
- 0.5 MILES FINSBURY PARK STATION

YOURS FOR
£775,000

The home is just 0.5 miles from Finsbury Park Station and within the catchment area of Stroud Green Primary School. The park and trendy Stroud Green Road, with its independent bars, restaurants, and shops, are only moments away.

SEE MORE
PROPERTIES
ONLINE



Energy Efficiency Rating		
	Current	Potential
Very energy efficient - lower running costs		
(92 plus) A		
(81-91) B		
(69-80) C		
(55-68) D		
(39-54) E		
(21-38) F		
(1-20) G		
Not energy efficient - higher running costs		
England & Wales	68	73
EU Directive 2002/91/EC		

Environmental Impact (CO ₂) Rating		
	Current	Potential
Very environmentally friendly - lower CO ₂ emissions		
(92 plus) A		
(81-91) B		
(69-80) C		
(55-68) D		
(39-54) E		
(21-38) F		
(1-20) G		
Not environmentally friendly - higher CO ₂ emissions		
England & Wales		
EU Directive 2002/91/EC		



BEDROOMS: 2



BATHROOMS: 1



RECEPTIONS: 1

