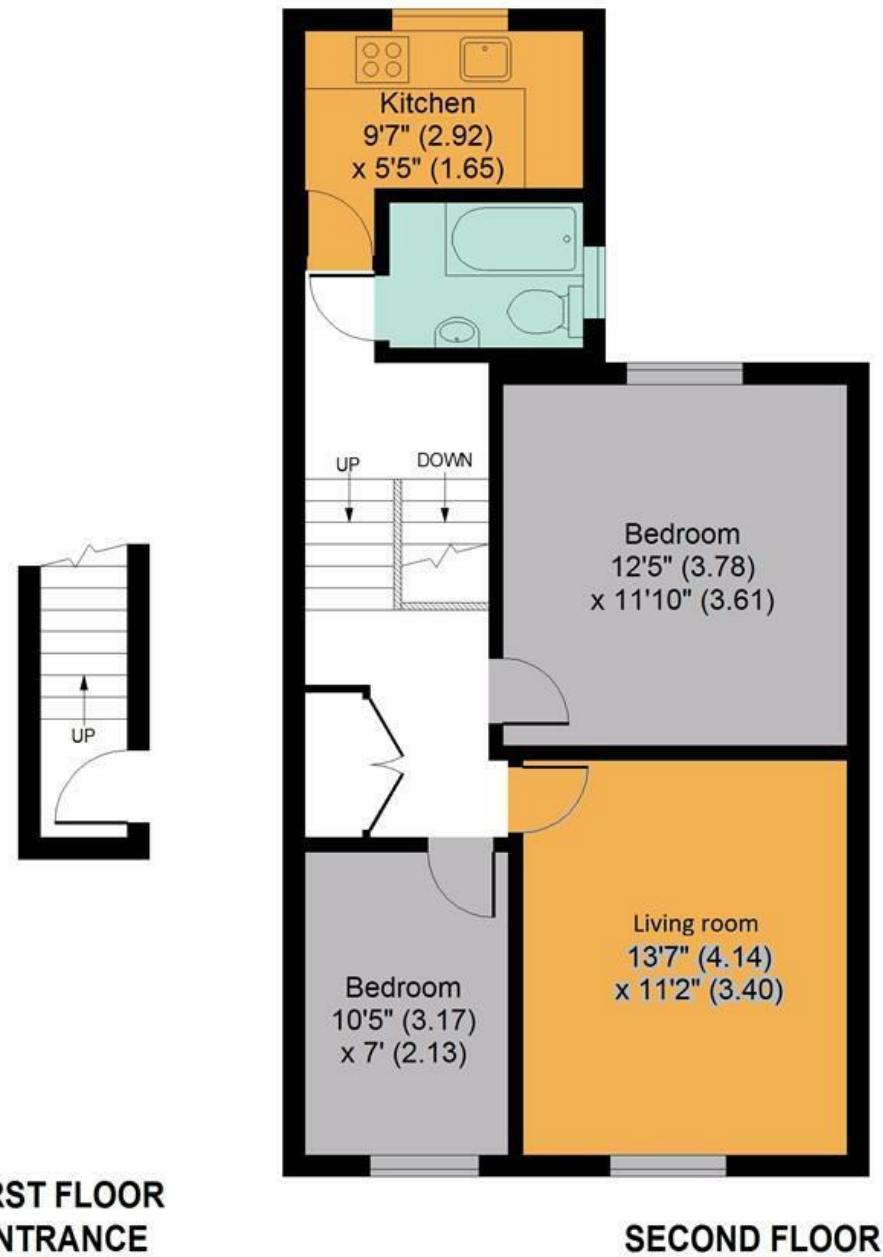




Oxford Road

APPROX. GROSS INTERNAL FLOOR AREA 640 SQ FT / 59.5 SQ M



Whilst every attempt has been made to ensure the accuracy of the floor plan contained here, measurements of doors, windows and rooms are approximate and no responsibility is taken for any error, omissions or misstatement. These plans are for representation purposes only as defined by RICS Code of Measuring Practice and should be used as such by any prospective purchaser. Specification no guarantee is given on the total square footage of the property if quoted on this plan. Any figure given is for initial guidance only and should not be relied on as a basic of valuation.



DAVIES & DAVIES ESTATE AGENTS

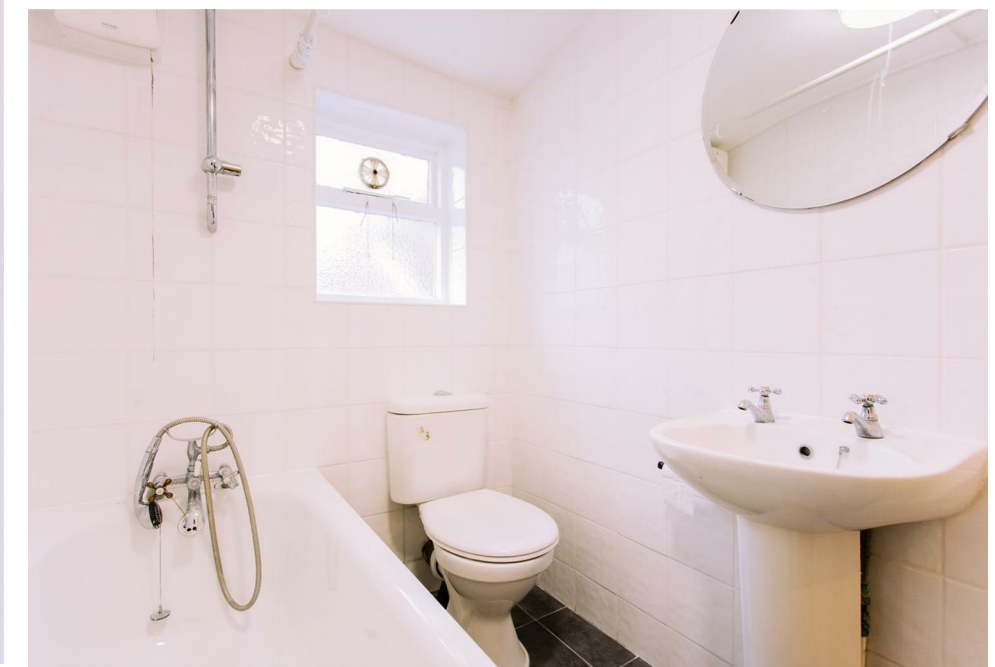
85 Stroud Green Road, Finsbury Park, London, N4 3EG

0207 272 0986 | info@daviesdavies.co.uk

www.daviesdavies.co.uk

OXFORD ROAD

2 BEDROOM | 1 BATHROOM | FLAT



MATERIAL INFORMATION:

COUNCIL TAX BAND:

C
HARINGEY

DEPOSIT AMOUNT:

£1,961*

CONTRACT TERM

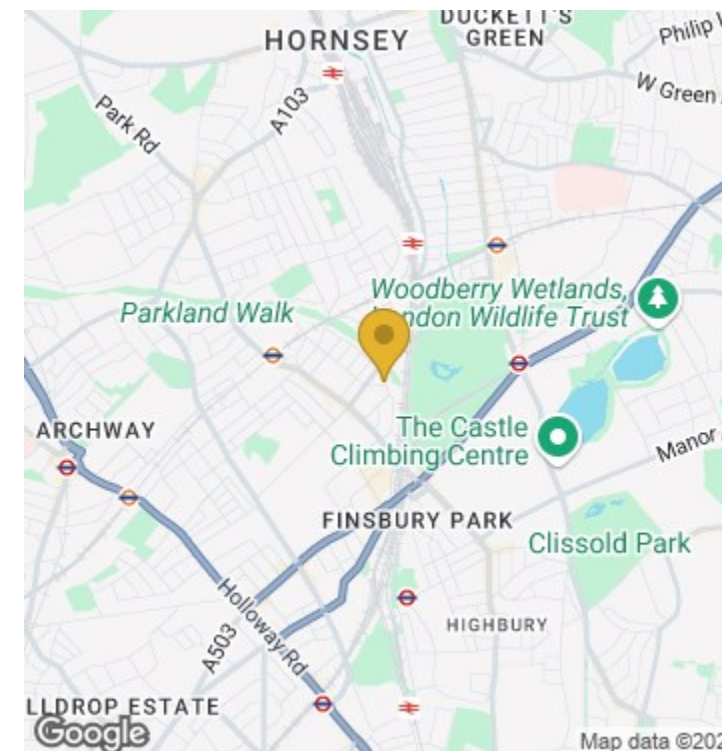
12 MONTHS

*DEPOSIT AMOUNT WILL BE THE EQUIVALENT TO 5 WEEKS RENT, IF THE RENT AMOUNT IS RENEGOTIATED THEN THE DEPOSIT WILL ADJUST ACCORDINGLY.

KEY FEATURES

- 2 DOUBLE BEDROOMS
- TOP FLOOR FLAT
- UNFURNISHED
- AVAILABLE 29TH OCTOBER
- EPC RATING D
- 0.4 MILES FROM FINSBURY PARK STATION

YOURS FOR
£1,700 PCM



| Energy Efficiency Rating | | Current | Potential |
|---|--|-------------------------|-----------|
| Very energy efficient - lower running costs | | | |
| (92 plus) A | | | |
| (81-91) B | | | |
| (69-80) C | | | |
| (55-68) D | | 64 | 70 |
| (39-54) E | | | |
| (21-38) F | | | |
| (1-20) G | | | |
| Not energy efficient - higher running costs | | | |
| England & Wales | | EU Directive 2002/91/EC | |

| Environmental Impact (CO ₂) Rating | | Current | Potential |
|---|--|-------------------------|-----------|
| Very environmentally friendly - lower CO ₂ emissions | | | |
| (92 plus) A | | | |
| (81-91) B | | | |
| (69-80) C | | | |
| (55-68) D | | 57 | 64 |
| (39-54) E | | | |
| (21-38) F | | | |
| (1-20) G | | | |
| Not environmentally friendly - higher CO ₂ emissions | | | |
| England & Wales | | EU Directive 2002/91/EC | |

- BEDROOMS: 2
- BATHROOMS: 1
- RECEPTIONS: 1

