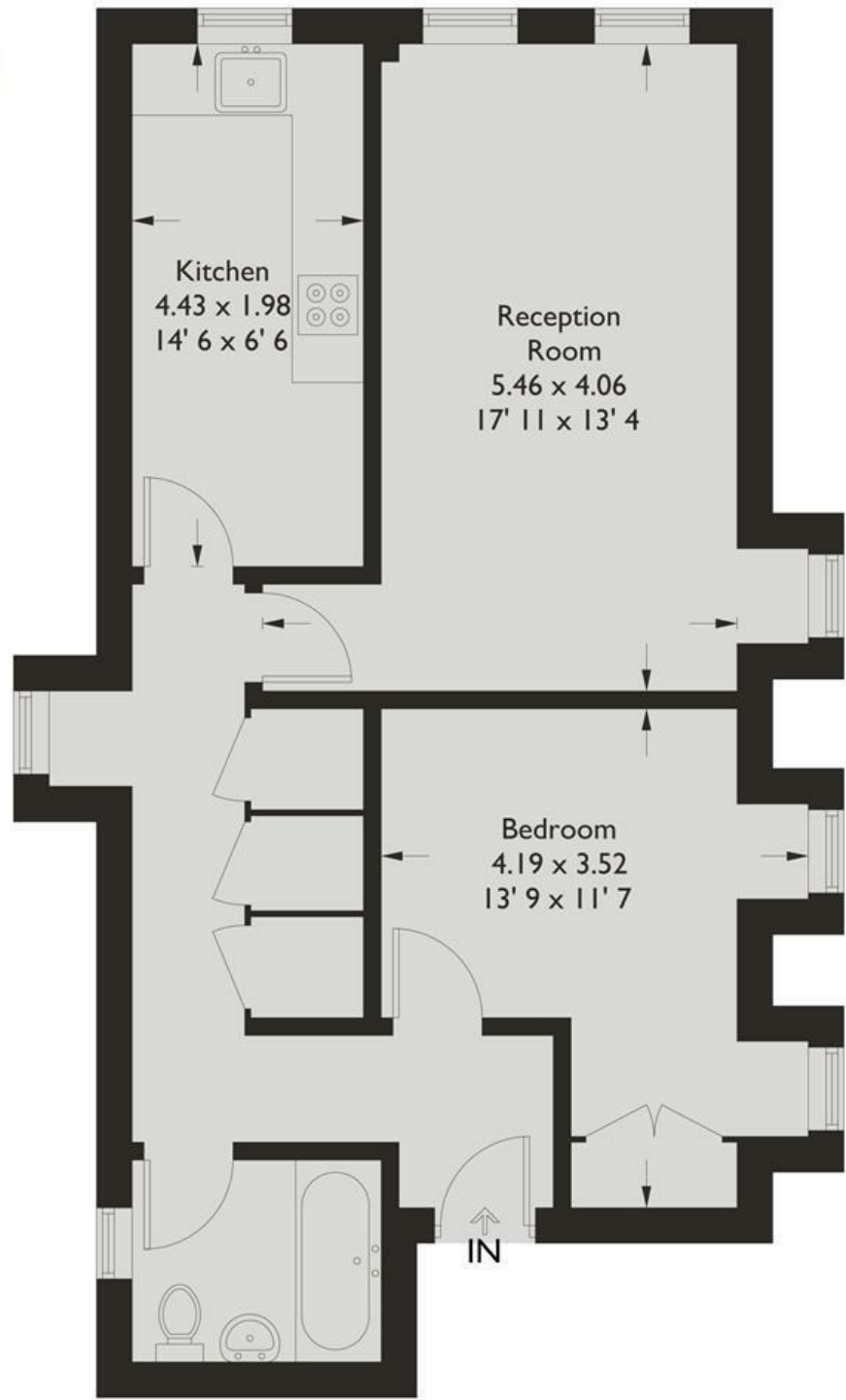




590 SqFt Interior



Third Floor

This plan is not to scale and must be used as layout guidance only. All measurements and areas are approximate and should not be relied upon to provide accurate information. This plan must not be relied upon when making property valuations, design considerations or any other such relevant decisions. We accept no responsibility or liability (whether in contract, tort or otherwise) in relation to any loss whatsoever arising from or in connection with any use of this plan or the adequacy, accuracy or completeness of it or any information within it.



DAVIES & DAVIES ESTATE AGENTS

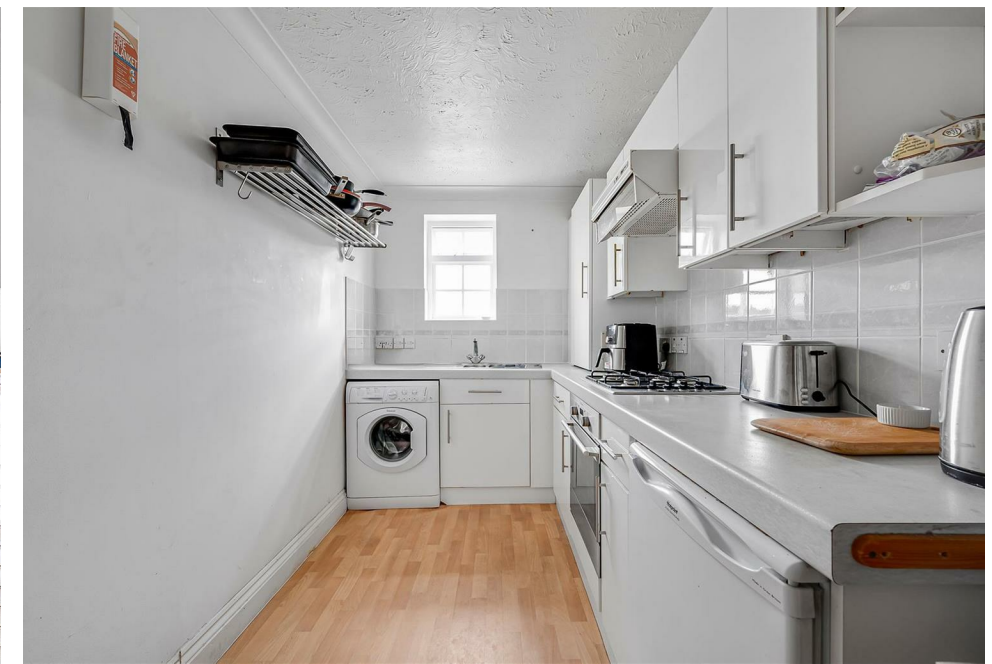
85 Stroud Green Road, Finsbury Park, London, N4 3EG

0207 272 0986 | info@daviesdavies.co.uk

www.daviesdavies.co.uk

STAPLETON HALL ROAD

1 BEDROOM | 1 BATHROOM | FLAT



MATERIAL INFORMATION:

> £1600.00

> £1846.00 DEPOSIT

> EPC D

> COUNCIL TAX BAND C

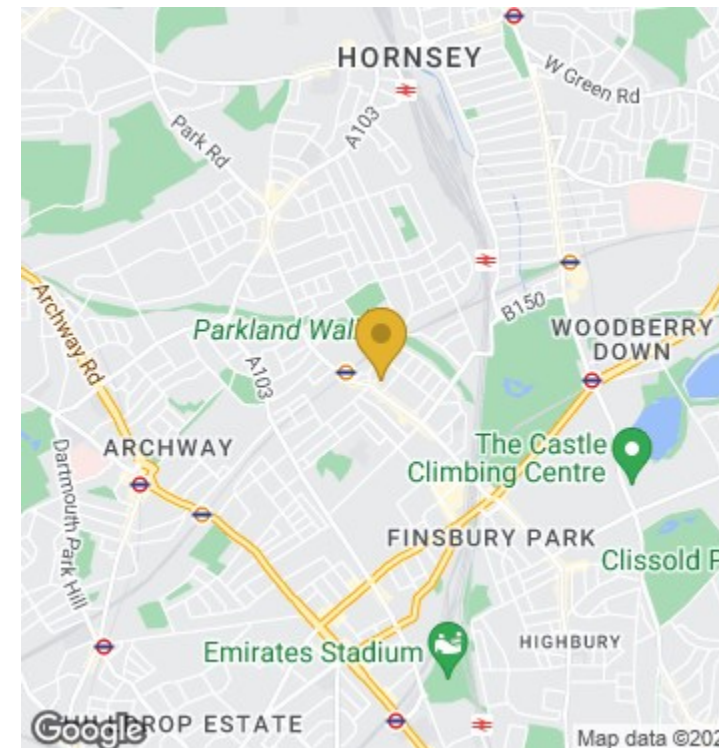
KEY FEATURES

- 1 DOUBLE BEDROOM
- FURNISHED
- AVAILABLE 9TH AUGUST
- SEPARATE KITCHEN
- EPC D
- 0.6 MILES TO FINSBURY PARK STATION

**YOURS FOR
£1,600 PCM**

Welcome to this charming property located on Stapleton Hall Road in the sought-after area of Finsbury Park. This delightful flat boasts a spacious reception room, perfect for entertaining guests or simply relaxing after a long day.

Situated in a popular location, you'll have easy access to a variety of amenities, including shops, restaurants, and green spaces. Whether you're looking for a peaceful retreat or a vibrant city life, this property offers the best of both worlds.



Energy Efficiency Rating	
Current	Potential
Very energy efficient - lower running costs	
(92 plus) A	
(81-91) B	
(69-80) C	
(55-68) D	
(39-54) E	
(21-38) F	
(1-20) G	
Not energy efficient - higher running costs	
67	75
EU Directive 2002/91/EC	

Environmental Impact (CO ₂) Rating	
Current	Potential
Very environmentally friendly - lower CO ₂ emissions	
(92 plus) A	
(81-91) B	
(69-80) C	
(55-68) D	
(39-54) E	
(21-38) F	
(1-20) G	
Not environmentally friendly - higher CO ₂ emissions	
66	74
EU Directive 2002/91/EC	

- BEDROOMS: 1
- BATHROOMS: 1
- RECEPTIONS: 1

