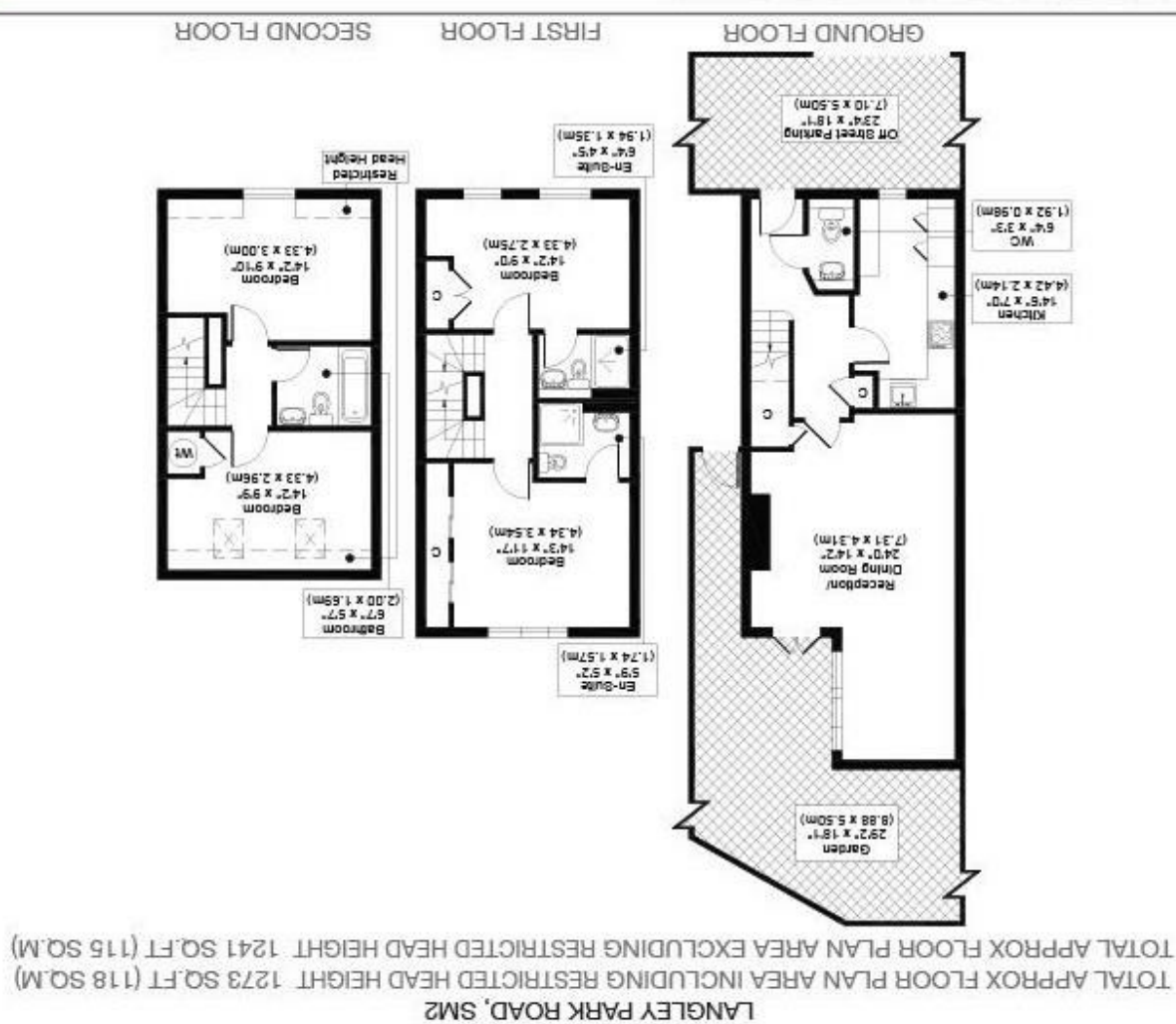


All measurements, walls, doors, windows, fittings and their appliances, their size and locations are shown conventionally and are approximate only and cannot be regarded as being a representation either by the seller or his agent.



GUIDE PRICE: £675,000 - £700,000

LOCATED ON THE SOUGHT-AFTER LANGLEY PARK ROAD IN SUTTON, THIS CHARMING TOWNHOUSE OFFERS AN EXCELLENT OPPORTUNITY FOR FAMILIES AND PROFESSIONALS ALIKE. BOASTING FOUR GENEROUSLY SIZED BEDROOMS AND THREE WELL-APPOINTED BATHROOMS, THE PROPERTY PROVIDES AMPLE SPACE FOR COMFORTABLE MODERN LIVING.

THE INTERIOR IS PRESENTED IN LOVELY CONDITION THROUGHOUT, COMBINING CONTEMPORARY DESIGN WITH A WARM AND WELCOMING FEEL. EACH BEDROOM OFFERS A PEACEFUL RETREAT, WHILE THE BATHROOMS ARE FITTED WITH MODERN FIXTURES AND FINISHES TO ENSURE CONVENIENCE FOR BUSY HOUSEHOLDS.

A PARTICULAR HIGHLIGHT IS THE PARKING PROVISION, WITH TWO SPACES AVAILABLE—ONE ON THE DRIVEWAY AND ANOTHER WITHIN A GATED DEVELOPMENT—AN INCREASINGLY RARE BENEFIT IN SUCH A DESIRABLE LOCATION.

THE PROPERTY IS IDEALLY POSITIONED WITHIN A VIBRANT COMMUNITY, WITH LOCAL AMENITIES, PARKS, AND WELL-REGARDED SCHOOLS ALL CLOSE BY, MAKING IT AN EXCELLENT CHOICE FOR FAMILY LIFE.

- 4 BEDROOMS
- 3 BATHROOMS
- SEPARATE KITCHEN
- 2 PARKING SPACES
- LOVELY CONDITION
- CLOSE To AMENITIES
- EPC RATING C
- COUNCIL TAX BAND F

