



www.centro.plc.uk | Telephone 020 8401 5000  
 www.christiesworld.com | Telephone 020 8643 7777

MAYFAIR OFFICE.CO.UK

onTheMarket.com

zoopla.co.uk

rightmove

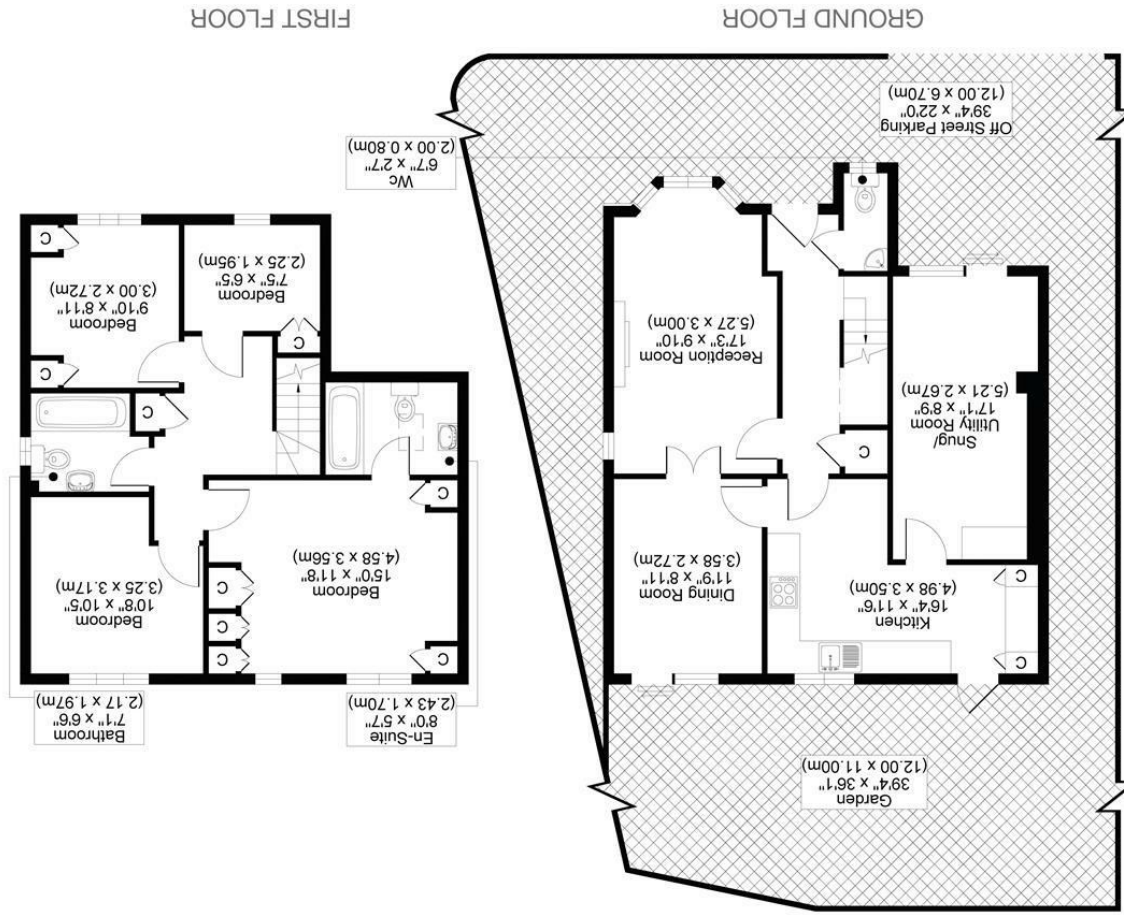
RICS

The Property Ombudsman

CHRISTIES

optica MEDIA optimedia.co.uk

All measurements, walls, doors, windows, fittings and their appliances, their size and locations are shown conventionally and are approximate only and cannot be regarded as being a representation either by the seller or his agent.



RIVERHEAD DRIVE, SM2  
 TOTAL APPROX FLOOR PLAN AREA 1309 SQ.FT (122 SQ.M)



CHRISTIES





**\*\*GUIDE PRICE £800,000 - £850,000\*\***

IDEALLY LOCATED FOR LOCAL SHOPS, OUTSTANDING SCHOOLS AND TRANSPORT FACILITIES, CHRISTIES ARE PROUD TO PRESENT THIS ABSOLUTELY STUNNING 4-BEDROOM DETACHED FAMILY HOME JUST WAITING TO BE VIEWED.

THE GROUND FLOOR BENEFITS FROM LOUNGE WITH A LOVELY BAY WINDOW LEADING TO THE DINING ROOM WHICH ENJOYS BEAUTIFUL VIEWS OVER THE STUNNING REAR GARDEN. THE KITCHEN OFFERS PLENTY OF FITTED UNITS FOR STORAGE AS WELL AS ACCESS TO THE SNUG, PERFECT FOR FAMILIES!

ON THE FIRST FLOOR YOU ARE PRESENTED WITH A SPACIOUS LANDING GIVING ACCESS TO ALL FOUR BEDROOMS MASTER BENEFITING FROM A MODERN ENSUITE AND THE FAMILY BATHROOM.

WHEN IT COMES TO PARKING THE PROPERTY ALSO OFFERS PARKING FOR MULTIPLE CARS TO THE FRONT.

FOR MORE INFORMATION, CONTACT OUR EXPERIENCED SALES TEAM ON 020 8661 5187.

- MASTER EN-SUITE
- DETACHED HOME
- SOUGHT AFTER LOCATION
- COUNCIL TAX BAND F
- EPC RATING D

