



Kenton Close | Frimley | Camberley | GU16 8LU

Price Guide £425,000 Freehold



Kenton Close | Frimley
Camberley | GU16 8LU
Price Guide £425,000

This two bedroom detached bungalow is situated in a pleasant cul-de-sac location and although requiring a degree of updating, it enjoys a 55ft secluded garden and has no onward chain.

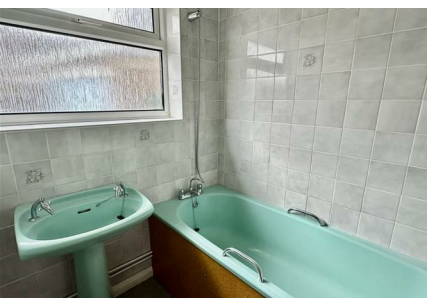
- Detached bungalow
- Bathroom
- Kitchen/breakfast room
- Detached garage
- Two double bedrooms
- Separate cloakroom
- Secluded garden
- No onward chain

Accommodation

This well balanced two bedroom detached bungalow has a front door opening to an entrance hall, a door opens to a 19ft front aspect living room . The kitchen overlooks the rear garden, and is fitted with a range of cabinets, with appliances space and a built-in table and bench seating, a door leads to the garden. Two double bedrooms, are served by a bathroom and separate cloakroom. NB: The property is unfurnished and would benefit from updating and redecoration, to show the potential, several images are CGI's (computer generated images)



Secluded garden



Outside

The bungalow is approached by a driveway with parking for 2 to 3 cars and leads to a detached single garage. A timber gate leads to the rear garden and this enjoys a secluded outlook with a 55ft wide level lawn and a variety of fruit trees and shrubs.

Location

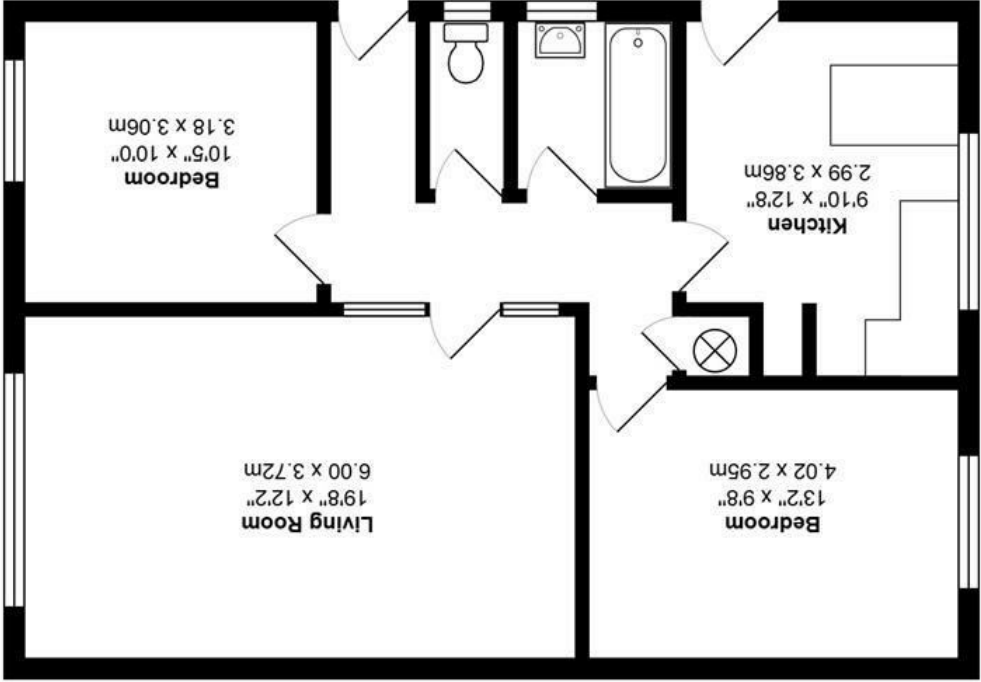
Located close to the picturesque Tomlins Pond, the property is located in a small cul-de-sac and convenient for Frimley and Camberley High Streets, which are only a short drive away, these offer a wealth of shops and restaurants, whilst the commuter has easy access to the M3, A331 and the A325 serving M25, London and the South Coast.



27 High Street
Camberley
Surrey
GU15 3RB
01276 66566
rley@waterfords.co.uk

Energy Efficiency Rating	
Current	Potential
79	56

Kenton Close, Frimley, Camberley, GU16 8LU



Total Area: 897 ft² ... 83.3 m²

All measurements are approximate and for display purposes only

