



Corfe Gardens | | Frimley | GU16 8XN

Price Guide £700,000 Freehold

Waterford's W
Residential Sales & Lettings

Corfe Gardens |
Frimley | GU16 8XN
Price Guide £700,000

This well presented and extended home is located in a quiet cul-de-sac and enjoys a 19ft L-shaped Kitchen/Breakfast room and two generously sized reception room. The four double bedrooms have an ensuite and family bathroom.

- 4 Double bedrooms
- 19ft L-shaped Kitchen/Breakfast Room
- Family Room/Study
- West facing garden
- Ensuite bathroom
- Living Room
- Cul-de-sac location
- Tomlinscote Catchment

Accommodation

This well presented and extended home is approached by an entrance hall with a downstairs cloakroom, two generously sized reception rooms are on either side of the hallway and the hall opens to the impressive 19ft L-shaped Kitchen/Breakfast room with French doors to the garden and the Kitchen is fitted with a excellent range of shaker styled cabinets, the Kitchen is complemented by a separate Utility room. Upstairs the spacious landing leads to four double bedrooms, the main bedroom with a walk-in wardrobe and served by an ensuite bathroom and the remaining bedrooms have a family bathroom.



Cul-de-sac



Outside

The property has a driveway for at least two cars with a lawned area to the side. The rear garden enjoys a westerly aspect with a full width patio and a level lawn enclosed by timber fencing.

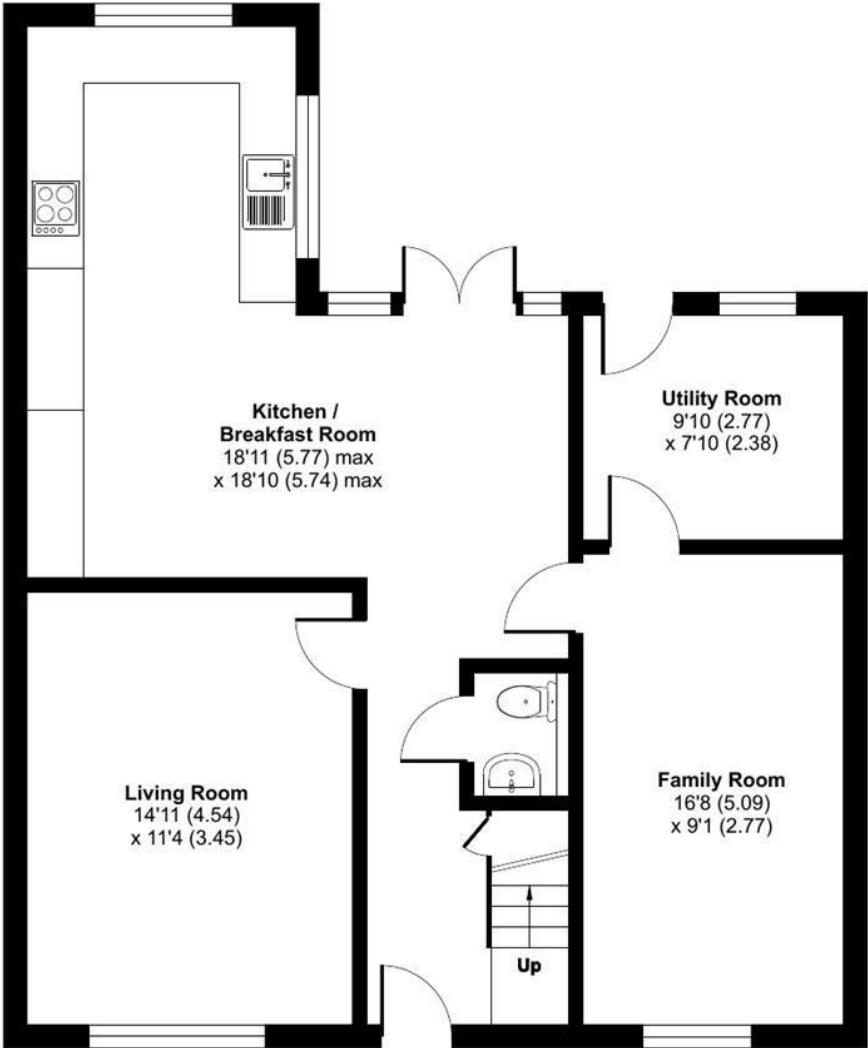
Location

Located in a cul-de-sac on the edge of the favoured Paddock Hill development and within easy reach of highly regarded schools & within close proximity of Tomlins Pond & Frimley Park Hospital. Frimley High Street with shops, restaurants & station is minutes away. It benefits from excellent transport links, including the A30, M3 and is a short drive from Farnborough Main Station which serves London Waterloo in 38 minutes.

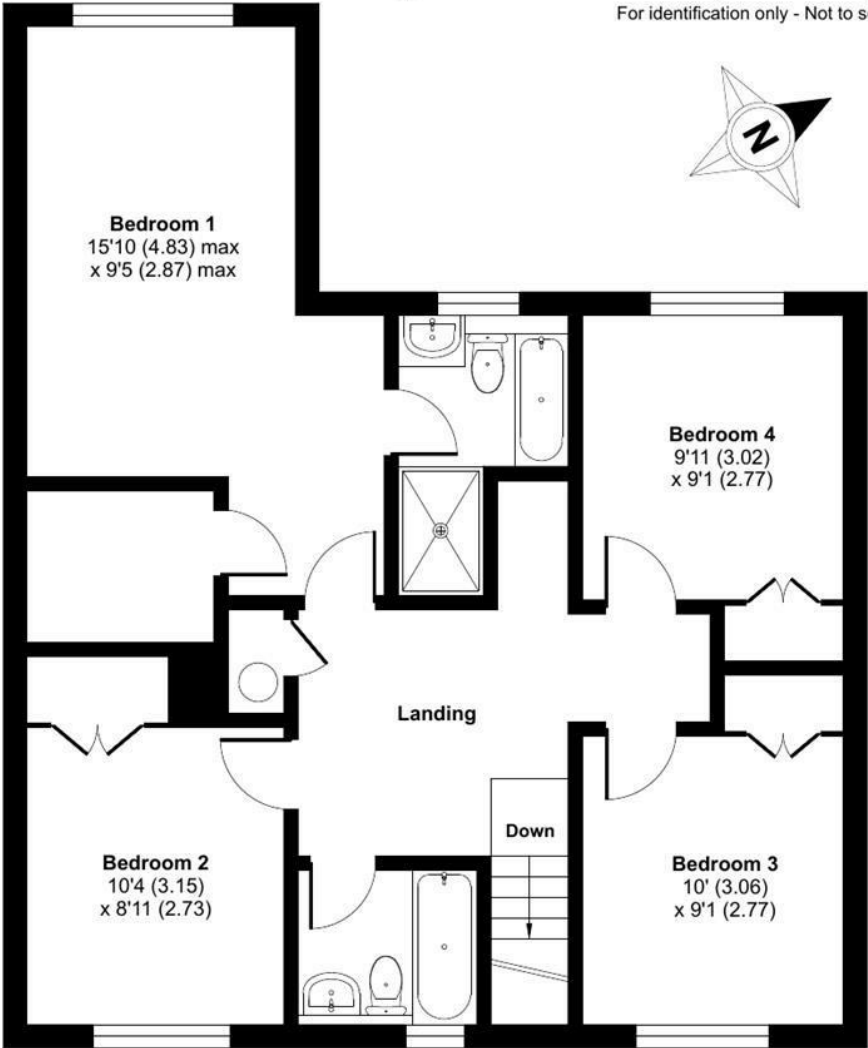


Corfe Gardens, Frimley, Camberley, GU16

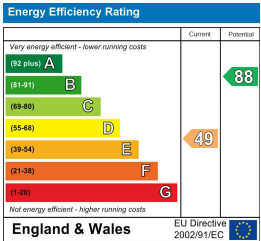
Approximate Area = 1590 sq ft / 147.7 sq m
For identification only - Not to scale



GROUND FLOOR



FIRST FLOOR



Floor plan produced in accordance with RICS Property Measurement 2nd Edition, Incorporating International Property Measurement Standards (IPMS2 Residential). © nchecon 2025. Produced for Waterfords. REF: 1286366

Waterfords
Residential Sales & Lettings

27 High Street
Camberley
Surrey
GU15 3RB
01276 66566
camberley@waterfords.co.uk