



The Ridings | | Frimley | GU16 9QZ

Price Guide £775,000 Freehold

*Waterford's* W  
Residential Sales & Lettings



## The Ridings | Frimley | GU16 9QZ Price Guide £775,000

This deceptively spacious home occupies a secluded 5th of an acre plot and has accommodation approaching 2,000 sq. feet. It is situated conveniently for Tomlinscote and Ravenstone schools. No onward chain.

- Accommodation of 2,000 sq. foot
- Ensuite bathroom
- Sitting room
- 5th of an acre plot
- 5 bedrooms
- Large living/dining room
- Refitted kitchen and utility room
- Detached double garage

### Description

This deceptively spacious home has flexible accommodation over two floors. The entrance hall with a downstairs cloakroom has double doors to the spacious and split level living/dining room, this enjoys an open fire place and patio doors to the garden and glazed doors open to a sitting room which gives access to the refitted kitchen with a excellent range of grey cabinets and a range on integrated appliances, the kitchen is served by a separate utility room. The main bedroom is on the ground floor served by a large refitted ensuite bathroom. Upstairs are four well proportioned bedrooms and a white bathroom suite.





No onward chain



## Outside

The property is tucked away at the end of a private driveway and enjoys a secluded 1/5th of an acre plot, the driveway has parking for several cars with a turning point and the driveway leads to a detached double garage. The main gardens enjoy a southerly aspect with a full width patio leading to a level lawn and offers a high degree of seclusion.

## Location

Situated in a cul-de-sac off the Old Bisley Road, the property is within a convenient location to local amenities. Camberley and Frimley High Streets are only a short drive away offering a wealth of shops and restaurants. The property is within catchment of outstanding schools including Ravenscote and Tomlinscote School, whilst the commuter has easy access to the M3 and the A325.

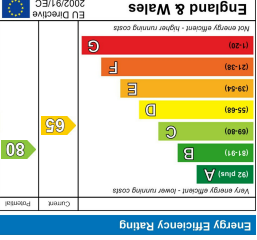
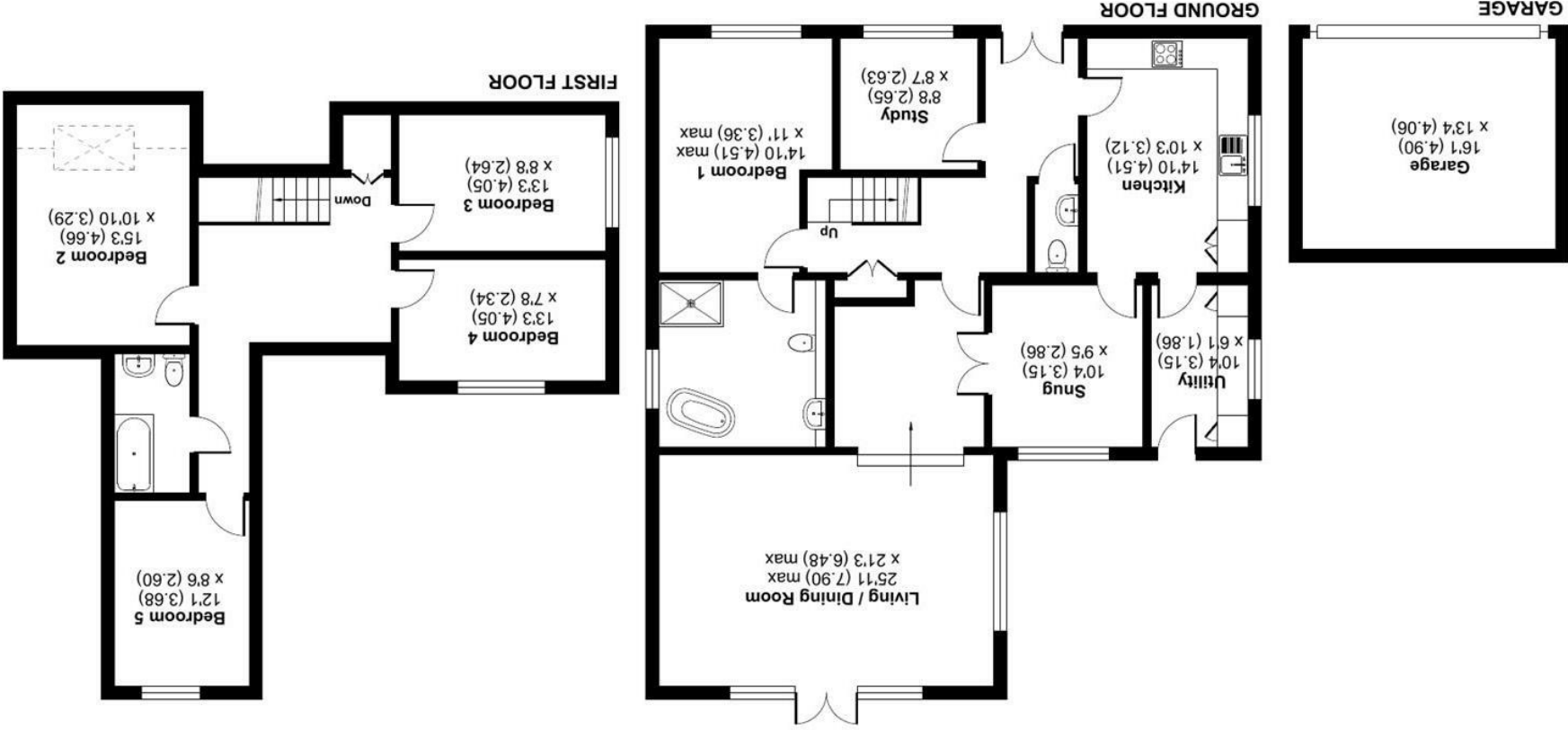


# The Ridings, Frimley, Camberley, GU16

Approximate Area = 1988 sq ft / 184.6 sq m  
Limited Use Area(s) = 31 sq ft / 2.8 sq m  
Garage = 214 sq ft / 19.8 sq m  
Total = 2233 sq ft / 207.2 sq m  
For identification only - Not to scale



Denotes restricted  
head height



27 High Street  
Camberley  
Surrey  
GU15 3RB  
01276 66566  
ey@waterfords.co.uk



Floor plan produced in accordance with RICS Property Measurement 2nd Edition, incorporating International Property Measurement Standards (IPMS2 Residential). © nichecom 2025. Produced for Waterfords. REF: 1252709