



Branksome Park Road | | Camberley | GU15 2AE

Offers In Excess Of £285,000

Share of Freehold

Waterford's W
Residential Sales & Lettings

Branksome Park Road |
Camberley | GU15 2AE
Offers In Excess Of £285,000

A stunning two-bedroom apartment located within a beautifully converted Tudor styled building just off the renowned and sought after Crawley Ridge. The apartment blends historical charm with modern living. The property offers access to communal grounds and benefits from a garage in block.

- Two bedrooms with integrated wardrobes
- Popular location
- 18ft living room with dual aspect windows
- High ceilings
- Great views
- Council Tax Band: D
- Ample loft storage
- Garage & communal parking

Description

As you step into the apartment, you are welcomed by a spacious and light-filled hallway providing central access to all accommodation, high ceilings and large windows overlooking the established communal grounds. The modern kitchen is thoughtfully designed with sleek countertops, ample cabinets and quality appliances. Adjacent to the kitchen is a dining area perfect for both casual meals and entertaining guests. The apartment boasts two generously sized bedrooms, each offering built-in storage. The master bedroom is particularly spacious, providing a comfortable area to relax and double as an office space. The second bedroom is versatile, ideal for use as a guest room, home office, or nursery. The bathroom is well appointed ensuring your comfort and convenience.



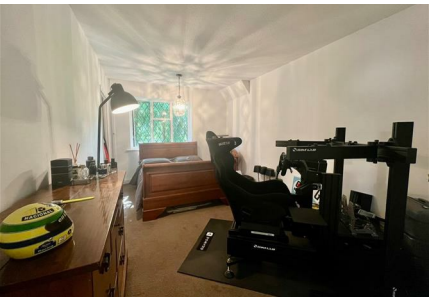


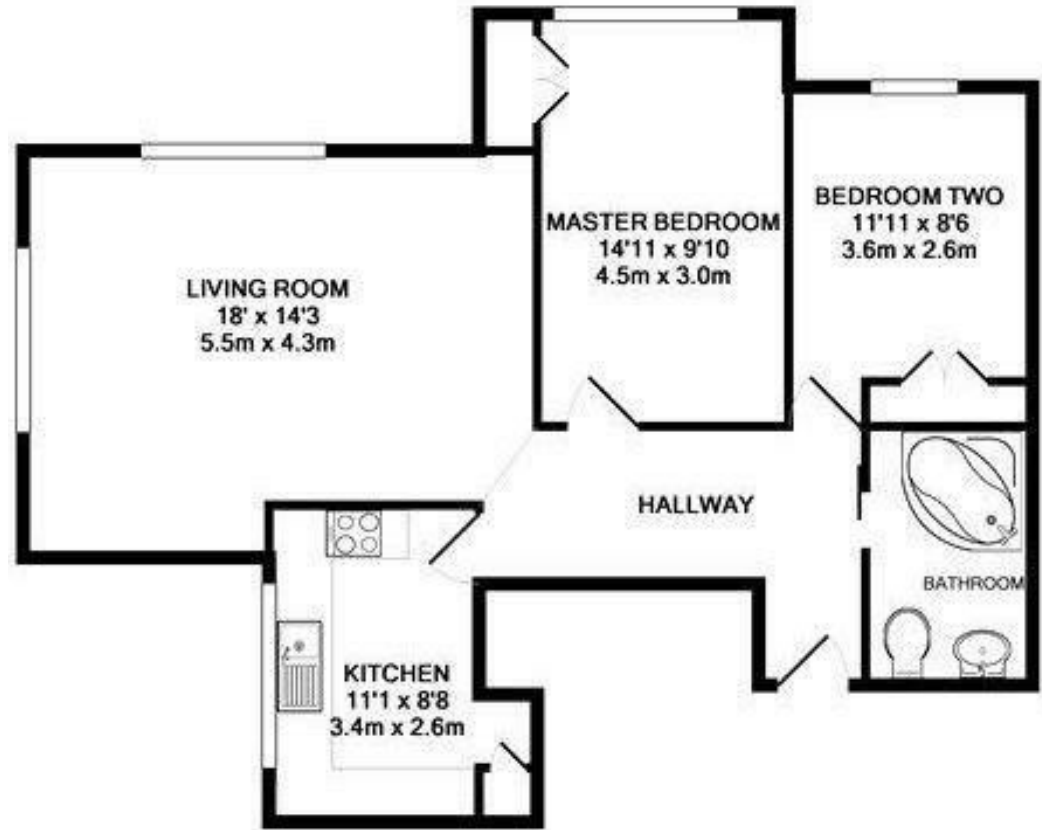
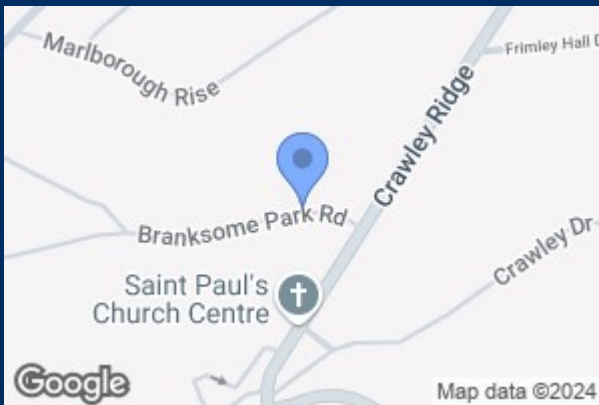
Outside

Outside, the property includes a garage in block, providing secure parking and additional storage space. The surrounding grounds are well-maintained, adding to the appeal of this exceptional home.

Location

Situated in a desirable location, this apartment offers easy access to local amenities, transport links, and the charm of the surrounding area.

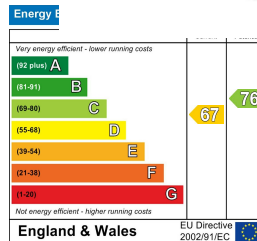




TOTAL APPROX. FLOOR AREA 702 SQ.FT. (65.3 SQ.M.)

Whilst every attempt has been made to ensure the accuracy of the floor plan contained here, measurements of doors, windows, rooms and any other items are approximate and no responsibility is taken for any error, omission, or mis-statement. This plan is for illustrative purposes only and should be used as such by any prospective purchaser. The services, systems and appliances shown have not been tested and no guarantee as to their operability or efficiency can be given.

Made with Metropix ©2016



35 Plough Road
Hampshire
GU46 7UW
01276 66566

camberley@waterfords.co.uk
<https://www.waterfords.co.uk/>