



Hillsborough Park | Camberley | Surrey | GU15 1HG

Asking Price £1,125,000 Freehold

Waterford's W
Residential Sales & Lettings

Hillsborough Park | Camberley
Surrey | GU15 1HG
Asking Price £1,125,000

Nestled within the picturesque Hillsborough Park this magnificent 5-bedroom, 5 receptions, 3-bathroom home epitomizes elegance and rural charm.

- Five Bedrooms
- Four Receptions
- Views to Golf Course
- Detached Double Garage
- Detached Family Home
- Three Bathrooms
- Modern Fitted Kitchen
- Council Tax Band: G

Outside

Externally, the property is a paradise for nature enthusiasts, mainly laid to lawn and with feature stepped gardens along with a patio area ideal for outdoor dining, and ample space for recreational activities. The property overlooks Camberley Heath Golf Course offering uninterrupted views and privacy.

The property also includes a detached double garage and private driveway parking.



Viewings highly recommended!



Location

Situated in the sought-after Hillsborough Park, residents enjoy the tranquillity of country living while being in close proximity to excellent schools, town amenities, and convenient access to major transport links.

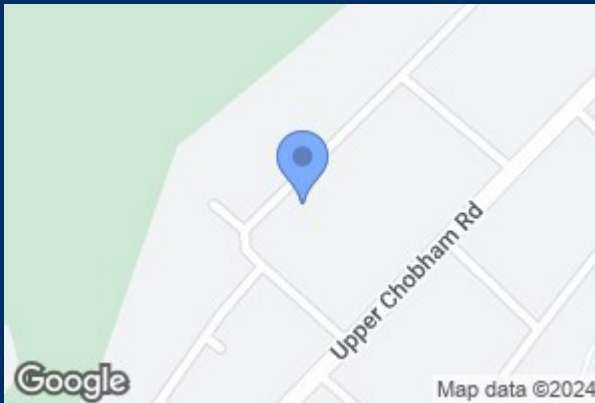
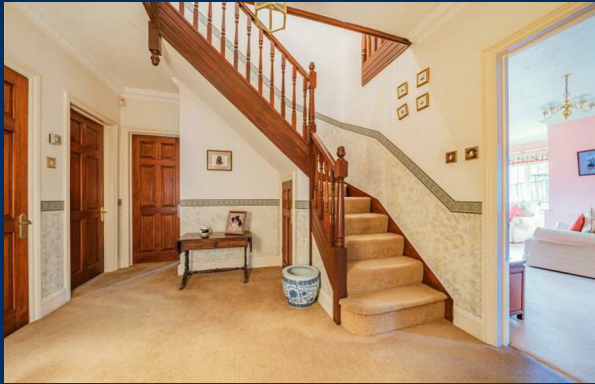
Description

As you approach the property, a private risen driveway flanked by lush gardens leads to the double garage and onto an imposing yet welcoming home.

Stepping inside, the spacious entrance hall sets the tone for the home's grandeur, with high ceilings and an abundance of natural light streaming through large windows.

The heart of this home is its well-appointed kitchen that has been tastefully modernised in recently with sleek countertops, new appliances and a breakfast area which links into the family room enjoying views over the sprawling garden and golf course beyond. To complete the ground floor accommodation there is an impressive triple aspect living room, dining room, study, and cloakroom.

The first floor boasts a large master suite with rear aspect windows offering breathtaking views onto the garden and Camberley Heath Golf Course along with a four-piece ensuite. Four additional bedrooms, thoughtfully designed and generously sized, provide flexibility for a growing family or space for hobbies and work-from-home setups.



Hillsborough Park, Camberley, Surrey, GU15

Approximate Area = 2411 sq ft / 224 sq m

Double Garage = 342 sq ft / 31.7 sq m

Total = 2753 sq ft / 255.7 sq m

For identification only - Not to scale



Floor plan produced in accordance with RICS Property Measurement Standards incorporating International Property Measurement Standards (IPMS2 Residential). © nichecom 2023. Produced for Waterfords. REF: 1061984



Energy Efficiency Rating		Current	Potential
Very energy efficient - lower running costs			
(12 plus) A			
(91-91) B			
(69-80) C		72	81
(55-68) D			
(39-54) E			
(17-38) F			
(1-20) G			
Not energy efficient - higher running costs			
England & Wales		EU Directive 2002/91/EC	

35 Plough Road
Hampshire
GU46 7UW
01276 66566

camberley@waterfords.co.uk
<https://www.waterfords.co.uk/>