



Hillsborough Park | Camberley | Surrey | GU15 1HG

Guide Price £950,000 Freehold

*Waterfords* W  
Residential Sales & Lettings

Hillsborough Park | Camberley  
Surrey | GU15 1HG  
Guide Price £950,000

New to the market is this well-presented four bedroom detached house with large garden and garage. Offering four reception rooms and two bathrooms. Don't miss out!

- Four Bedroom Detached
- Four Receptions
- Tastefully Extended
- Two Bathrooms
- Garage and Driveway
- Large Garden Parking
- Close To Local Schools
- Council Tax Band: F

## Description

Nestled in the desirable Hillsborough Park, this modern detached house presents a fantastic opportunity for a growing family.

Boasting four bedrooms, four reception rooms, and two bathrooms, this spacious property



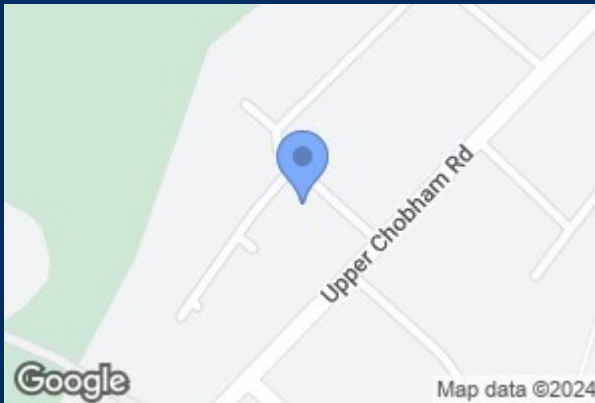
Available to view  
with Waterfords!



offers ample living space for all. The well-maintained garden provides a perfect retreat, ideal for outdoor relaxation and entertaining. A garage provides secure parking and additional storage space. The property's design and quality finishes create an inviting atmosphere throughout.

Conveniently located near popular schools such as Ravenscote and Tomlinscote which are within walking distance, along with parks, and local amenities. This home offers both comfort and convenience, so don't miss out on the chance to make this stunning property your own.

Contact us today to schedule a viewing and experience all this home has to offer.



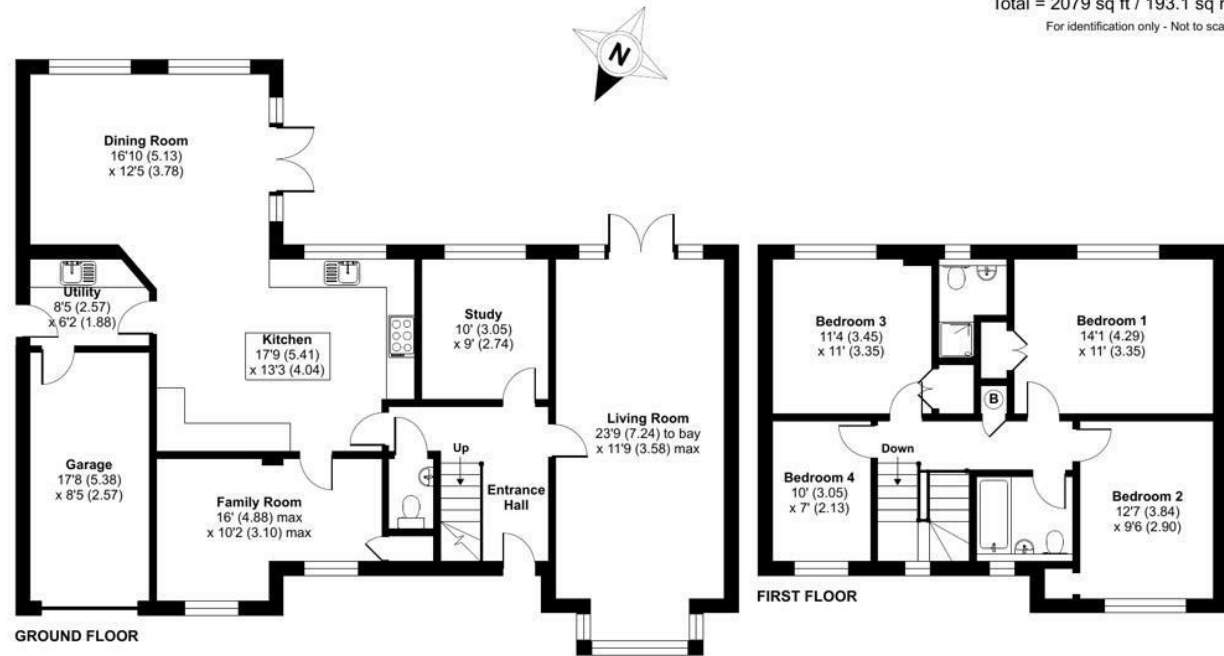
## Hillsborough Park, Surrey, GU15

Approximate Area = 1929 sq ft / 179.2 sq m

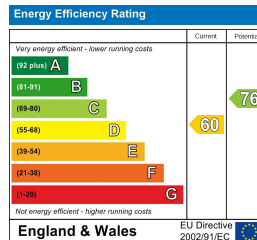
Garage = 150 sq ft / 13.9 sq m

Total = 2079 sq ft / 193.1 sq m

For identification only - Not to scale



Floor plan produced in accordance with RICS Property Measurement Standards incorporating International Property Measurement Standards (IPMS2 Residential). © nichecom 2024. Produced for Waterfords. REF: 1104228



35 Plough Road  
Hampshire  
GU46 7UW  
01276 66566

camberley@waterfords.co.uk  
<https://www.waterfords.co.uk/>