



Plot 1 - Broadstone

Hillcrest Road | Camberley | Surrey | GU15 1LG

Asking Price £1,300,000 Freehold

Waterford's
Residential Sales & Lettings

Plot 1 - Broadstone

Hillcrest Road | Camberley

Surrey | GU15 1LG

Asking Price £1,300,000

Broadstone and Ferndown are individual detached family homes located in a sought after and popular road just outside the town of Camberley.

- NEW HOMES
- OVER 2300sqft
- THREE BATHROOMS
- SOUGHT-AFTER LOCATION
- COUNCIL TAX BAND G
- HIGH SPECIFICATION
- FOUR DOUBLE BEDROOMS
- OPEN PLAN LIVING
- VIEWINGS RECOMMENDED
- 'SAP' AVAILABLE ON REQUEST

Outside

Driveway parking for multiple cars, single garage, laid to lawn rear garden with large patio and landscaped gardens to front and rear.

Description

Individually designed to a high specification with open plan living on the ground floor and



GILBER
HOMES



Bespoke and individually designed new homes in Camberley.



four double bedrooms / three bathrooms on the first floor.

Hillcrest road provides easy access to Camberley town centre and is conveniently positioned a short distance to the M3 which allows easy access into London. Local schools within close proximity include Collingwood, Prior Heath, Tomlinscote and Crawley Ridge.





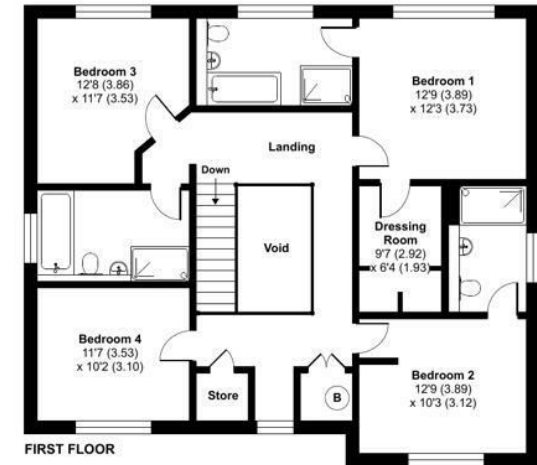
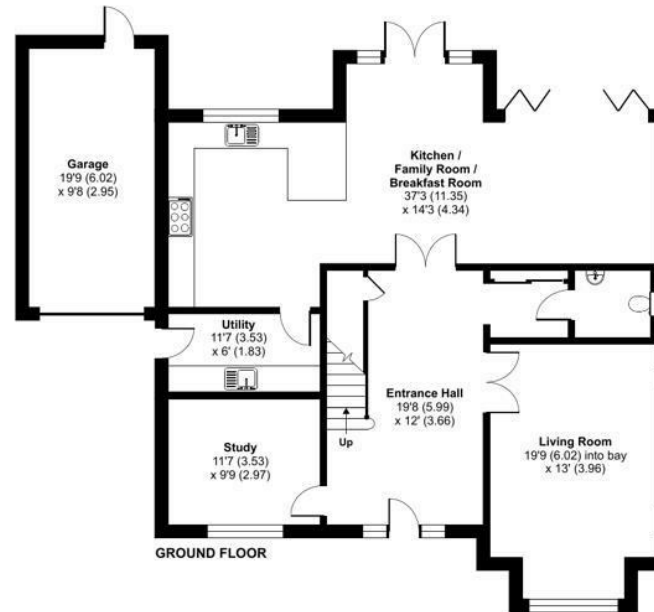
Hillcrest Road, Camberley, Surrey, GU15

Approximate Area = 2394 sq ft / 222.4 sq m (excludes void)

Garage = 192 sq ft / 17.8 sq m

Total = 2586 sq ft / 240.2 sq m

For identification only - Not to scale



Floor plan produced in accordance with RICS Property Measurement Standards incorporating International Property Measurement Standards (IPMS2 Residential). © nichecom 2024. Produced for Waterfords. REF: 1093772.



Energy Efficiency Rating		Current	Potential
Very energy efficient - lower running costs			
(12 plus) A			
(91-91) B			
(69-80) C			
(55-68) D			
(39-54) E			
(14-38) F			
(1-20) G			
Not energy efficient - higher running costs			
England & Wales	EU Directive		
	2002/91/EC		

35 Plough Road
Hampshire
GU46 7UW
01276 66566

camberley@waterfords.co.uk
<https://www.waterfords.co.uk/>