



Iberian Way | Camberley | Surrey | GU15 1LZ

Asking Price £850,000 Freehold

*Waterford's* W  
Residential Sales & Lettings

Iberian Way | Camberley  
Surrey | GU15 1LZ  
Asking Price £850,000

New to the market is this well-presented detached property which has been tastefully modernised over the years by the current owners and occupies a generous corner plot.

- Detached Home
- Three Receptions
- Large Garden
- Garage
- Four Double Bedrooms
- Corner Plot Position
- Driveway Parking for Multiple Cars
- Council Tax Band: F

## Outside

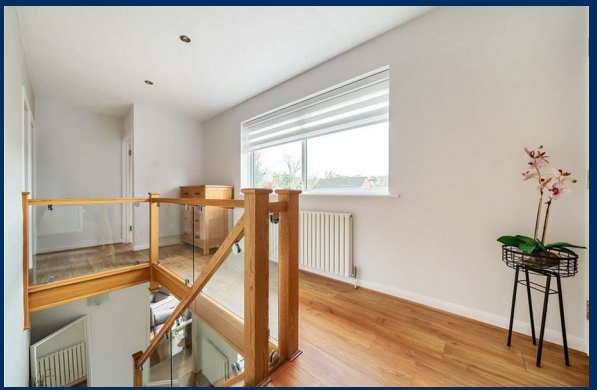
Stepping outside into the landscaped rear garden, you will find a large patio area, perfect for al fresco dining and entertaining guests. Another raised patio section hosts the large hot tub with seating and to the otherside of the plot there is lawn / patio area along with side access on both sides of the property to the front. There are shrub borders surrounding the front and rear gardens offering privacy. To



Available to view  
with Waterfords,  
Camberley.

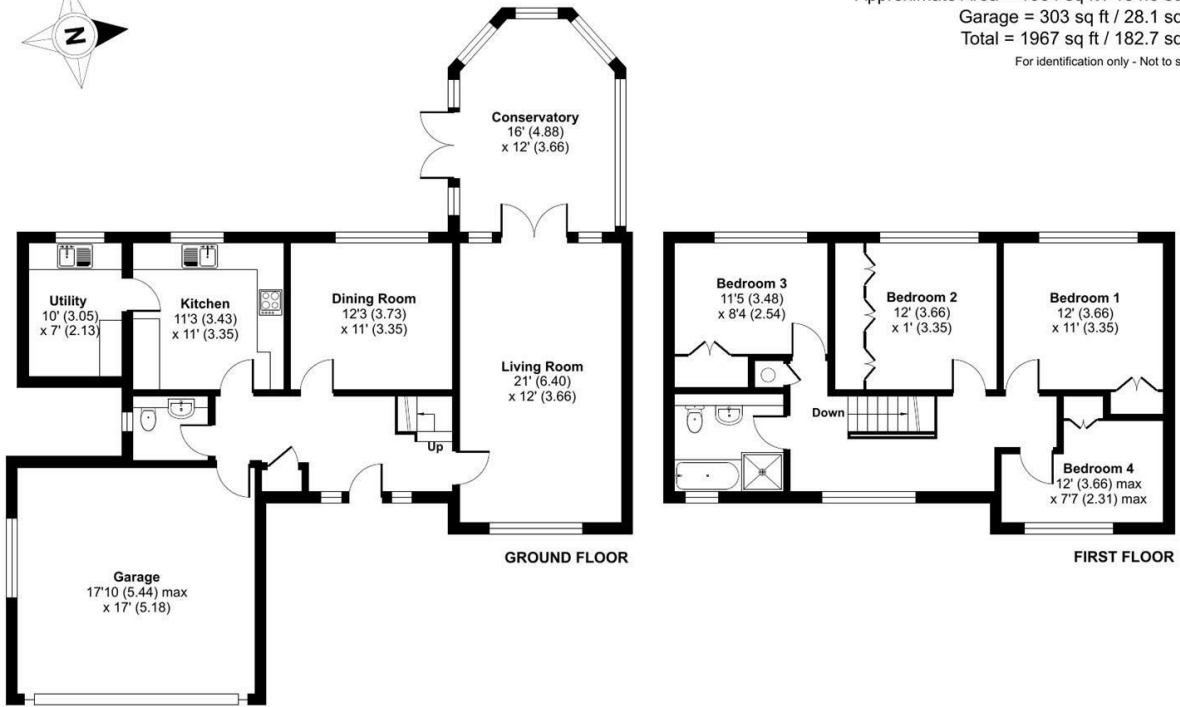


the front, there is a large driveway with ample parking for multiple cars.

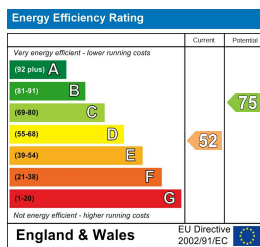


## Iberian Way, Camberley, GU15

Approximate Area = 1664 sq ft / 154.5 sq m  
 Garage = 303 sq ft / 28.1 sq m  
 Total = 1967 sq ft / 182.7 sq m  
 For identification only - Not to scale



Floor plan produced in accordance with RICS Property Measurement Standards incorporating International Property Measurement Standards (IPMS2 Residential). © richcom 2024. Produced for Waterfords. REF: 1105194



35 Plough Road  
 Hampshire  
 GU46 7UW  
 01276 66566  
 camberley@waterfords.co.uk  
<https://www.waterfords.co.uk/>