



The Courtyard | Southwell Park Road | Camberley | GU15 3AA

Asking Price £235,000

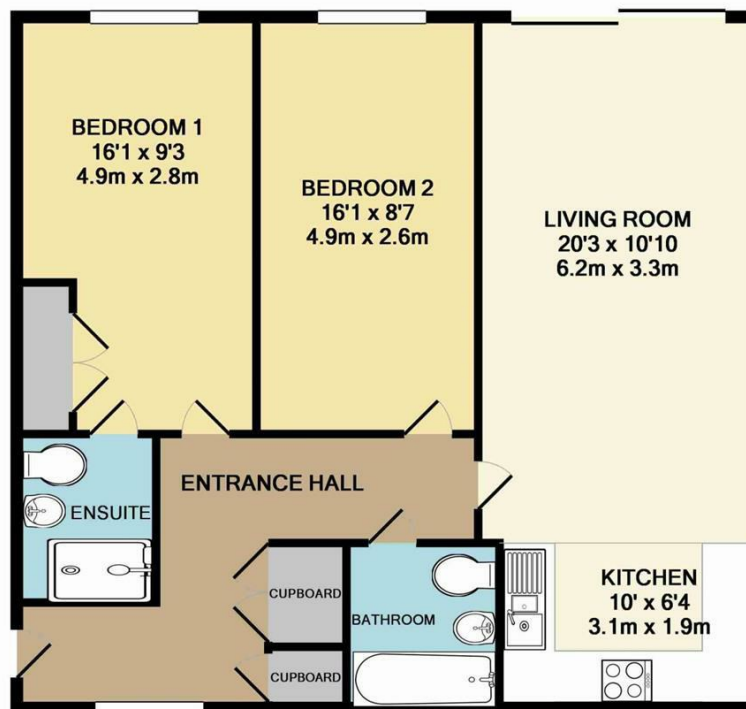
*Waterfords* W  
Residential Sales & Lettings

The Courtyard | Southwell Park  
Road  
Camberley | GU15 3AA

A superb penthouse apartment built by Crest Nicholson, located close to the town centre and within walking distance of The Atrium and Camberley Train station. There are 2 double bedrooms, 2 bathrooms, fitted kitchen, large balcony, underfloor heating throughout, underground parking and a lift.

- Penthouse Apartment
- Two Double Bedrooms
- Underground Parking
- Lift
- Fitted Kitchen
- Town Centre

Outside



Whilst every attempt has been made to ensure the accuracy of the floor plan contained here, measurements of doors, windows, rooms and any other items are approximate and no responsibility is taken for any error, omission, or mis-statement. This plan is for illustrative purposes only and should be used as such by any prospective purchaser. The services, systems and appliances shown have not been tested and no guarantee as to their operability or efficiency can be given  
Made with Metropix ©2012

| Energy Efficiency Rating                           |  | Current                    | Potential |
|--|--|----------------------------|-----------|
| <i>Very energy efficient - lower running costs</i> |  |                            |           |
| (92 plus) <b>A</b>                                 |  |                            |           |
| (81-91) <b>B</b>                                   |  | 82                         | 83        |
| (69-80) <b>C</b>                                   |  |                            |           |
| (55-68) <b>D</b>                                   |  |                            |           |
| (39-54) <b>E</b>                                   |  |                            |           |
| (21-38) <b>F</b>                                   |  |                            |           |
| (1-20) <b>G</b>                                    |  |                            |           |
| <i>Not energy efficient - higher running costs</i> |  |                            |           |
| <b>England &amp; Wales</b>                         |  | EU Directive<br>2002/91/EC |           |

35 Plough Road  
Hampshire  
GU46 7UW  
01276 66566

camberley@waterfords.co.  
<https://www.waterfords.co>