



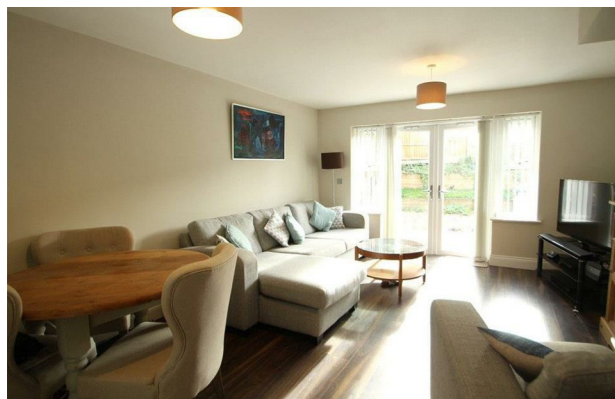
Nym Close | Camberley | Surrey | GU15 3HG

Offers In Excess Of £415,000

Waterford's W
Residential Sales & Lettings

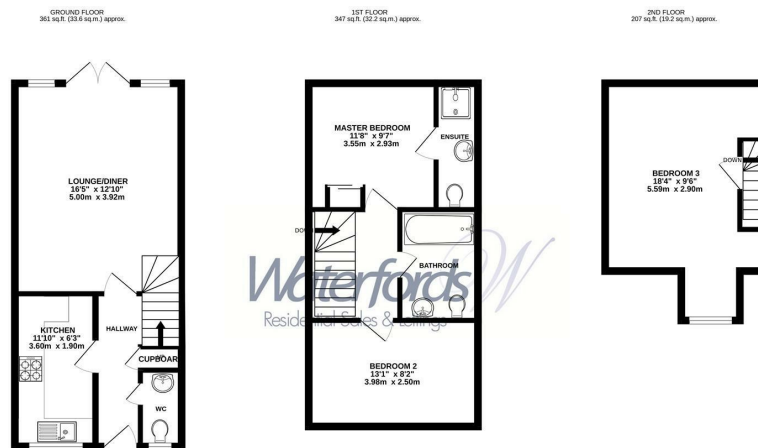
Nym Close | Camberley
Surrey | GU15 3HG
Offers In Excess Of £415,000

This wonderful three bedroom end-terraced home was only built in 2018 and is offered to the market with NO CHAIN complications.



- Walking Distance to Town Centre
- En-suite to master
- Recently Constructed
- No Onward Chain
- Three double bedrooms
- Further family bathroom
- Allocated parking space
- Council Tax Band D

Outside



TOTAL FLOOR AREA: 915 sq ft (85.0 sq.m.) approx.
Whilst every attempt has been made to ensure the accuracy of the floorplan contained here, measurements of doors, windows, floors and any other items are approximate and no responsibility is taken for any error, omission or mis-statement. This plan is for illustrative purposes only and should be used as such by any prospective purchaser. The services, systems and appliances shown have not been tested and no guarantee as to their operability or efficiency can be given.
Made with Memphis 10023

Energy Efficiency Rating		Current	Potential
Very energy efficient - lower running costs			
(92 plus) A			93
(81-91) B		81	
(69-80) C			
(55-68) D			
(39-54) E			
(21-38) F			
(1-20) G			
Not energy efficient - higher running costs			
England & Wales		EU Directive 2002/91/EC	

35 Plough Road
Hampshire
GU46 7UW
01276 66566
camberley@waterfords.co.
<https://www.waterfords.co>