

OPENING DOORS SINCE 1843

Loveitts est. 1843
THE ESTATE AGENTS



Sovereign Road, Coventry, CV5 6LU
£2,430 Per Calendar Month



Floor Plan

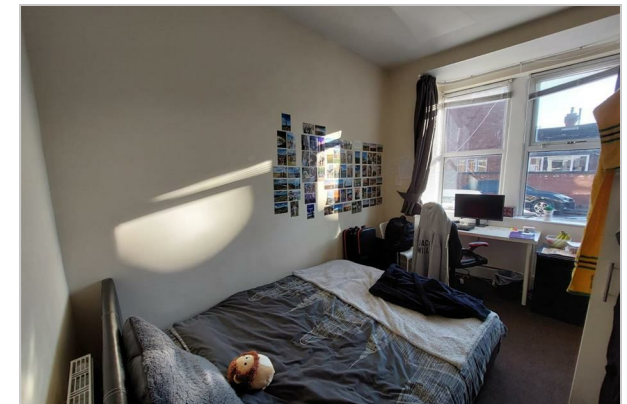
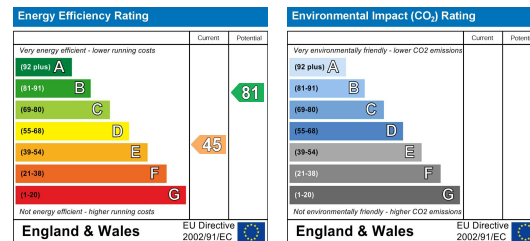


- Student Property
- Available For The Next Academic Year 2024-2025
- Fully Furnished
- Available July
- Bills Inclusive
- Walking Distance To Local Amenities
- Perfect Location For Either Coventry Or Warwick University
- Three Bathrooms
- Three Storey House
- Rear Garden

Viewing

Please contact our Coventry Lettings Office on 024 7622 8111 if you wish to arrange a viewing appointment for this property or require further information.

Energy Efficiency Graph



Area Map



These particulars, whilst believed to be accurate are set out as a general outline only for guidance and do not constitute any part of an offer or contract. Intending purchasers should not rely on them as statements of representation of fact, but must satisfy themselves by inspection or otherwise as to their accuracy. No person in this firm's employment has the authority to make or give any representation or warranty in respect of the property.