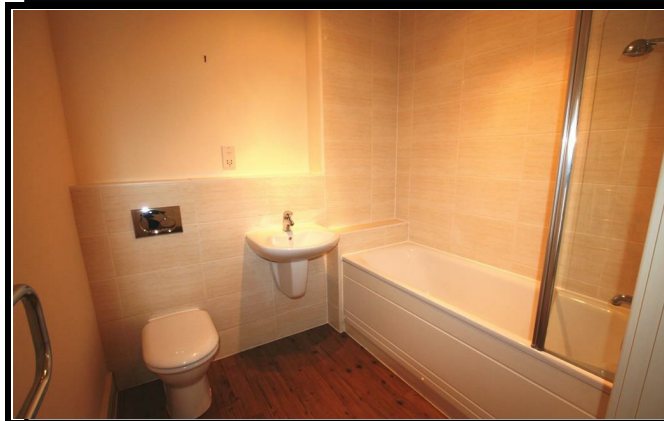
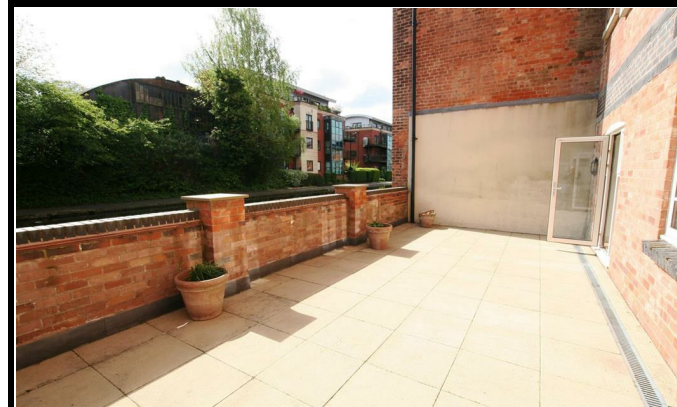


Allan Morris

estate agents

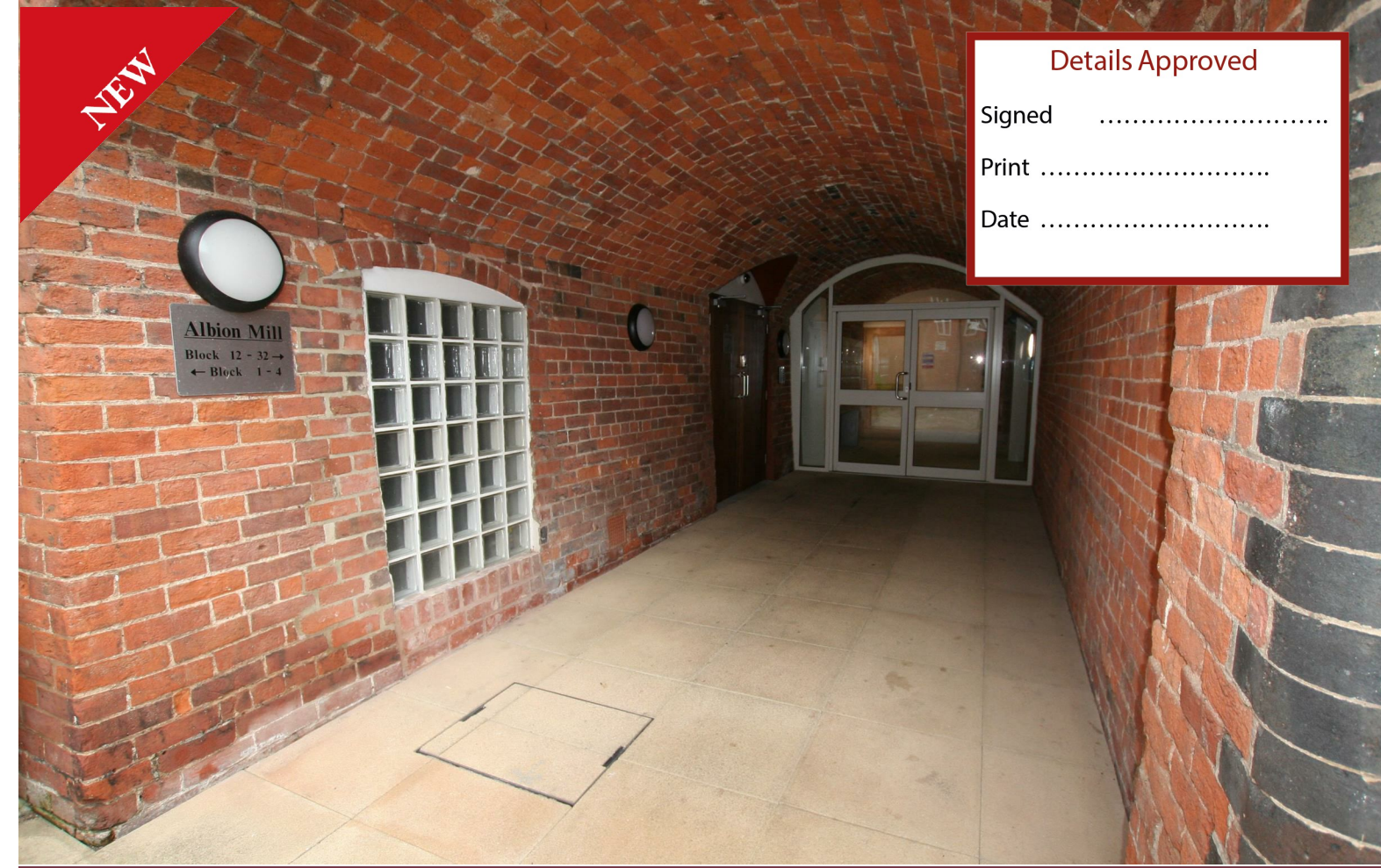


EPC graph to go here

Allan Morris Worcestershire Limited. Registered in England and Wales. Company Number 7151279
Registered Office: Sidbury House, 32 Sidbury, Worcester, WR1 2HZ

01905 612266

allan-morris.co.uk
worcester@allan-morris.co.uk



NEW

Details Approved
Signed
Print
Date

Albion Mill, Diglis, Worcester

A very well presented apartment located close to the heart of Worcester City Centre which has just been re decorated throughout and had new flooring , situated in the popular area of Diglis in Albion Mill. The accommodation is on the ground floor and faces on to the canal and comprises: communal entrance with intercom system, hallway with large utility cupboard housing the washing machine, open plan lounge and kitchen with appliances



£975 PCM

01905 612266

allan-morris.co.uk
worcester@allan-morris.co.uk



14, Albion Mill, Diglis, Worcester, WR1 2NY

All measurements are approximate. Accommodation in more detail comprises:

lounge kitchen 22'11" by 11'9"

terrace 29'6" by 14'1"

bed 1 16'0" by 9'6"

bed 2 11'5" by 7'2"



GENERAL INFORMATION

Whilst we endeavour to make our sales particulars fair, accurate and reliable, they are only a general guide to the property. Accordingly, if there is any point which is of particular importance to you please contact the office and we will be pleased to check the position for you, especially if you are travelling some distance to view the property. MEASUREMENTS: Our quoted room sizes are approximate and intended for general guidance, you are particularly advised to verify all the dimensions carefully. TENURE: We understand the property is offered for sale FREEHOLD. FIXTURES AND FITTINGS: All items not specifically mentioned within these details are to be excluded from the sale. SERVICES: Any mention of services/appliances within these details does not imply they are in full and efficient working order. We have not tested these, or any equipment in the property. Allan Morris Worcestershire will not be liable, in negligence or otherwise, for any loss arising from the use of these particulars.

ROUTE TO THE PROPERTY: