



Allan Morris
estate agents

 **MAYFAIR**
OFFICE GROUP

67 Friar Street, Worcester. WR1 2NA

£270,000

🛏️ 2 🪴 2 🛋️ 1



A stunning and most spacious Duplex Penthouse Apartment, situated in the heart of Worcester City with spectacular views of Worcester Cathedral.

Accommodation briefly comprises: Entrance Hall with useful storage cupboard, large refitted Kitchen/Dining Area and Master Bedroom with re-fitted En-Suite. On the first floor: Large open-plan Sitting/ Study Area and Guest Bedroom with refitted En-Suite.

LOCATION:

The Apartment is situated along the historic Friar Street area of Worcester, giving easy access to local amenities, such as shops, public houses and major transport links, to include Worcester Foregate Street Railway Station.

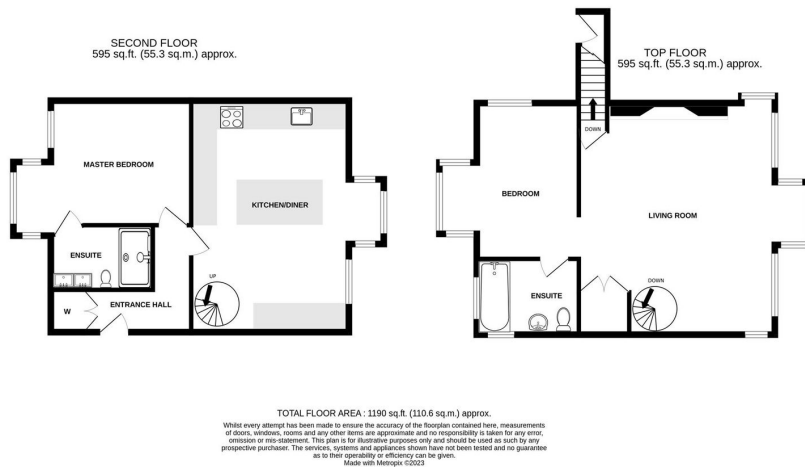
Kitchen / Diner: - 6.3m x 4.29m (20'8" x 14'1")

Bedroom 1: - 5.59m x 3.81m (18'4" into bay x 12'6" max)

Living Room: - 6.27m x 6.1m (20'7" max x 20'0" max to bay)

Guest Bedroom: - 4.06m x 2.72m (13'4" x 8'11")





- Duplex Penthouse Apartment • 2 Double En-Suite Bedrooms
- Large Open-Plan Sitting Room with feature fireplace
- Architectural character throughout
- Views over Worcester Cathedral
- Central location

