



28 Worboys Road, St. John's, Worcester. WR2 4JJ

Offers Over £400,000

🛏 4 🚿 2 🚽 2



A stunning extended four bedroom semi detached family home, situated in a popular road, within the popular St. John's area of Worcester.

Accommodation briefly comprises: Entrance Hall, Playroom, fabulous Kitchen/Breakfast Room, Living Room, Utility Room and downstairs Cloakroom. On the first floor: Master Bedroom with En-Suite Bathroom, three further Bedrooms and Family Bathroom.

Outside: To the front is generous driveway. To the rear is enclosed garden.

LOCATION:

The property is located to the West of the City in the popular St. John's area. The area benefits from a wide range of amenities and also lies within popular school catchments for both Primary and Secondary education.

Living Room: - 4.93m x 3.81m (16'2" x 12'6" max 9'1" min)

Kitchen / Breakfast Room: - 6.17m x 4.62m (20'3" x 15'2" max 14'7" min)

Playroom: - 4.27m x 2.97m (14'0" x 9'9")

Utility Room: - 3.81m x 1.83m (12'6" max x 6'0" max)

Bedroom 1: - 4.57m x 3.73m (15'0" x 12'3" max 9'4" min)

En-Suite Bathroom: - 2.59m x 1.7m (8'6" x 5'7")

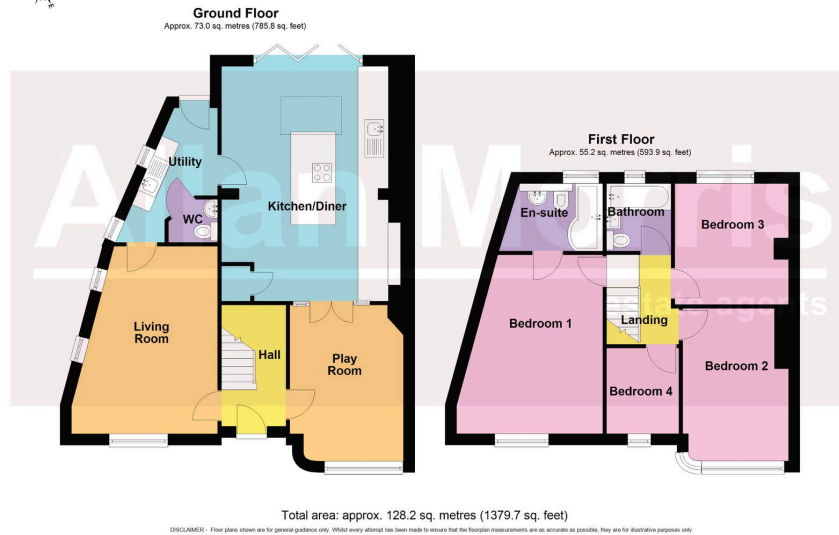
Bedroom 3: - 3.18m x 2.97m (10'5" x 9'9")

Bedroom 2: - 4.19m x 2.77m (13'9" x 9'1")

Bedroom 4: - 2.31m x 1.96m (7'7" x 6'5")

Bathroom: - 1.73m x 1.65m (5'8" x 5'5")





- Stunning extended family home
- 4 Bedrooms
- Generous driveway
- Roof garden
- Stunning Kitchen/Breakfast Room
- 2 Bathrooms
- Enclosed low maintenance rear garden
- Popular school catchment

