



Allan Morris
estate agents

 **MAYFAIR**
OFFICE GROUP

12 Raven Drive, Worcester. WR5 3LR

£495,000

4 2 1



A well presented property positioned on a corner plot with the garden providing a great degree of privacy, situated within this sought after area of St Peter's.

Accommodation briefly comprises: Entrance Hall, Living Room, Re-fitted Kitchen/Diner with Understairs Storage, Utility, WC with Cloaks Cupboard, Conservatory. On the first floor: Master Bedroom with Re-fitted Ensuite Shower-room and fitted wardrobes, 3 further Bedrooms all with fitted wardrobes and Re-fitted Family Bathroom.

Outside: Set back from a generous lawned frontage and side with Magnolia and Lilac tree, pedestrian gate from garden. Detached double garage with side door, driveway for four vehicles. The South-Easterly facing rear garden is of particular note due to it's great degree of privacy. Initially laid to patio with lawn, seating area, mature borders, Log Store, Greenhouse and Garden Shed to side.

LOCATION: The property is within easy reach of amenities, with Supermarkets, Public Houses, Schooling and Motorway access, with easy access to the City via Public Transport.

Living Room - 6.66m x 3.54m (21'10" x 11'7")

Kitchen/Diner - 6.66m x 4.34m (21'10" x 14'2")

Utility Room - 2.12m x 1.45m (6'11" x 4'9")

Conservatory - 3.64m x 2.44m (11'11" x 8'0")

Bedroom 1 - 5.15m x 4.71m (16'10" x 15'5")

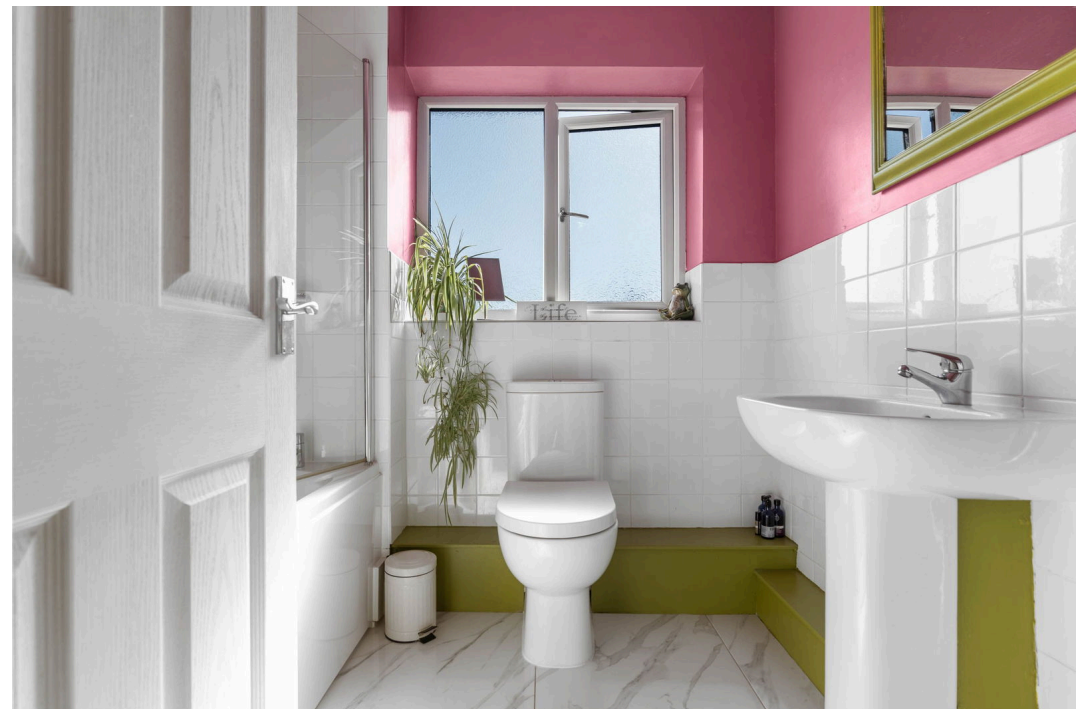
En-suite - 1.89m x 1.82m (6'2" x 5'11")

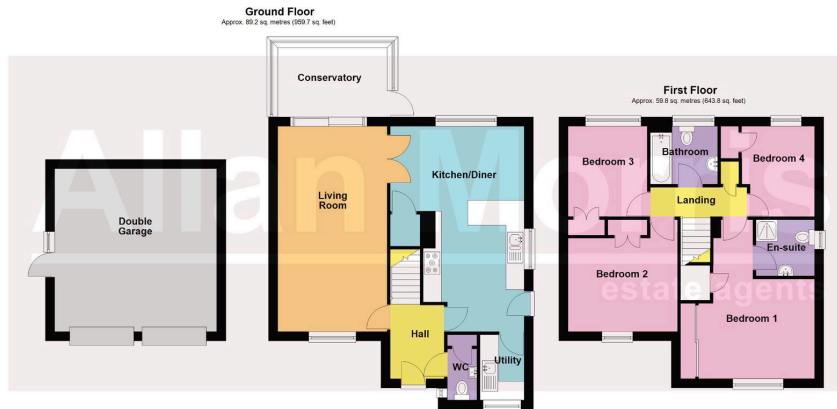
Bedroom 2 - 3.62m x 3.54m (11'10" x 11'7")

Bedroom 3 - 2.93m x 2.56m (9'7" x 8'4")

Bedroom 4 - 2.93m x 2.35m (9'7" x 7'8")

Bathroom - 2.19m x 1.88m (7'2" x 6'2")





- Popular St. Peter's location
- Private garden
- Detached double Garage
- UPVC glazing throughout
- Woodburner
- Ample off road parking
- Council Tax Band F

