



**Allan Morris**  
estate agents

 **MAYFAIR**  
OFFICE GROUP



# Apartment 28, Magdala Court, The Butts, Worcester. WR1 3PB

£160,000

🛏 2 🍳 1 🛋 1





A modern two bedroom 2nd floor Apartment, situated within Worcester City centre and benefiting from secure allocated parking space.

Accommodation briefly comprises: Entrance Hall, open-plan Lounge/Diner, Kitchen, two Bedrooms and Bathroom.

Outside: One parking space accessed via electronic gates.

#### LOCATION:

Situated in a popular area of Worcester and just a short distance to Worcester City centre's amenities, shops, restaurants and bars, as well as Worcester Racecourse.

**Lounge / Diner:** - 5.94m x 3.35m (19'6" x 11'0")

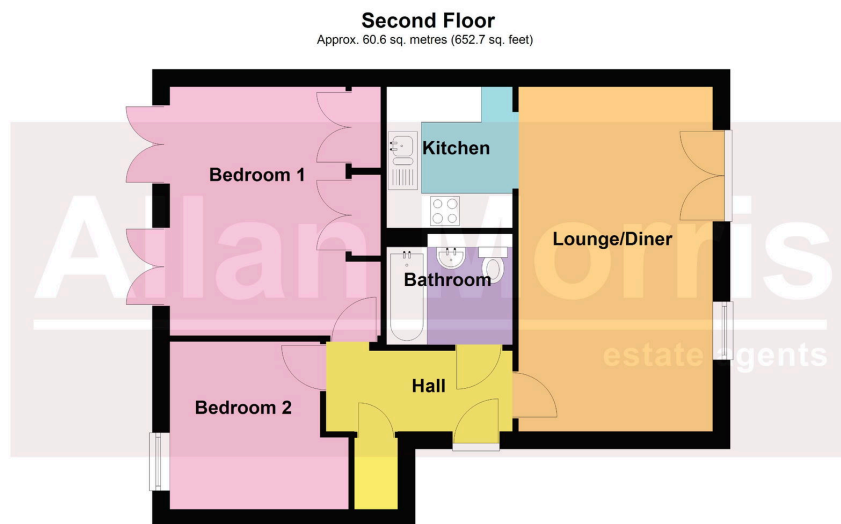
**Kitchen:** - 2.44m x 2.16m (8'0" x 7'1")

**Bedroom 1:** - 4.29m x 3.63m (14'1" x 11'11")

**Bedroom 2:** - 3.07m x 2.9m (10'1" x 9'6")

**Bathroom:** - 2.16m x 1.91m (7'1" x 6'3")





Total area: approx. 60.6 sq. metres (652.7 sq. feet)

DISCLAIMER - Floor plans shown are for general guidance only. Whilst every attempt has been made to ensure that the floorplan measurements are as accurate as possible, they are for illustrative purposes only.

- 2nd Floor Apartment
- 2 Bedrooms
- Open-plan Lounge/Diner
- Allocated parking space
- City centre location
- NO ONWARD CHAIN

